

HANWA CORPORATE PROFILE
THE FORCE OF GROWTH

Coping with changing times and markets quickly, we make a great contribution to society by satisfying various needs of customers as a “distribution specialist”

Success in today’s markets demands speed and the ability to meet a broad range of needs. Change is occurring on an unprecedented scale. Only companies that can adapt quickly will survive. Hanwa has experience and accomplishments in the field of “distribution” that span more than half a century.

We know how to build powerful businesses and move quickly in the pursuit of value creation and customer satisfaction.

Dedicated to corporate citizenship, we want our business operations to help make communities and the world a better place to live. This is why we prioritize compliance and other activities that enable us to fulfill our obligation to society.

Through such activities, Hanwa keeps nurturing a corporate culture that will enhance the value and reliability of our company. We aim to make greater contributions by fulfilling our social responsibilities.



THE FORCE OF GROWTH

President's Message

Hanwa supplies a broad spectrum of products, including steel, metals, scraps, food products, energy, life living materials, lumber, machinery and many other items, to an equally diverse range of customers.

Since our inception, we have based operations on the mission of serving our customers as “distribution specialists.” Year after year, we have used specialized skills and an extensive service network to meet customers’ needs with precisely the right solutions. This skill has made Hanwa earn a reputation as a trading company where customers know they can place their trust, in return receiving outstanding products and services.

As markets become increasingly global, companies in all industries are facing increasingly heated competition in Japan and around the world. The more rapid the pace of change, the more diverse and complex the needs of our customers become. We respond to these demands with value-added products and services, highly specialized ideas, and other forms of support. This allows us to function as each customer’s “best partner” in creating solutions for specific issues. Adhering to this approach is why we can offer trading company logistics with a difference.

The sincere advice and support of all stakeholders forms the basis for all our activities. We place great value on every customer relationship along with the accompanying opportunities. As we pursue more growth and progress, we will retain our devotion to contributing to society by performing functions that are unique to Hanwa while serving as “a trading company known for thinking from perspective users.”

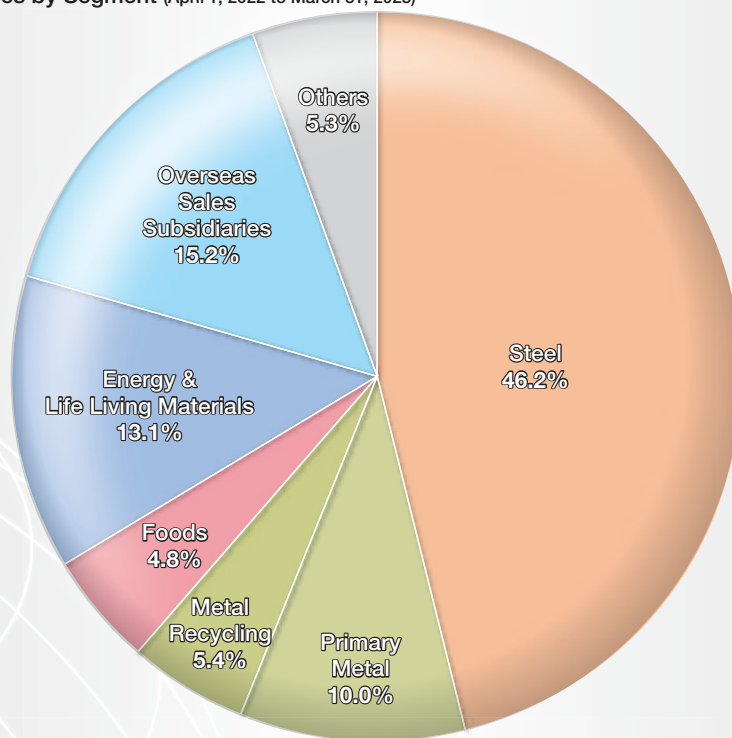


President Yoichi Nakagawa

Contents

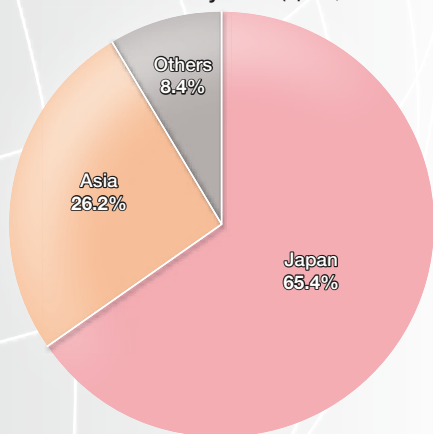
President's Message	1
Financial Highlights	3
Medium-Term Business Plan	5
Business Solution	7
Business Field	9
<hr/>	
Steel Products	11
Steel Bars /	
Steel Scrap/Semi-Finished Products /	
Construction Steel /	
Steel Construction Contracts /	
Heat Insulation Construction Contracts /	
Steel Plates /	
Building Material Steel Sheets /	
Steel Sheets / Steel Pipes / Wire Rods /	
Special Steel / Stainless Steel	
<hr/>	
Primary Metal	19
Rare Metals (Ferroalloys) /	
Precious Metals	
<hr/>	
Metal Recycling	21
Base Metal Scrap /	
Stainless Steel and High-performance	
Material Scrap	
<hr/>	
Food Products	23
Marine Products / Livestock Products	
<hr/>	
Energy & Life Living Materials	25
Industrial Energy / Recycled Energy /	
Household Goods /	
Paper Products and Used Paper /	
Synthetic Resin / Chemicals	
<hr/>	
Lumber & Plywood	29
Lumber/Plywood / Housing Materials	
<hr/>	
Machinery	31
Amusement Equipment /	
Industrial Machinery	
<hr/>	
Sustainability	33
<hr/>	
Network of Domestic Offices and	
Distribution Centers.....	37
Domestic Affiliated Companies.....	39
Network of Overseas Offices.....	41
Overseas Processing Plants.....	45
Company Profile/Company History.....	46

● Composition of Net Sales by Segment (April 1, 2022 to March 31, 2023)

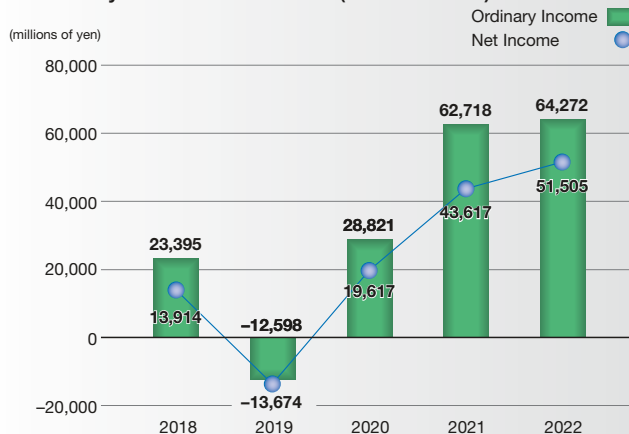


Financial Highlights

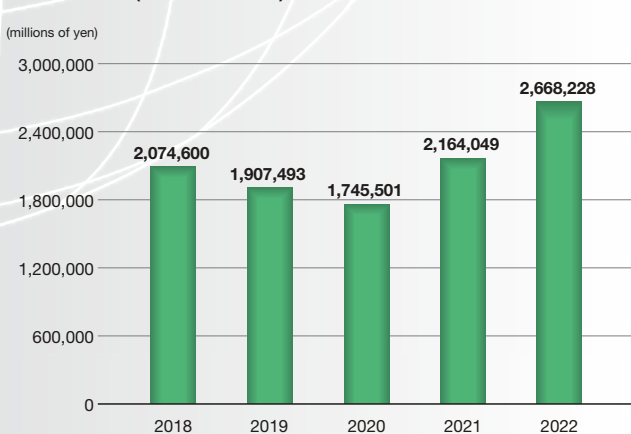
● Composition of Net Sales by Area (April 1, 2022 to March 31, 2023)



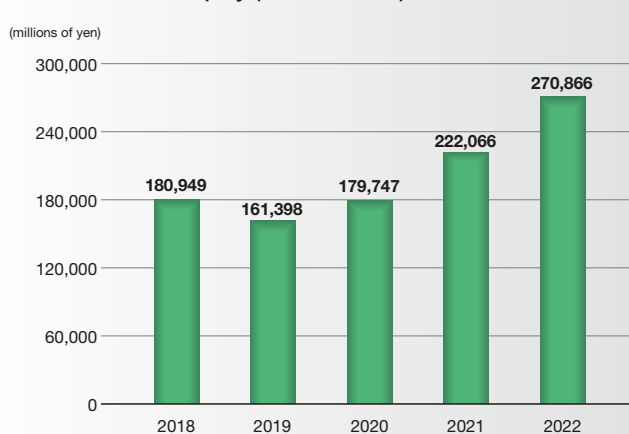
● Ordinary Income/Net Income (Consolidated)



● Net Sales (Consolidated)



● Shareholders' Equity (Consolidated)



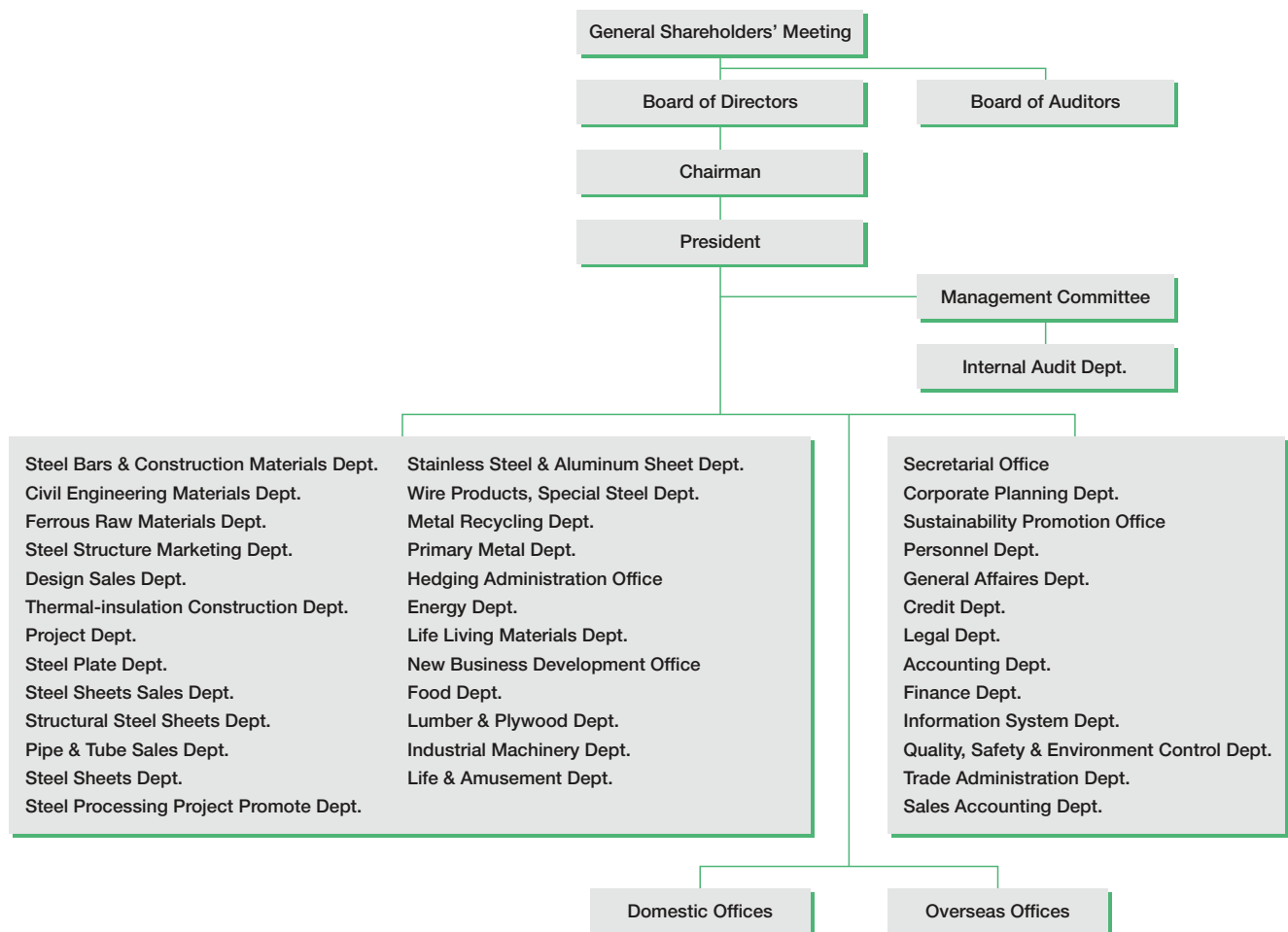
Hanwa will continue to grow as markets evolve even faster while becoming more diverse and global.

Hanwa has constantly pursued growth in its value as a company. Since our inception in 1947, Hanwa has conducted aggressive business operations based on the “management that takes the offensive” with the goal of further increasing our value as a company. The Hanwa Group has achieved steady growth in our core steel business as well as metals, scraps, food products, energy, life living materials, lumber, machinery and other businesses.

Even in an operating environment that is changing at a remarkable pace, the Hanwa Group remains dedicated to sustained growth as an organization that can accurately meet the needs of customers.

Organization

Shareholders stand at the top of the Hanwa organization. Representing the shareholders, the directors make decisions involving management policies and strategies. The board of directors is followed by a variety of business units active in many market sectors along with administrative departments. All departments work closely together with the aim of rapidly meeting customers’ increasingly varied needs. This organization facilitates collaboration and allows managers to reach decisions quickly, providing an ideal base for Hanwa’s business operations.



‘Run up to “HANWA 2030” ~Soar into the next stage challenging the status quo~’

Generate profits from investment

- Maximizing profits through business investments
- Promoting investment in raw materials for batteries and recycled resources
- Total optimization of group companies

Development of business strategy

- Strengthening of distribution function, expansion into high added-value businesses
- Evolution into solution-based business
- Expansion of local production/local consumption businesses overseas

Enhancement of management foundation

- Enhancement of financial foundations, new shareholder return policy
- Promotion/management of investment and Advanced management system
- Sophistication of risk management system
- Building an optimal governance system
- Human resources and organizations that adapt and evolve to environmental changes
- Strengthen competitiveness through DX

Sustainability management

- Management and strategies rooted in ESG and SDGs
- Strengthening of organizational structure to support sustainable growth

Medium-Term Business Plan

We aim to strengthen our long-term growth strategy and management foundation toward 2030.

The theme of the Medium-Term Business Plan

The theme of the Medium-Term Business Plan from FY2023 to FY2025 is ‘Run up to “HANWA 2030” ~Soar into the next stage challenging the status quo~’ for long-term growth until 2030. We will strengthen corporate foundation and improve medium-to long-term profitability in well-balanced manner and advance initiatives aimed at achieving sustainable growth, based on a three-story structure that comprises “Sustainability management” as basement floor, “I. Enhancement of Management Foundation” as 1st Floor, “II. Development of Business Strategy” as 2nd Floor and “III. Generate profits from” as 3rd Floor.

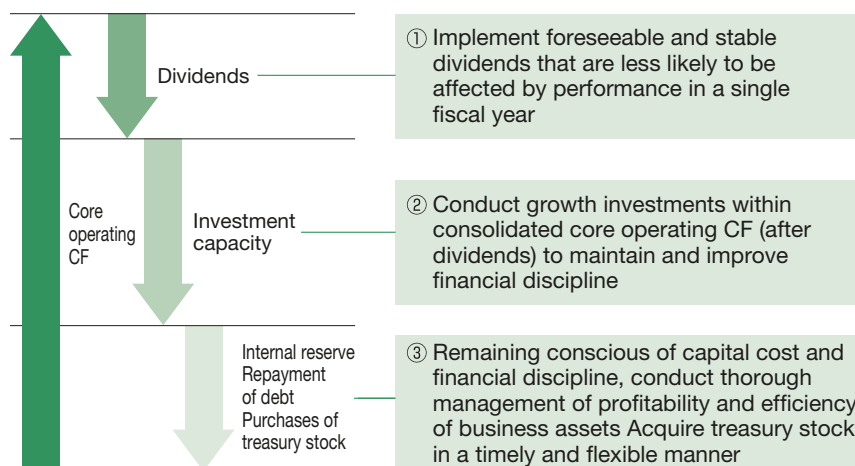
Quantitative targets of medium-term management plan

Under the current medium-term plan, we aim to achieve the following quantitative targets.

Ordinary Income (FY2025)	70 Billion yen
Return on Equity (ROE)	12.0% or more
Net DER	100% or less
Dividend on Equity (DOE)	2.5% (Minimum)
Cumulative Investment and Lending Capacity	80 Billion yen
Global Steel Transaction Volume (FY2025)	17 million tons

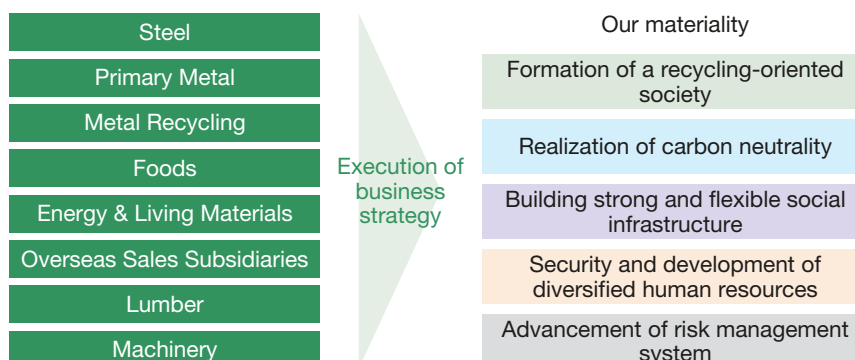
Enhancement of Financial Foundations

Be conscious of balance between “offense” and “defense” toward sustainable growth, enhance shareholder returns.



Sustainability Management

Work on material issues of the Company through implementation of individual strategies.





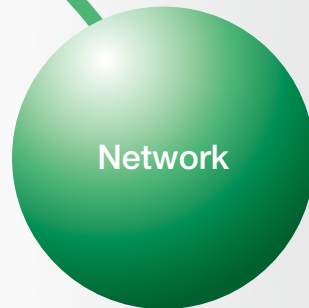
The nucleus of Hanwa's operations

In this time of rapid changes in our markets, we remain committed to our policy of always putting the customer first. By serving as "distribution specialists," we are dedicated to precisely meeting the needs of customers in order to earn their trust as "a trading company that makes a difference."



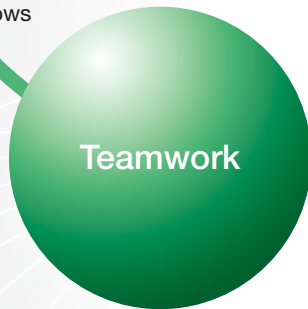
The footwork required to act with speed and agility

Hanwa firmly believes in positioning markets at the center of its operations. Front-line activities are a source of information and lessons that are available nowhere else. Speed and agility are vital to being in the right place at the right time to gather this knowledge. Recognizing the importance of spending time in the field, Hanwa business professionals use swift footwork to move from one location to another. This constant focus on the essence of business activities allows Hanwa to supply customers with solutions of the highest caliber.



The foundation for skills in information and sales

Hanwa has a powerful network that spans the globe. In Japan, Hanwa offices and distribution centers work closely together to serve customers. Overseas, we have an extensive network of offices and subsidiaries, particularly in Asia. Skills in information and sales that originate from this network are a critical component of our business operations. With these capabilities, we can meet the expectations of every customer as "distribution specialists."



A cohesive organization that thrives on teamwork

Conventional general trading companies operate by making each business a largely autonomous unit. Hanwa's operations go beyond this vertical structure. Our business operations benefit from powerful teamwork among all departments and people in our organization. All available resources are used to meet our customers' needs. Teamwork has one more important benefit: the ability to build mutually beneficial ("win-win") relationships by creating the best possible partnership with each customer.

Business Solution

“Customers first” is the core business policy of Hanwa. We are in the business of growing with our customers.

Hanwa’s trading company vision

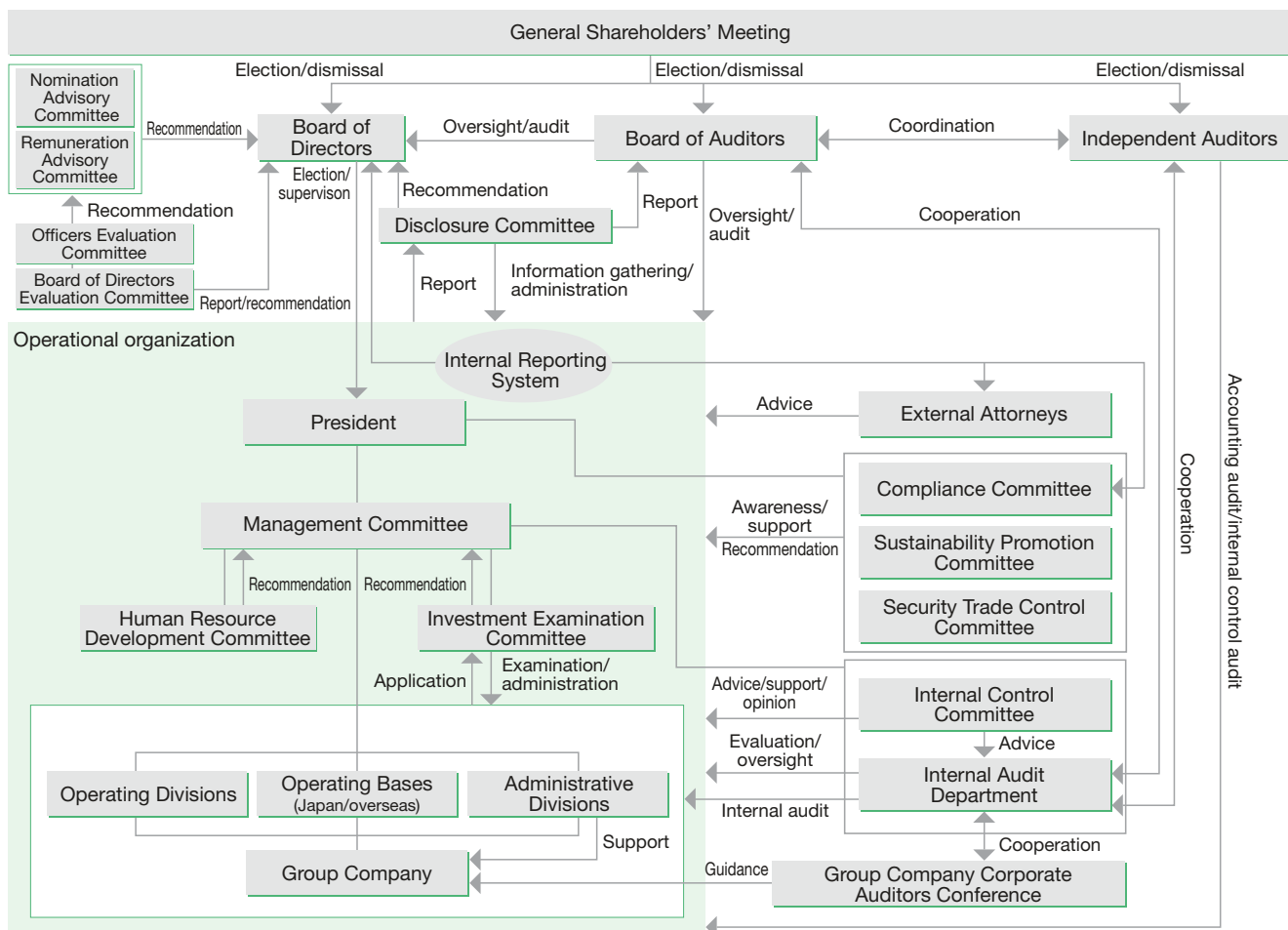
In general, trading companies use a vertically aligned organization to earn profits by serving as an intermediary for business transactions. Furthermore, trading companies invest primarily for the purpose of increasing relationships for earning these intermediary profits.

Hanwa aims to be a different type of trading company. We are dedicated to putting our customers first and prospering with our customers. This is why we use horizontal collaboration that goes far beyond conventional vertical organizational structures. Using this approach produces improvements and ideas that originate from strong partnerships between Hanwa and our customers. Only this type of trading company can function as a “true trading company” that performs a valuable role in society.

Corporate governance

“Customers first” is the core business policy of Hanwa. This is precisely why we are committed to fulfilling our social obligations as a responsible corporate citizen. Putting customers at the center of our operations requires that we earn a reputation among all stakeholders as a “company that has value.” We will maintain a highly transparent management system that complies with laws, regulations and ethical standards. In addition, we will participate in many community and charitable programs. Our goal is to use a commitment to CSR to make our corporate brand even more respected.

With these goals in mind, we place priority on establishing and operating a system of internal controls to ensure that we do business efficiently and properly.



A business field that continues to grow while expanding and deepening.

Hanwa has established a solid position in the industry as a trading company that handles a wide range of products such as steel, various metals, foods, energy, life living materials, machinery and lumber. As a “trading company with a strong presence,” we will expand our fields in response to changes in the times and society to meet the business needs of our customers.



Business Field

● **Steel Products** →11P

We sell steel bars, building materials, sheets, pipes, wires, and many other steel products. With this broad lineup, we can meet the requirements of customers in almost any industry.

● **Primary Metal** →19P

We trade precious resources such as nickel metals and ferroalloys. In combination with investment and financing functionality, we promote the expansion of “distinctive resources sources”.

● **Metal Recycling** →21P

We are one of the first to enter the recycling business of aluminum, copper, stainless steel raw materials, etc., and contribute to the effective use of resources.

● **Food Products** →23P

We handle abundant products such as shrimp and crab, and have many top share items, providing richness to Japanese home style food culture.

● **Energy & Life Living Materials** →25P

We handle energy, life living materials, synthetic resins, etc. We strive to strengthen our relationships with our customers with accurate information and prompt response.

● **Lumber & Plywood** →29P

We handle domestic and foreign lumber products and building material products and build a supply chain to housing manufacturers.

● **Machinery** →31P

We provide a variety of leisure facilities such as large amusement machines and amusement pools, as well as industrial machines such as various steel processing machines and transfer machines.

● **Sustainability** →33P

We will promote business activities that give due consideration to the environment, society, and governance, meet the expectations of stakeholders, and lead to sustainable growth.



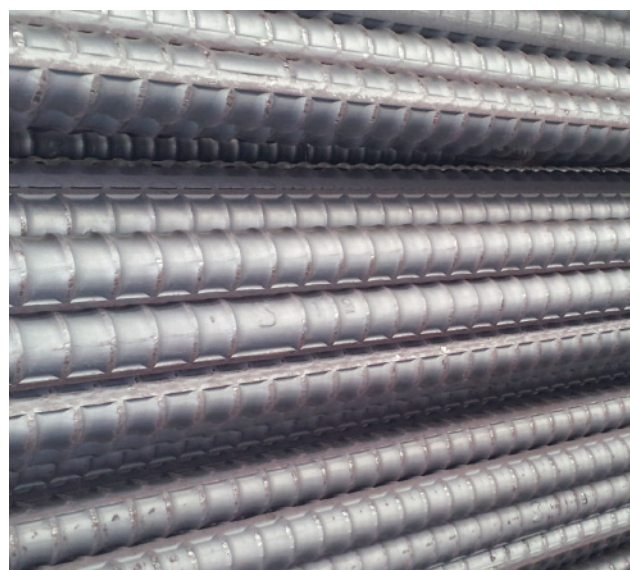
Steel Products

The steel products are our main products, accounting for about half of total sales. We sell steel bars, building materials, sheets, pipes, wires, and many other steel products. With this broad lineup, we can meet the requirements of customers in almost any industry. With some of Japan's largest steel distribution centers and a network of overseas coil centers, Hanwa ranks among the leaders in terms of inventories and steel processing volume.

Steel Bars

Deformed steel bars, a typical type of construction materials also known as reinforcing bars, are the main products that Hanwa has been focusing on since its foundation. These are recycled steel products suitable for the modern decarbonized society, using steel scraps reproduced in an electric furnace as the raw materials. In earthquake-prone Japan, they are also indispensable construction materials that support high-rise buildings and the foundation of various type of infrastructure such as highways and railways. Hanwa has built strong trusting relationships with steel manufacturers and is responsible for stable supply to general contractors and other users nationwide. We also maintain our own functions such as processing and construction, and we are engaged in proposal-based sales, including processing machines as well as peripheral products that meet both the optimization and energy-saving needs of the times by utilizing the cultivated know-how. Through these efforts, Hanwa will continue to meet market expectations in order to implement safe and rational plans for users.

- **Main products:** Deformed steel bars, threaded reinforcing bars, mechanical joints, high-strength shear reinforcement, epoxy-coated reinforcing bars, reinforcing bar processing machines.
- **Department:** Steel Bars and Construction Materials Department-1



Steel Scrap/Semi-Finished Products

In Japan, which has limited natural resources, steel scrap is ranked as an important steel raw material. There are many so-called emerging countries around Japan that consume steel scrap. Japan's international role as an exporter in Asia is extremely important, and the steel-making raw material business plays a central role in Hanwa's recycling business. Also, we handle semi-finished products such as billets and slabs, including domestic electric furnace products and products from overseas manufacturers, and we supply semi-finished products suitable for applications by re-roll manufacturers.

- **Main products:** Steel scrap, pig iron, billet, slabs, second-hand steel materials, all types of dismantlement materials.
- **Department:** Ferrous Raw Materials Department

Highlight Reinforcing Bar Processing

Hanwa does not only work as a trading company, but also undertakes reinforcing bar processing and construction operations. Our business scale is one of the highest in Japan. Especially in the Kanto area, we have the wholly-owned Tohan Steel Co., Ltd. (processing capacity 12,000 t/month, on-site construction capacity 5,000 t/month), and we are building a system that can support users at every stage from diagram creation to factory processing and on-site construction. The company has set up a new factory with the aim of making it an energy-saving smart factory and is actively working to support Japanese users in expanding overseas.



● Construction Steel

A construction business that is indispensable for infrastructure development that supports society. Although a huge amount of steel is used in the construction and civil engineering business, we boast high position in the industry in terms of the domestic handling volume of H-beams, which is the most representative steel material. In addition to setting up large distribution bases in major cities nationwide, major urban distributors such as Sanei Metals and Daisun have joined the group companies. As a result, it demonstrates functions that match the needs of users, such as mass inventory, small-lot immediate delivery, and processing, and has an overwhelming presence with a unique business model that differentiates it from other trading companies. Furthermore, in recent years, while overseas strategies are being emphasized in the construction field, which is a representative of domestic demand, our know-how and outstanding functions cultivated in domestic transactions have received high praise in overseas markets, and efforts for overseas projects are rapidly expanding.

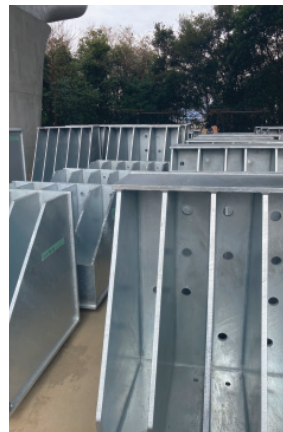
- **Main products:** H-beams, columns, angles, channels, flat bar, sheet piling, steel pipe pile, segments, carbon fiber sheets, cements, and other general products for construction and civil engineering
- **Departments:** Steel Bars and Construction Materials Department-2, Civil Engineering Materials Department



Highlight

Material for Civil Engineering

In the civil engineering field, in addition to providing civil engineering products used in public and private civil engineering work, foundations used for construction work, and materials for underground structures. In recently we also focus on the sales of steel structures, cement, ready-mix concrete, improved materials, carbon fibers and other products in the field of maintenance and renewal work of deteriorating infrastructural equipment and seismic reinforcement. We also respond to the processing needs for steel structures that occur at each construction site.



Steel Construction Contracts

Leveraging our strong steel procurement ability, we cooperate with over 100 fabricators (roofing and wall processing companies) all over Japan to carry out contracted construction for our clients, general contractors. To meet the needs of our clients and affiliated companies, we focus on enhancing our contract fulfillment framework. Through cooperation with our 100% subsidiary on-site constructor, SK Engineering Co., Ltd. and a steel engineering company Fellows Co., Ltd., we promote structural steel business, utilizing our unique functionality.

● **Department:** Steel Structure Marketing Department



Highlight

Exterior and interior construction business

Design Sales Dept also focuses on the exterior and interior construction business. For roofing work, we use our own products such as Sure Roof and metal folded plates. For exterior wall work, we use metal sandwich panels and metal siding. For interior work, we handle fireproof insulation partition walls. In particular, Sure Roof uses dry membrane construction method, and by fixing an ethylene propylene rubber sheet on top of the originally developed Sure Deck together with heat insulating materials, it is possible to realize a lightweight, highly durable waterproof and heat-insulated roof. Design Sales Dept. built a construction system that is consist with architectural design work.



Heat Insulation Construction Contracts

We provide an integrated sales, design and construction system, incorporating our “know-how cultivated over many years,” in our heat insulation work for refrigerated and frozen warehouses, fixed-temperature warehouses, distribution centers, food processing plants. That require temperature control. We provide not only heat insulation work, but also complete sets of work other than framework, such as peripheral interior design, fittings, and exterior construction work. We will continue to build the trust of our business partners such as warehouse companies, fisheries, architects and general contractors as a “top-share” company for heat insulation work.

● **Department:** Thermal-insulation Construction Department



Highlight

Project Sales & New business development

Project Dept utilizes its own real estate transaction network and know-how in steel frame building contract work to make optimal proposals for customers' CRE strategies and deepen the relationship of trust between us and customers. In addition, we carry out upstream sales in the construction field and connect it to sales support for each construction material division. We are researching new businesses and new products, aiming to build businesses in new fields that will become the pillars of our future management.



● Steel Plates

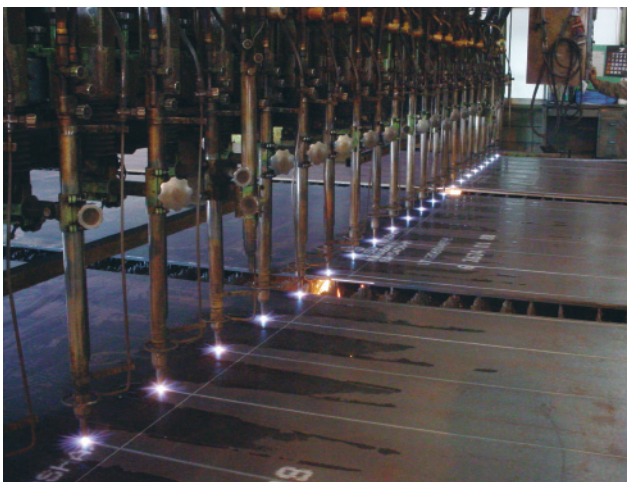
We handle steel plates used in a wide range of fields, including manufacturing fields such as shipbuilding, construction and industrial machinery, and construction fields such as architecture, bridges, and civil engineering. In addition to selling steel plates procured from domestic and overseas steel manufacturers as base material, we are actively developing processed products with increased added value through cutting, bending, welding, drilling, shot processing, etc. We are working with a comprehensive ensemble including the processing system of the base material to enhance the functionality of the steel plate business. Demand for steel plates is wide-ranging, including shipbuilding, construction machinery, construction, and bridges, as well as line pipes and wind power generation in the energy field. Hanwa aims to be a coordinator that enhances information-gathering capabilities, sensitively reads changes in the times, and accurately responds to customer needs.

- **Main products:** Hot-rolled steel sheets, pickled steel sheets, all kinds of slit coils, eared steel plates, manufacturer sketches, specified lengths, laying iron plates, cut plates, BH, pressed columns, shot processing, and other medium steel plate processed products
- **Departments:** Steel Plates Department, Steel Sheets Sales Department

● Building Material Steel Sheets

The construction industry is the core industry of the domestic steel sheet market, and we handle a wide range of products based on steel sheet products in that market. For example, in the case of housing and housing equipment, we handle aggregates, materials, hardware, roof and wall materials for prefabricated houses, wooden houses, temporary houses, storerooms, stores and factories and in the case of civil engineering, road materials, fences, windbreaks, slope reinforcement methods and molds. In logistics equipment sales. We supply packaging pallets to various industries not only in Japan but also in a wide range of regions such as ASEAN and North America. We are also promoting the expansion and deepening of transactions, such as the development of niche markets and new markets one step further, and production bases in Asia.

- **Main products:** Hot-rolled steel sheets, pickled steel sheets, surface-treated steel sheets, colored steel sheets, laminated steel sheets, highly corrosion-resistant plated steel sheets, light-weight ceiling material, interior and exterior panels, slope reinforcing material, distribution pallets, expanded metal
- **Departments:** Structural Steel Sheets Department, Pipe and Tube Sales Department



Steel Sheets

We do business in a wide range of industries such as electrical manufacturers, OA equipment manufacturers, automobile parts manufacturers, overseas steel manufacturers and distributors. In recent years, many steel sheet consumers have set up production bases overseas, accelerating global expansion in both production and sales. We have organized a sales division that integrates domestic and overseas operations and have responded to these customer trends from early on. In order to ensure a stable supply of steel products, we have established a steel sheet supply system with a coil center, which is a steel sheet processing base, mainly for overseas factories of Japanese manufacturers, and recently, we are expanding transactions with local traders. In Japan as well, in addition to Hanwa Steel Services in Shiga Prefecture, we collaborate with many processors to provide fine-tuned services.

- **Main products:** General steel sheets (hot-rolled, pickled, cold-rolled, hot-dipped plating, electroplating, highly corrosion-resistant plating, etc.), colored steel sheets, stainless steel sheets, special steel sheets, electromagnetic steel sheets, steel sheet processed products
- **Department:** Steel Sheets Department



Highlight Steel Sheet Processing

In addition to slit and leveler processing, Hanwa Steel Services also works in the field of secondary processing of steel sheets such as the blanking press business. Other Group companies are also actively responding to downstream fields by strengthening processing functions that meet the needs of automobile, home appliances, and industrial and construction machinery manufacturers, such as bending, cutting, and stamping of steel sheets.



● Steel Pipes

Steel pipes made by molding steel into the shapes of pipes are lightweight and strong, so they are used for various purposes such as construction and civil engineering of things like piles for residential use, scaffolding, and mechanical parts, and for gas and water piping. In addition to handling a wide range of products from base materials for electric welded pipe manufacturing to steel pipe processed products, we also sell and contract processing of products that use steel pipes such as packaging materials and pallets. We also export special pipes and oil well pipes to overseas plants.

- **Main products:** Steel pipes for general structures, carbon steel pipes for general structures, steel pipes for plumbing, pipes for agricultural plastic greenhouses, steel pipes for machine structures
- **Departments:** Pipe and Tube Sales Department, Steel Plates Department



● Wire Rods

In addition to handling ordinary wire rods used as raw materials for wires, screws, bolts, etc., and special wire rods used for automobile parts such as tire cords and springs, we also handle processed products that need to be cut and rolled to user needs. We utilize our connections with domestic and overseas wire rod manufacturers to provide optimal wire rods for domestic and overseas users. We also handle secondary wire rod products such as wire mesh made from the wire rods we supply.

- **Main products:** Ordinary steel wire rods, deformed bar-in coils, hard steel wire rods, special steel wire rods, stainless steel wire rods, secondary and tertiary wire rod products
- **Departments:** Wire Products, Special Steel and Titanium Department, Wire Products Special Steel Department



Special Steel

Adding and blending various elements in the steel-making process makes it possible to manufacture a special type of steel with various capabilities. We handle various types of special steel which is developed and manufactured for specific purposes such as structural steel used for various types of machinery or automobile components, tool steel used in the tools for processing steel and other materials, spring steel, heat-resistant steel, high-tension steel and high-speed steel. We also sell processed products that have been manufactured by cutting, bending, and/or heat-treating special steel.

- **Main products:** Carbon steel for machine structures, alloy steel for machine structures, free-cutting steel, bearing steel, tool steel, titanium, high nickel alloys, cold-finished steel bars, forged products, aluminum wire rods, steel bars
- **Departments:** Wire Products, Special Steel and Titanium Department, Wire Products and Special Steel Department



Stainless Steel

Stainless steel is a highly functional steel product with excellent durability, corrosion resistance, and aesthetics, and is used in a wide variety of fields such as building construction, industrial equipment, electrical equipment, household equipment, automobiles, ships, and railroad vehicles. We have built close relationships with domestic and overseas stainless-steel manufacturers and we use wide network and proposal skills to supply various fields where stainless-steel products such as stainless hot-rolled, cold-rolled steel sheets, shaped steel and pipes are demanded.

- **Main products:** Stainless cold-rolled steel sheets/coils, stainless hot-rolled steel sheets/coils, stainless steel foils, stainless steel thick plates, stainless steel pipes, stainless steel angles, stainless steel round bars, stainless steel forming products
- **Departments:** Stainless Steel and Aluminum Sheet Department, Structural Steel Sheets Department, Primary Metal Department-2



Highlight Aluminum Products

Aluminum is lightweight, corrosion resistant, thermal conductive and recyclable. In recent years, in society where SDGs initiatives are emphasized, aluminum is attracting more attention from the perspective of environmental conservation. Stainless Steel and Aluminum Sheet Department at Osaka office is actively responding to customer needs by expanding the range of products we handle, including aluminum plates, extruded shapes, and processed products.





Primary Metal

We trade precious resources such as nickel metals, ferroalloys of chromium, silicon and manganese. We are directly sourcing from producers in Russia, South Africa, Kazakhstan, India, Malaysia, Indonesia, Mexico and other countries, especially from producers of China, where both supply and demand are immense. In combination with investment and financing functionality, we promote the expansion of “distinctive resources sources”. We are also expanding the handling of battery metals such as lithium and nickel compounds for secondary batteries for EVs.

● Rare Metals (Ferroalloys)

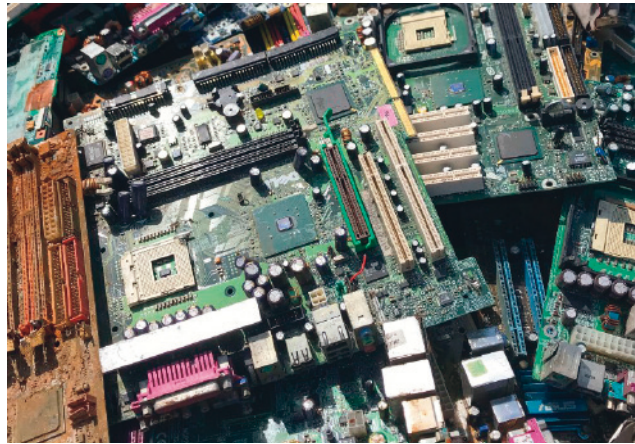
We provide a stable supply of metal resources such as nickel, chromium, and manganese that are unevenly distributed in some regions, not only to consumers in Japan but also to consumers around the world, and also deliver high-value-added products manufactured in those regions to downstream customers. We directly deal with groups of companies called resource majors in places such as Indonesia, South Africa, India, Australia and Malaysia, build a two-way business system for stable raw material supply and product purchases, and promote consistent business development from upstream to downstream. Recently, including investment in upstream manufacturers, we are expanding the handling of metals for batteries such as lithium, nickel, cobalt, and graphite, for which applications for secondary batteries of electric vehicles are expanding.

- **Main products:** Ores, ferroalloys and compounds of nickel, chromium, manganese, silicon, etc., lithium compounds, nickel pig iron, stainless steel products, and chemical raw materials such as nickel, cobalt and manganese
- **Departments:** Primary Metal Department-1 and 2



Precious Metals

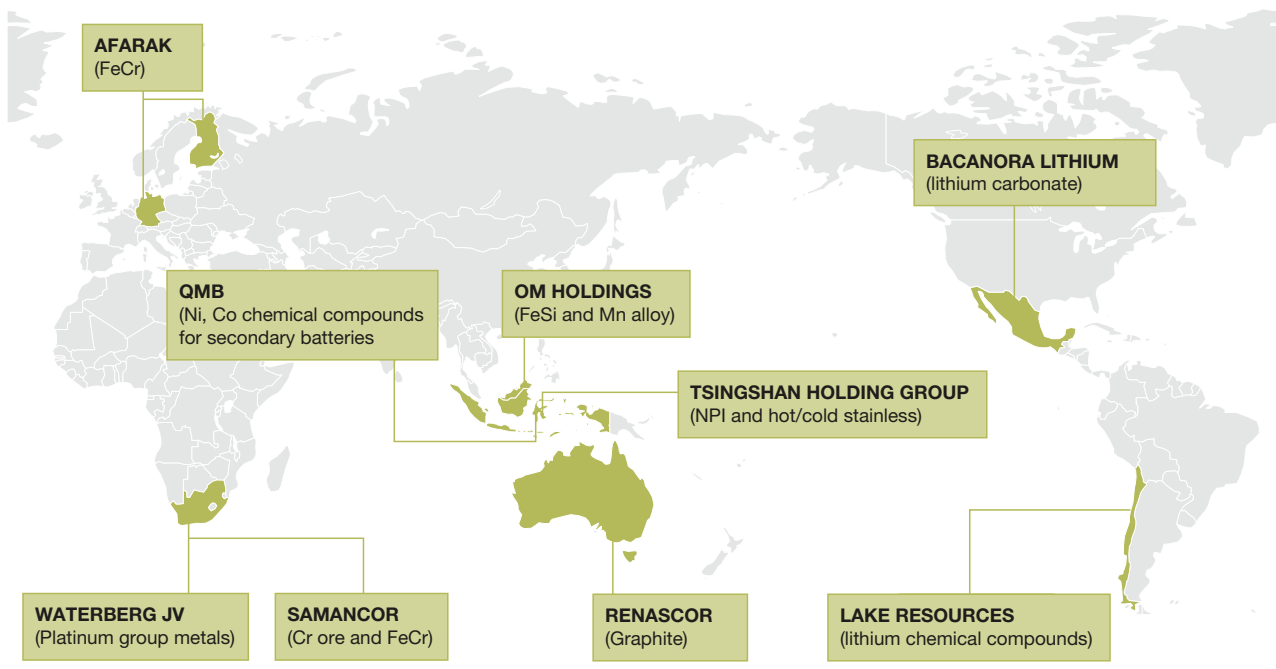
We also handle precious metal-based recycled metals (including bullion) from so-called urban mines such as used electric products, PCs, OA equipment, and precious metals, vanadium and rare-earth elements in chemical fields such as automobile catalysts and magnets that require various raw materials. In addition, as users are not limited to Japan, and the volume of transactions overseas continues to expand, we collect e-scrap from countries around the world that have accumulated waste home appliances, utilize the local inventory and sorting functions, and are responsible for both purchasing raw materials and simultaneously ensuring a stable supply all over the world.



- **Main products:** Ores or chemical raw materials such as palladium, platinum, rhodium, (urban mining recycled raw materials or e-scrap containing these precious metals), vanadium, silicon and rare-earth elements
- **Department:** Primary Metal Department-1

Highlight Global Procurement Strategy

In order to stably procure and supply metal resources to domestic and overseas business partners, we are expanding procurement sources by investing in overseas metal mines and refining manufacturers and through business alliances with them. In recent years, we have been enhancing our procurement sources of raw materials for batteries such as nickel, lithium, and graphite in order to support the expanded demand for secondary batteries due to the popularization of electric vehicles.





Metal Recycling

Hanwa is one of the first to enter the non-ferrous metals and specialty metals recycling business. Operations involve mainly aluminum, copper, zinc, lead, stainless steel and other metals where demand is substantial in Japan. We have solid positions in these markets, backed by expertise in organizing business on a global scale. In our recycling business of aluminum cans, we fully utilize expertise in collection, inventory and supply activities to aluminum rolling plants. We actively promote installation of new facilities and expansion of our base locations.

● Base Metal Scrap

We have been in the aluminum and copper recycling business since the 1950s, and we supply scrap as an alternative raw material and high-quality raw material to non-ferrous metal related users both within Japan and overseas and have been focusing on preserving the global environment occurred by promoting recycling. In addition, our Group owns processing equipment and recycles aluminum cans, aluminum sashes, etc., and has established a system to meet the needs of consumers. We also handle white metals, such as lead, which is the main raw material for batteries used in automobiles and other vehicles, and tin, a raw material for solder, which is indispensable for electronic components. We trade by-products and secondary raw materials generated by various non-ferrous producers with domestic and foreign manufacturers through appropriate procedures including the Basel Convention.

- **Main products:** Copper, aluminum scrap zinc, lead, tin metal and scrap
- **Departments:** Metal Recycling Department-1 and 2

Highlight

Overseas Recycling

We operate a copper recycling joint venture in Indonesia with the Indoprime Group, a local conglomerate. We have established our own base in Indonesia, where the recycling environment is still developing, and provide the same level of service as in Japan. Also, in Thailand, our Group companies collect aluminum and copper scrap, sort and process it, and supply it to Japanese and local secondary refiners.



Stainless Steel and High-performance Material Scrap

We are working to recycle stainless steel, special steel, titanium, heat-resistant alloys, etc. We focus on recycling scrap containing elements such as nickel, chromium, molybdenum, cobalt, tungsten, and titanium, by handling from stainless steel, which is a familiar part of our daily lives, to titanium alloys and heat-resistant alloys used in the aerospace industry. In addition to trading, we add value by developing our own collection, sorting, and processing methods together with subsidiaries under the Hanwa Group, and sell them as recycled raw materials to various manufacturers.

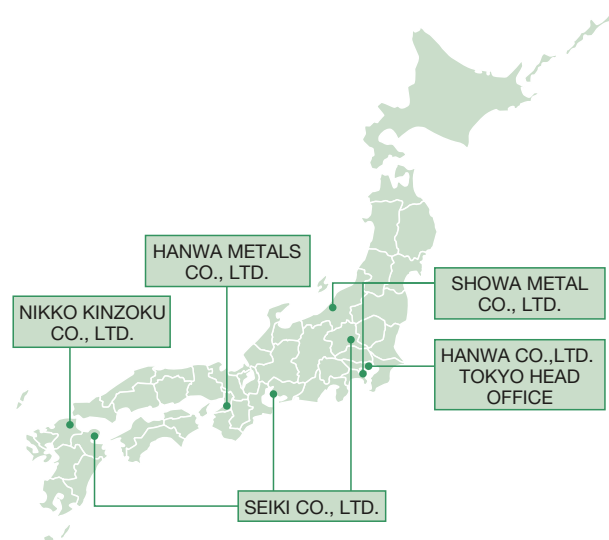


- **Main products:** Stainless steel and high-performance raw material scrap
- **Department:** Metal Recycling Department-2

Highlight

Domestic Collection Network

In the metal recycling business, it is important to stably procure scrap metal. At Hanwa, subsidiaries Showa Metal Co., Ltd. (Kanagawa/Niigata), Hanwa Metals Co., Ltd. (Osaka), SEIKI Co., Ltd. (Aichi, Gunma, Oita), and Nikko Kinzoku Co., Ltd. (Fukuoka) have established a network for collecting and sorting scrap metal generated in various regions and supplying it to secondary alloy manufacturers and rolling manufacturers.





Food Products

In the Foods business, we have one of the highest import shares in a number of marine products. In order to further develop markets, in recent years we have established local subsidiaries in Europe, South America, and other regions to streamline our purchasing operations. We are actively working to meet demand in downstream areas sales through our sales companies in the U.S. and Japan. For products processed at our overseas affiliated factories, our employees manage the entire process from procurement of raw materials and local processing, to final product sales, with a thorough quality control system in place.

● Marine Products

We import marine products caught in waters around the world to Japan or process them at affiliated factories in Asia and other regions, and sell them to food processors, retailers, and the food service industry. Food sales companies established in Japan and the U.S. are actively marketing superior products produced in China, Thailand, Vietnam, and other countries to a consumer base closer to downstream. In addition, as competition to procure marine resources around the world increasingly intensifies, we buy directly through our local subsidiaries in the Netherlands and Chile, as well as through other overseas offices, and are proud of our high purchasing power. To ensure the safety and security of food products, our employees personally handle raw material procurement, local processing, and final product sales, and we supply safe, secure and high-quality food products with thorough production guidance and quality control.

- **Main products:** Salmon, shrimp, octopus, mackerel, herring roe, horse mackerel, pacific herring, salted salmon roe/salmon caviar, shishamo smelt, crab, arabesque greenling
- **Departments:** Food Department-1, 2, and 3

Highlight

Processed Marine Products

In 2012, we established Hanwa Foods Co., Ltd. as a wholesaler of marine products and other food products, and we are actively promoting the sale of a variety of high-quality processed marine products that we have consistently managed from raw material supply to production to the Japanese domestic end-market. Processed products produced by subsidiaries Maruhon Honma Suisan Co., Ltd. and East Japan Foods Co., Ltd. and affiliated processing plants overseas are sold to supermarkets, restaurant chains, convenience stores, and other consumers.



Highlight

Overseas Market Strategy

Seattle Shrimp & Seafood Company, Inc. was established in the United States in 2006 to develop the North American seafood sales market. In 2008, Hanwa Europe B.V. was established in the Netherlands to cultivate suppliers in Europe, West Asia, and Africa, and in 2014, Hanwa Chile Limitada was established in the Republic of Chile to purchase farmed salmon and proceeding new commercial market development in South America. In 2021, we opened an office in Toronto, Canada to focus on purchasing marine products from Canada's East Coast and developing new commercial products, and together with the Vancouver office, we focus on sales to the Canadian domestic market.



Livestock Products

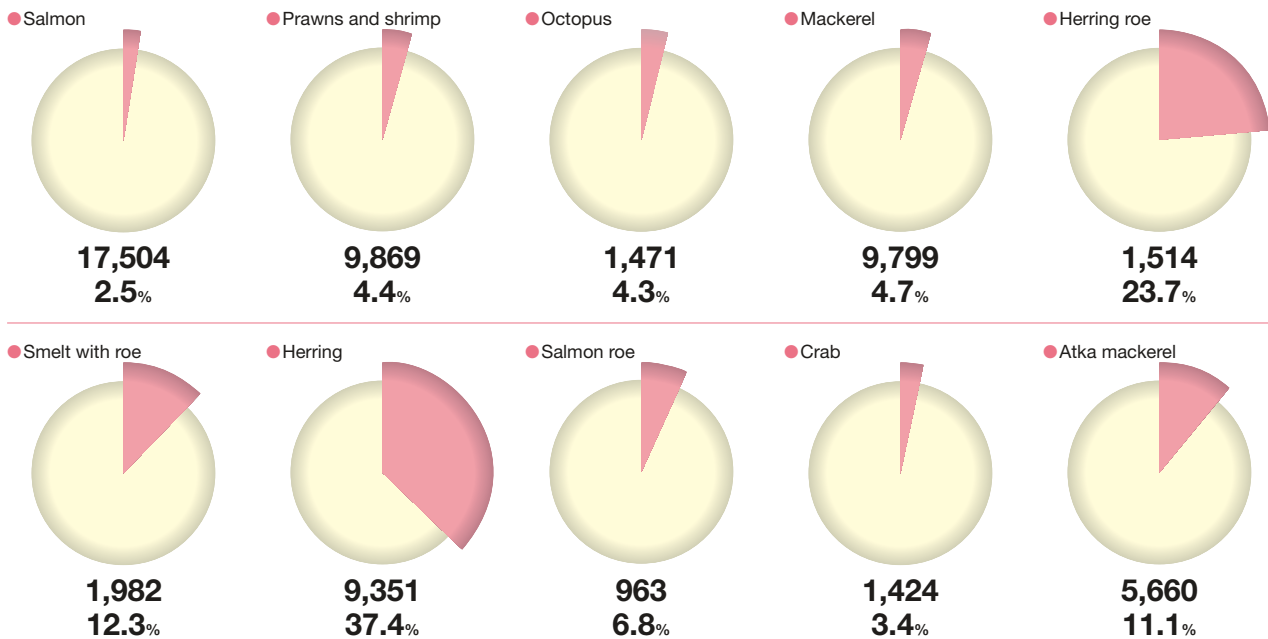
Besides marine products, Hanwa also focuses on livestock products, especially chicken meat. We have established a network of poultry farmers in Brazil and Thailand and processors in China to handle everything from raw meat to processed chicken meat products, and provide processed products to food processing companies, convenience stores, restaurant chains, etc. We also offer product proposals to meet downstream demand.

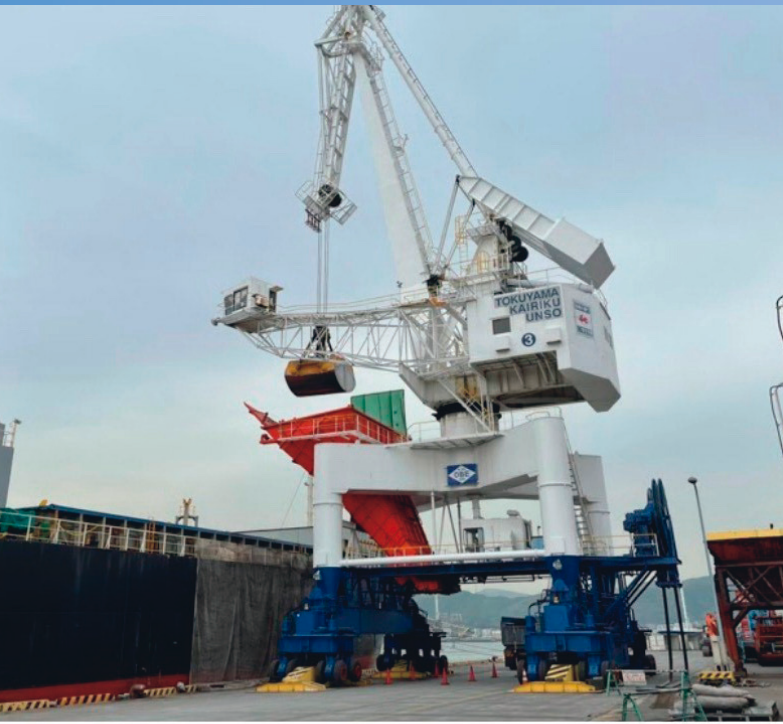
- **Main products:** Chicken meat
- **Department:** Food Department-1

Highlight

Our share of Japan's seafood market (2022)

(Unit: tons/years)





● Industrial Energy

As industrial energy prices soar due to the rising price of crude oil, we are focusing on timely supply by fully utilizing our diverse procurement sources and logistics functions such as inventory management. We have our own tank in Funabashi City, Chiba Prefecture, and also rent tanks in Hokkaido, Osaka, and Fukuoka to serve as supply bases for users throughout Japan. In the field of energy for ships, we have established a system to supply bunker oil at stable prices and quality to shipping companies at ports around the world, mainly in Asia and the Pacific Rim.

- **Main products:** Industrial energy (heavy oil, kerosene, LPG, LNG, industrial use gas), transportation energy (bunker oil, gasoline, diesel oil)
- **Department:** Energy Department-1



Energy & Life Living Materials

In the Energy business, we supply heavy oil, diesel oil and other petroleum products to a wide range of industries in Japan, including power plants and the steel, chemical and paper pulp industries. We also focus on supplying biomass energy and recycled energy. In the chemicals field, we also sell raw materials for lubricating oil, urea water, and various additives, as well as import and export waste paper. The Life Living Materials business deals in synthetic resin raw materials and polyethylene products such as plastic bags, garbage bags, and other household sundries, mainly from overseas.

*Images above: PKS on the bottom left, Wood pallet on the bottom right

● Recycled Energy

We import and sell biomass energy (PKS, wood pellets), which is expected to be a carbon-neutral renewable energy source to biomass power plant operators as part of our countermeasures to global warming. We partner with overseas suppliers to support long-term fuel procurement for biomass power plants. We also focus on handling recycled heavy oil, waste tires and RPF made mainly from industrial waste such as waste paper and plastic, and we sell them to paper manufacturers and other customers.

- **Main products:** Biomass energy (PKS, wood pellet), waste energy (regenerated fuel oil, RPF, waste tires, discarded construction chips)
- **Department:** Energy Department-2 and 3



Highlight

Biomass Fuel

We import wood-based biomass fuels such as palm kernel shells (commonly known as PKS, palm oil extraction residue) and wood pellets mainly from Southeast Asia and sell them to power generation companies. In Indonesia we have a joint venture with a local company to operate a wood pellet plantation and we are leveraging our network to ensure a stable supply over a long period of time.



Highlight

Thermal Recycling

RPF contributes greatly to global environmental protection as a recycled fuel by reducing CO₂ emissions, etc. Our RPF sales volume is one of the highest in Japan. In addition to our nationwide network of RPF factories, our Group companies include Seibu Service Co., Ltd., and Alpha Forme Co., Ltd., which manufacture RPF, establish stable supply system.



● Household Goods

Hanwa sells household goods to retailers all over Japan, making good use of unique logistics capabilities that enable small lots of multiple products, and its global procurement capabilities with a focus on Asia. Our strength lies in our ability to provide integrated services, starting with product development, through raw material feed, manufacturing, quality and inventory control, and delivery, to offer a broad lineup of household goods. We are expanding our business in the face of intensifying competition by strengthening our value chain through active investments in overseas joint venture manufacturing factories and logistics systems. We are also working with our plastics business to expand sales of environmentally-friendly products toward a decarbonized society.

- **Main products:** Plastic bags, cleaning solutions, wet tissues, face masks, sponges, towels, leisure goods, toilet paper, envelopes, stationery, drinking straws, paper cups, paper plates, toothbrushes, cotton gloves, leather boots and other daily consumables and miscellaneous goods
- **Department:** Life Living Materials Department



● Paper Products and Used Paper

For more than 30 years, we have been selling a wide range of used paper, from general used paper such as newspapers and cardboard to high-grade used paper such as milk cartons and printing paper as raw materials for production to paper manufacturers in Japan and overseas. In recent years, we have also been focusing on handling eco-friendly paper products such as cardboard made from used paper and export of liner, corrugated core and Kraft base paper raw materials to Southeast Asia, where the market is expanding rapidly.

- **Main products:** Metal interleaving paper, boxboard cuttings, used cardboard, high quality used paper (high quality white paper, milk cartons, old wrappers, etc.), used office papers (printing and report sheets generated in offices), wastepaper, paper products
- **Department:** Energy Department-2



Synthetic Resin

We sell mainly general-purpose resins such as polyethylene, polypropylene, and polystyrene to domestic and overseas customers. We are actively promoting sales of synthetic resins to manufacturing factories of our Living Materials business to strengthen our feed businesses overseas. In addition, we also deal in bioplastics and recycled raw materials, and strive to reduce by functional resins for a decarbonized society.

- **Main products:** Synthetic resins such as polyethylene, Polypropylene and Polystyrene
- **Department:** Life Living Materials Department



Chemicals

We contribute to the stable supply of raw materials for lubricants and other products both domestically and internationally by leveraging our strong relationships with global chemical manufacturers around the world and expertise. In particular, we have been providing a stable supply of PAO, PIB, and other synthetic chemical raw materials for over 30 years to a wide range of industries, including petroleum wholesalers and chemical manufacturers, as well as supporting product development. We also use our network of more than 60 overseas offices to expand our global logistics operations, including bulk trading that connects countries around the world, searching for optimal raw materials, exporting products, and providing distribution support.

- **Main products:** Lubricating oil base materials like PAO, PIB, addition agents, urea/urea water, hydrogen peroxide
- **Department:** Energy Department-2



Highlight Urea Water

The high-grade urea water made with urea as the main ingredient is used as nitrogen compound (NOx) reducing additives. Hanwa focuses on trading urea for its use in fertilizer, manufacturing industries, automobiles, ships, etc., and we boast the highest volume of transactions in Japan. We contribute to the prevention of greenhouse gas emissions into the atmosphere by reducing reaction of nitrogen compound emitted by diesel vehicles such as large trucks and buses.





Lumber & Plywood

The lumber business imports lumber products, plywood, etc., and sells them to the building material trading companies, building material manufacturers, distributors, lumber wholesalers, builders, etc. In addition, we also focus on domestic timber supply in domestic and overseas markets. Besides fixtures, interior finish materials, etc., for the housing manufacturers, we are also expanding into non-wood fields such as steel-made ceiling joists which were traditionally mainly made of wood, reinforcing bars for housing foundations, pre-processing.

Lumber/Plywood

We import and sell high-quality lumbering products all over the world including North America (USA, Canada), Europe (Finland, Sweden, Romania, Austria), Russia, China, etc. in response to the demands of construction and architecture in Japan. Our company's lumber business has been boosted due to precise inspection of goods, stocking negotiations by global representatives and our network. In particular, we boast the largest market share in Scandinavian products, with an extensive product lineup that exceeds that of our competitors. In addition, in recent years, Hanwa has focused on the domestic timber business, developing a wide range of markets with a focus on exporting logs and expanding sales of domestic plywood.

- **Main products:** Structural materials (KD, laminated lumber, LVL), Scantling materials (KD, FJ, lamination layer, LVL), domestic conifer plywood, dimension lumber, laminas, original plates (KD, LVB)
- **Department:** Lumber and Plywood Department-1

Highlight

Domestic Timber Business

Since 2006, when we exported Japanese logs to India on a trial basis, we have been pioneering efforts to develop overseas demand ahead of our competitors and have led the way in expanding exports of Japanese timber. Today, Hanwa exports logs and lumber to China, Korea, Taiwan, and Southeast Asia from ports in Kyushu and other areas. We are also working to use variety of wood without waste for establishing a supply system for raw material logs for domestic lumber and plywood manufacturers, as well as for fuel for wood biomass power generation, which has gained a lot of attention in recent years.



Housing Materials

In order to expand our upstream-centered trade area to include downstream processes, we sell processed products to housing companies, which are end users in the lumber industry. Taking advantage of economies of scale as a major player in the imported lumber industry, competitive raw materials are processed and delivered to construction sites based on individual building specifications by the processors to whom we have been selling our products. In addition to our mainstay wood products, Hanwa offers a wide range of products and services, including interior materials, plumbing, exterior materials, and furniture. We will continue to create new businesses by taking into account the various needs of housing companies and utilizing the information, action, and Group network of Hanwa.



- **Main products:** Pre-cut finished goods, steel ceiling joists, boards/insulators, interior and exterior building materials, reinforcing bar units, CAD entry
- **Department:** Lumber and Plywood Department-2

Highlight

Steel Ceiling Joist/Reinforcing Bar Foundation

In the field of ceiling base materials (ceiling joists) for houses, which were conventionally mostly made of wood, we have partnered with processing plants to promote the use of steel ceiling joists in homes throughout Japan, to increase the market share of steel ceiling joists due to their resistance to deformation and stable construction period.

In the field of reinforcing bar foundation, which was often assembled onsite, we have also focused on the sale of factory-assembled reinforcing bar units, which are regarded for their high construction quality.





Machinery

The machinery business deals with amusement equipment facilities and industrial machinery.

In the amusement equipment facility business, we propose amusement machines and modeling productions to theme parks in various places, and even perform on-site construction and installation.

In the industrial machinery business, we sell various steel processing machines and transfer machines for domestic and overseas manufacturing industries.

Amusement Equipment

With the sale of amusement machines as the core, we are creating a consistent space from comprehensive design to special modeling to increase attractive customers. It also plays a role in introducing the latest industry trends to the Japanese market by concluding exclusive agency contracts with European and American manufacturers, which are advanced countries of amusement machines. The latest industry trends are tending to shift creating attraction for families from thrill ride (e.g.; roller-coaster) for young people. And also, in recent year we provide planning proposal about multi-themed swimming pools for young families.

- **Main products:** Roller coasters, water rides, merry-go-rounds, attractions for children, role-playing games, water sliders, music fountains, others
- **Department:** Life & Amusement Department

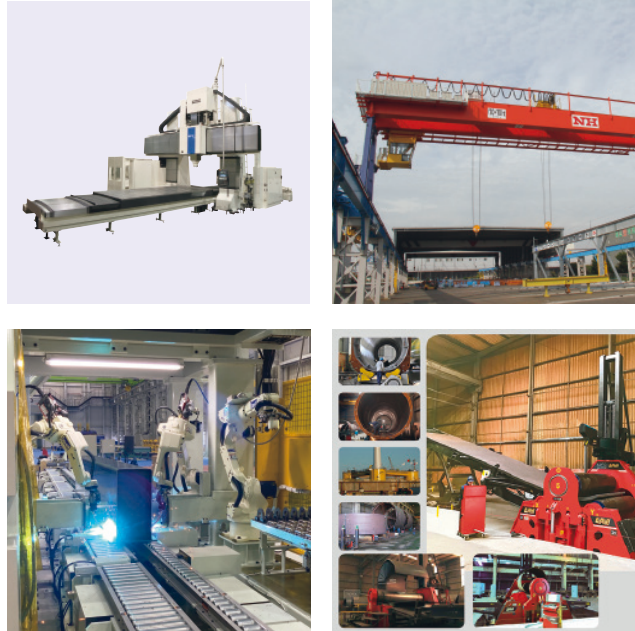


Industrial Machinery

In this business, we sell many types of steel fabrication equipment and transport equipment such as cranes to Japan as well as China, Southeast Asian countries and other countries. As a response to environmental problems in recent year, we also strive to sell equipment that is compatible with factories and the surrounding environment. We are also focusing on labor-saving equipment as it becomes difficult to secure human resources.

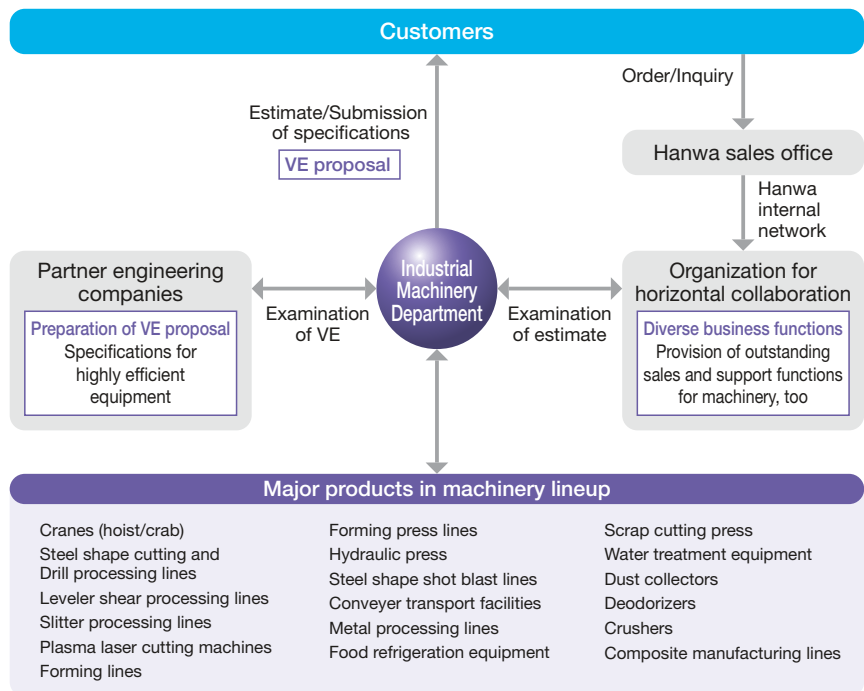
Another strength of this business is the establishment of a system for creating VE proposals for the efficient machinery required by the capital expenditure plans of our customers in other business units, especially operations involving steel.

- **Main products:** Crane, Steel shape cutting machines, hole punching machines, shot blast, forming lines, tip processing machines, slitter processing lines, leveler shear processing lines, cranes, beveling machines, dust collectors, deodorizers, water treatment equipment, crushers, others
- **Department:** Industrial Machinery Department



Hanwa will provide solid support to your company which is considering capital investment. Close ties between our industrial machinery department and prominent machinery manufacturers give us an expansive information network and engineering skills. This skill allows us to devise the best solution for each capital investment plan.

An important capital investment that will realize the further development of your company in the future. To address this issue, Hanwa's Industrial Machinery Department will provide optimal VE proposals that match your needs. As an "equipment professional" from transportation equipment to manufacturing and processing equipment lines, we will respond to all issues related to capital investment. We invite companies to contact a Hanwa sales representative. We will send a team of specialists who can determine issues and requirements and help devise solutions.





Sustainability

Hanwa's aim is to contribute widely to society by satisfying the varied needs of customers as a distribution specialist. Our mission is to play a part in the sustainable development of the local community and the world through our business.

The world is facing environmental issues such as global warming and environmental pollution by wastes and social issues such as poverty and human rights violations.

We believe that promoting business activities that take the environment, society, and corporate governance into account and responding to the expectations of a variety of stakeholders will lead to sustainable growth.

Hanwa Group Basic Sustainability Policy

As a “distribution specialist” (advocated in the corporate philosophy) that identifies with various stakeholders and grasps their needs, the Hanwa Group will connect with stakeholders through tangible and intangible services, make a broad contribution to society, and pass on a prosperous earth and comfortable society to the next generation.

1. Attaining sustainability through business

As a distributor, we will build a sustainable supply chain and contribute to industries and society by grasping the needs of suppliers and users at every stage and providing a wide variety of products and services.

2. Creating a sound and transparent organization

We aim for management that is responsive to the various stakeholders by all sharing the values of the company creed (Trust, honesty, ingenuity, harmonious cooperation, contribution) and making decisions that take regulatory compliance and risk into consideration through appropriate and transparent processes.

3. Creating a workplace where diverse personalities blend and enhance one another

By providing a healthy and stress-free work environment for diverse employees regardless of nationality or gender, and by providing a stage commensurate with one's abilities, we will foster a place where we can enthusiastically strive for self-development and self-improvement and work hard together.

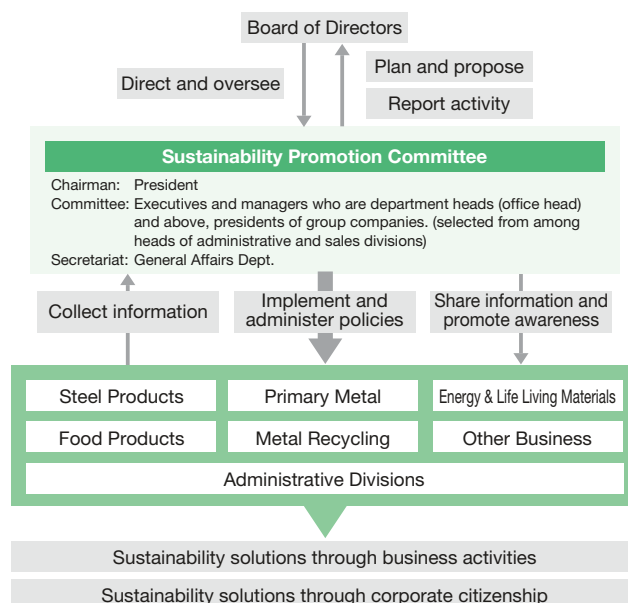
4. Passing down a rich global environment

We will conserve ecosystems by observing trading rules and environmental regulations, making effective use of resources and reducing the environmental burden, passing on to future generations a global environment with less climate change and pollution, where a wide variety of organisms coexist and natural resources such as forests and oceans are used sustainably.

5. Making a society where everyone can live comfortably a reality

We will create global partnerships and contribute to the development of comfortable and healthy international and local communities by respecting individual human rights, cultural and customary differences between countries and regions, not taking part in human rights abuses or discrimination, and through cross-border transactions.

● Sustainability Promotion Structure



Hanwa Scholarship Program

Philosophy of the Hanwa Scholarship Program

The Hanwa Scholarship Foundation was established in 1957 as part of activities to commemorate the 10th anniversary of Hanwa's establishment.

Jiro Kita, the founder of Hanwa, decided to establish the foundation based on the philosophy of "contributing to society based on an awareness of a company's social responsibilities." The foundation began with a contribution of ¥10 million when Hanwa's own capital was ¥100 million.

When the scholarship program began, Japan's economy was starting to improve. But economic restraints still prevented many talented and ambitious students from attending high schools. The foundation was established to provide scholarships to outstanding students with limited economic resources. The objective was to foster the development of individuals who could make significant contributions to progress in Japan.

Jiro Kita believed "People are a treasure for society as a whole rather than merely for individual companies. Helping educate many talented individuals is an endeavor that will have an effect on Japan's future." This spirit remains at the heart of the scholarship program today.

Looking Ahead to More Achievements

The Hanwa Scholarship Foundation, which became a Public Interest Incorporated Foundation in April 2011, continues to grow steadily, it had distributed a total of JPY700.00 million in total assets, for a total of 1,200 recipients. In addition to the existing domestic scholarships based on lending, in fiscal 2015 it launched a benefit-based overseas scholarship program.

As globalization progresses, the foundation hope that as many students as possible will expand their horizons through studying abroad, hone their knowledge, and succeed among talented young people from around the world. Japan has become an economically prosperous country. Beginning in 2021, we are expanding eligibility for our benefit-type scholarships to domestic students, with a goal of creating a comprehensive system that meets the needs of the times.

On the other hand, there has been a rising arguments on the revitalization of education, including a decline in the population due to the declining birthrate, widening economic disparities, and a decline in the level of education. Under characteristics as a private scholarship foundation, the Hanwa Scholarship Foundation will further develop its activities, and support the younger students who will lead the next generation to play an active role in society.

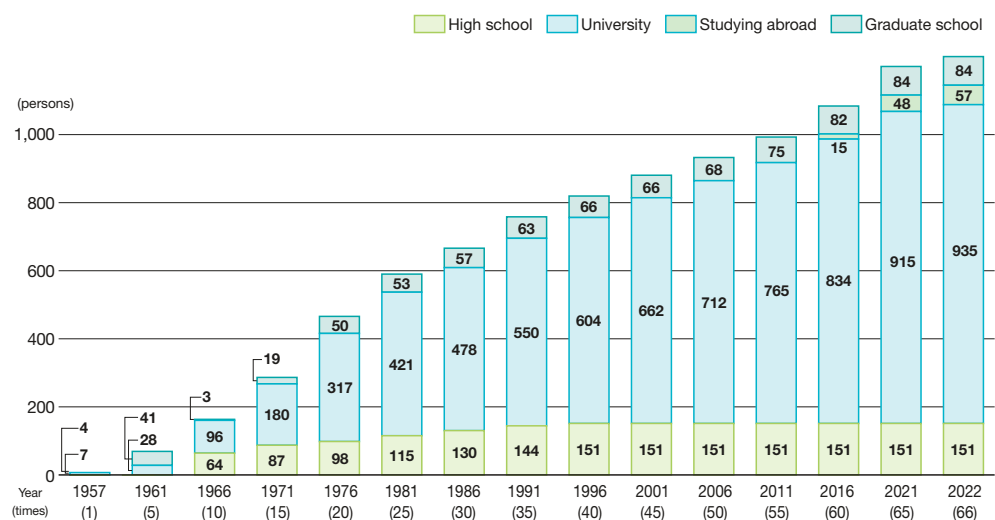


Founder, Hanwa Co., Ltd.
and Hanwa Scholarship
Foundation

Jiro Kita

北 二郎

Accumulated Number of Scholarship Students



Hanwa Group Human Rights Policy

Hanwa and its subsidiaries (hereafter “the Group”) have a corporate philosophy of making a broad contribution to society by satisfying various needs of customers as a “distribution specialist.” Based on this philosophy, we aim to create a sustainable international and local communities through our business.

The Group (which operates in various countries around the world) believes that respect for human rights is the foundation of our business, and we will clarify this approach in this policy and strive to fulfill this responsibility.

1. Scope of application of this policy

This policy applies to all officers and employees of the Group.

We also expect our suppliers and other business partners and other relevant parties to respect this policy.

2. Support for international norms and principles regarding human rights

The Group supports and respects international norms on human rights such as the United Nations’ International Bill of Human Rights (Universal Declaration of Human Rights and the International Covenants on Human Rights), which stipulates the fundamental human rights of all people in the world and the International Labor Organization (ILO)’s ILO Declaration on Fundamental Principles and Rights at Work, which stipulates fundamental rights at work (freedom of association and collective bargaining rights, prohibition of forced labor, effective abolition of child labor, prohibition of discrimination in employment and occupation), and the Guiding Principles on Business and Human Rights agreed by the United Nations Human Rights Council in 2011.

3. Conducting human rights due diligence

The Group will endeavor to track, prevent, or mitigate the negative human rights effects that may be caused through its business.

4. Remedy

If the Group’s business activities cause or reveal a negative impact on human rights, we will work to correct them through appropriate procedures and dialogue.

5. Dialogue and consultation

The Group will hold dialogues and consultations with relevant stakeholders as appropriate as part of efforts in line with this policy.

6. Education and awareness

The Group will offer appropriate education to officers and employees and strive to prevent negative effects on human rights.

7. Report

The Group will appropriately report on its efforts to respect human rights in this policy through various reports and websites.

Consideration for the environment

Hanwa’s basic environmental policy is to make the best efforts to realize sustainable development in order to pass on the rich global environment to the next generation. As the world faces various environmental issues, we will contribute to the realization of a sustainable society by tackling issues such as the realization of a sound material-cycle society, effective use of resources and energy, pollution prevention, and biodiversity.

The Environmental Policy of Hanwa Co., Ltd.

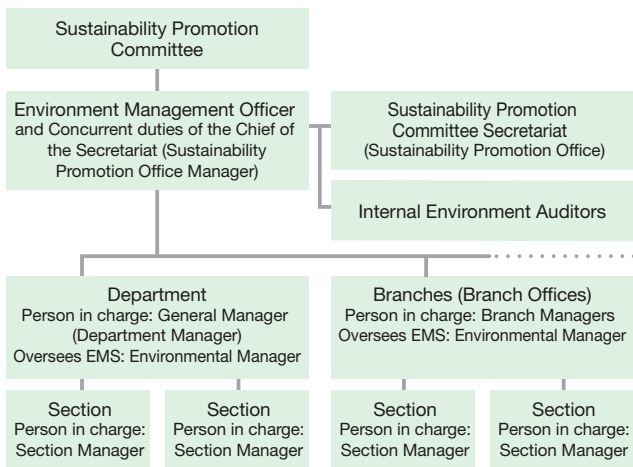
Basic Policy

Living by our motto of “Footwork, Teamwork and Network” and our ongoing efforts to improve operations under the principles of Hanwa Knowledge Quality Control (HKQC), Hanwa Co., Ltd. and Hanwa Group companies—in our position as a trading company that has made a name for ourselves through our business activities—will endeavor our utmost to attain sustainable development so that future generations will inherit a fertile global environment.

Guidelines for Corporate Action

- (1) Continuous improvement of the environmental management system.
Hanwa Co., Ltd. will implement and review its environmental objectives and goals based on this environmental policy, and operate and continually improve the environmental management system.
- (2) Compliance with relevant environmental laws and regulations.
Hanwa Co., Ltd. will comply with relevant environmental international treaties, laws and regulations of Japan and countries concerned, and other agreements and requirements, etc. of the trade industry which Hanwa Co., Ltd. agrees to obey.
- (3) Contribution to a sustainable recycling system for an economic society.
By actively engaging in the recycling business etc., Hanwa Co., Ltd. will contribute to the realization of a sustainable recycling system for an economic society.
- (4) The effective use of natural resources and energy.
Hanwa Co., Ltd. will give careful consideration to the preservation of the global environment, and make use of resource and energy effectively.
- (5) Consideration of natural environment.
In addition to always considering the reduction of adverse environment impacts and making every effort to prevent pollution, Hanwa Co., Ltd. recognizes the critical importance of the conservation and sustainable use of biodiversity and will always take the natural environment into consideration.
- (6) Promotion of environmental awareness.
Hanwa Co., Ltd. will inform all employees of this policy and actively encourage them to recognize the importance of environmental preservation. This environmental policy will also be made available to the public.

● Environmental management structure



Approaches to Climate Change

Climate change has various effects on people’s lives and corporate activities, including the natural environment such as eco-systems, and there is concern that its effects will intensify.

Under these circumstances, we recognize that dealing with climate change is an important issue that we should tackle. We believe that we need to take action in light of both “the impact of our business activities on climate change” and “the impact of climate change on our company.”

We will promote efforts to reduce greenhouse gas emissions in our business activities and create a carbon-neutral economy through our business and will actively work to minimize the risks of climate change.

Highlight

ISO14001 certification

All Hanwa business sites in Japan received ISO14001 certification for their environmental management systems in April 2000 and have renewed ISO14001:2015 successfully in 2016. In accordance with the environmental policy, we are constantly improving these systems while using a variety of business activities with the goal of achieving sustainable growth.

Certification date: April 27, 2000
 Certification agent: Lloyd’s Register Quality Assurance Limited (LRQA)
 Certification number: 0066379

Highlight

Support for TCFD recommendations

In July 2022, we expressed our support for the TCFD recommendations. We will take climate change seriously, deepen our understanding of the opportunities and risks that affect our business, and strive to proactively disclose our efforts.

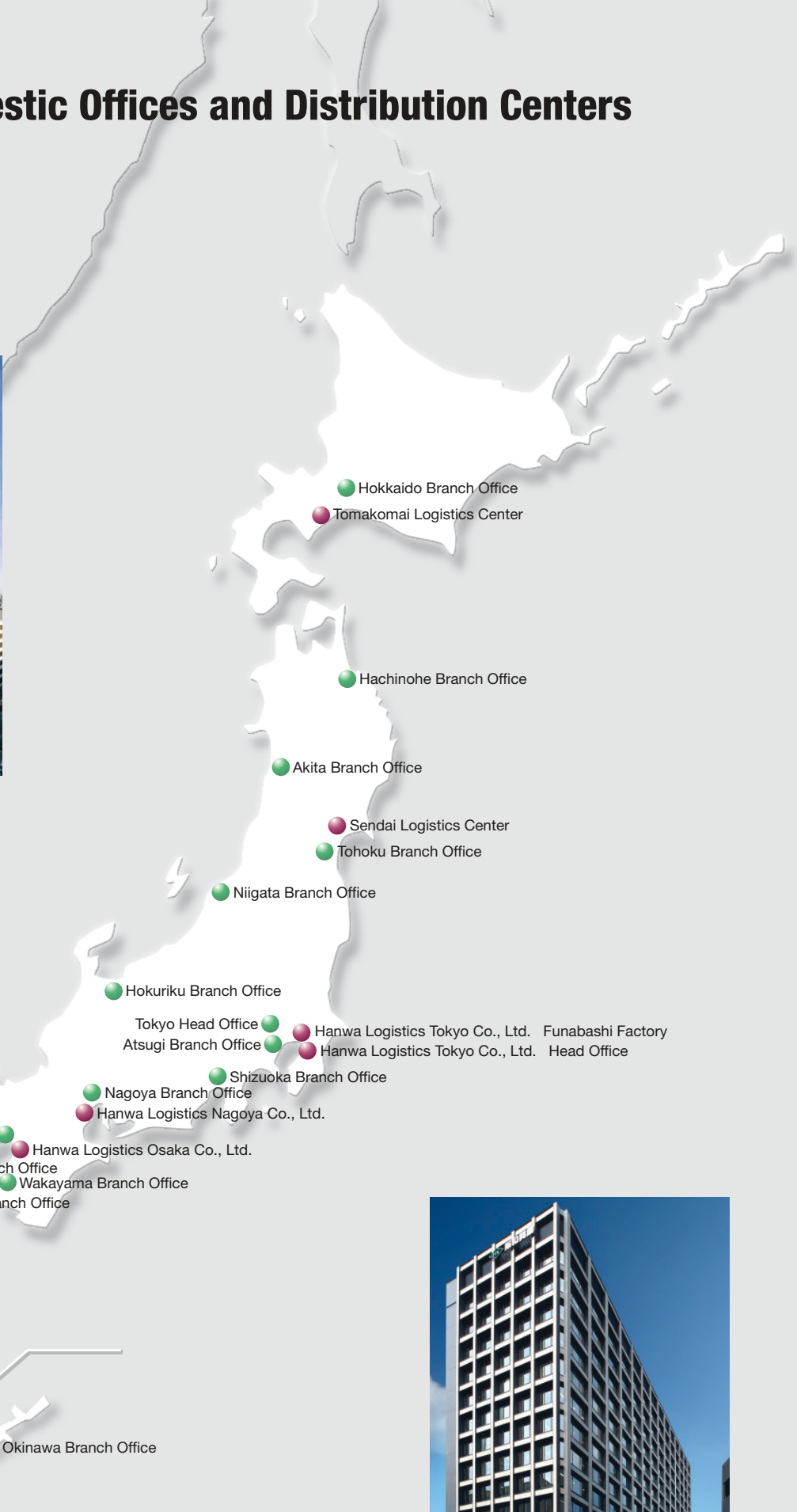
*TCFD refers to the Task Force on Climate-related Financial Disclosures established by the Financial Stability Board (FSB) at the request of the G20 in order to study how to disclose climate-related information and deal with financial institutions.



Network of Domestic Offices and Distribution Centers

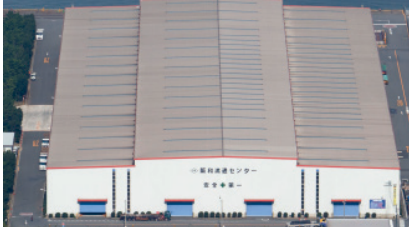


Tokyo Head Office



Osaka Head Office

- Head Office/Branch Office
- Distribution Center



● Hanwa Logistics Tokyo Co., Ltd.

Head Office

3-7-2 Akanehama, Narashino, Chiba 275-0024
 TEL: +81-47-454-8001 FAX: +81-47-454-8916
<http://www.hanwa.co.jp/hrc/tokyo/>
 Land area: 65,874 m²
 Warehouse capacity: 70,000 tons
 Fabrication facilities: Leveler processing line,
 H-beam processing line



Funabashi Factory

1-17-1 Hinode, Funabashi, Chiba 273-0015
 TEL: +81-47-432-2940 FAX: +81-47-432-2942
 Land area: 30,780 m²
 Warehouse capacity: 4,094 KL
 Facilities: Fuel oil tank/supply station



● Hanwa Logistics Osaka Co., Ltd.

1-65 Chikkoyawata-machi, Sakai-ku, Sakai,
 Osaka 590-0901
 TEL: +81-72-225-2720 FAX: +81-72-225-2727
<http://www.hanwa.co.jp/hrc/osaka/>
 Land area: 92,357 m²
 Warehouse capacity: 140,000 tons
 Fabrication facilities: Leveler processing line with
 Automatic packaging line, H-beam processing line,
 Column processing line (cutting•beveling)



● Hanwa Logistics Nagoya Co., Ltd.

13 Kaneoka, Tobishima-mura, Ama-gun,
 Aichi 490-1445
 TEL: +81-567-55-2691 FAX: +81-567-55-2664
<http://www.hanwa.co.jp/hrc/nagoya/>
 Land area: 74,340 m²
 Warehouse capacity: 100,000 tons
 Fabrication facilities: Leveler processing line,
 H-beam processing line, Column processing
 line (cutting•beveling), and Aluminum scrap
 shredder



● Hanwa Co., Ltd.
Tomakomai Logistics Center

20-2 Harumi-cho Tomakomai, Hokkaido 059-1374
 TEL: +81-144-52-1015 FAX: +81-144-57-6402
 Land area: 18,868 m²
 Warehouse capacity: 10,000 tons



● Hanwa Co., Ltd.
Sendai Logistics Center

2-3 Matsuzakadaira, Taiwa-cho, Kurokawa-gun,
 Miyagi 981-3408
 TEL: +81-22-347-1675 FAX: +81-22-347-1676
 Land area: 19,227 m²
 Warehouse capacity: 8,000 tons
 Fabrication facilities: H-beam cutting line,
 Shot-blast line



● Hanwa Co., Ltd.
Kyushu Logistics Center

293-3 Koga, Tsukushino-city, Fukuoka 818-0047
 TEL: +81-92-918-7350 FAX: +81-92-918-7351
 Land area: 48,916 m²
 Warehouse capacity: 20,000 tons

Domestic Affiliated Companies

Steel Products

Hanwa Daisun Co., Ltd.



16F, Ginza Shochiku Square
1-13-1, Tsukiji, Chuo-ku,
Tokyo 104-8429
TEL: +81-3-6264-0130
FAX: +81-3-6264-0388

Daisun Co., Ltd.



4-5-7, Itachibori, Nishi-ku,
Osaka 550-0012
TEL: +81-6-6543-3711
FAX: +81-6-6531-9658

Matsuoka Kozai Co., Ltd.



76-1, Konan-cho Nojiri,
Koka, Shiga 520-3307
TEL: +81-748-86-3003
FAX: +81-748-86-6535

Kamei Co., Ltd.



3-20-14, Takewara,
Matsuyama,
Ehime 790-0053
TEL: +81-89-945-8181
FAX: +81-89-945-8189

Taiyokozai Co., Ltd.



4F, HK Yodoyabashi Garden
Avenue Bldg., 4-3-9,
Fushimi-machi, Chuo-ku,
Osaka 541-0044
TEL: +81-6-6221-0220
FAX: +81-6-6221-0221

Hokuriku Column Co., Ltd.



2-33-5, Ariso, Imizu,
Toyama 933-0251
TEL: +81-766-86-1171
FAX: +81-766-86-2005

Daiko Sangyo Co., Ltd.



8F, VPO Hon-machi Central,
4-4-7, Kitakyuhouji-machi,
Chuo-ku,
Osaka 541-0057
TEL: +81-6-6121-9171
FAX: +81-6-6121-9176

Hanwa Steel Service Ltd.



Minakuchi-Second-Techno-park,
32-2 Hinokigaoka,
Minakuchi-cho, Kouga,
Shiga 528-0068
TEL: +81-748-63-8211
FAX: +81-748-63-8260

Daikoh Owano Co., Ltd.



8-1-41, Nanko-higashi,
Suminoe-ku,
Osaka 559-0031
TEL: +81-6-6612-5781
FAX: +81-6-6612-3882

Tanaka Steel Trading Co., Ltd.



150, Shimokawasaki,
Hanyu-shi,
Saitama 348-8525
TEL: +81-48-562-1212
FAX: +81-48-561-9656

Subaru Steel Co., Ltd.



11F, Kintetsushinnanba Bldg.,
1-4-38, Minatomachi,
Naniwa-ku, Osaka 556-0017
TEL: +81-6-6635-2330
FAX: +81-6-6635-2340

Fukuoka Kogyo Co., Ltd.



2-88-1, Shouwa-machi,
Tsuyama,
Okayama 708-0886
TEL: +81-868-23-2171
FAX: +81-868-23-2184

MS Hiyoshi Kozai Co., Ltd.



4-5-33, Kitamura, Imabari,
Ehime 799-1502
TEL: +81-898-35-5803
FAX: +81-898-35-5804

Tohan Steel Co., Ltd.



1-17-1, Hinode, Funabashi,
Chiba 273-0015
TEL: +81-47-431-8201
FAX: +81-47-431-8205

S.K. Engineering Co., Ltd.



16F, Ginza Shochiku
Square Bldg.,
1-13-1 Tsukiji, Chuo-ku,
Tokyo 104-8429
TEL: +81-3-3544-5101
FAX: +81-3-3544-8711

Izumo Tec Co., Ltd.



7F, VPO Hon-machi Central, 4-4-7,
Kitakyuhouji-machi, Chuo-ku,
Osaka 541-0057
TEL: +81-6-6243-1068
FAX: +81-6-6243-1138

Hirouchi Steel Co., Ltd.



1-551, Koorigawa,
Yao-shi, Osaka 581-0872
TEL: +81-7-2940-1171
FAX: +81-7-2940-1175

Mie Kogyo Co., Ltd.



6381-1, Karasu-cho, Tsu,
Mie 514-0315
TEL: +81-59-292-2811
FAX: +81-59-292-3055

San Ei Metal Co., Ltd.



6F, HK Yodoyabashi Garden
Avenue Bldg., 4-3-9,
Fushimi-machi, Chuo-ku,
Osaka 541-0044
TEL: +81-6-4707-0301
FAX: +81-6-4707-2810

Kaneki Co., Ltd.



17-2, Gionden, Ichida,
Kumiyama-cho, Kuse-gun,
Kyoto 613-0022
TEL: +81-774-43-5425
FAX: +81-774-44-1927

Sanyo Kouzai Co., Ltd.



2-1-13, Minami Yoshijima,
Naka-ku, Hiroshima,
Hiroshima 730-0826
TEL: +81-82-243-0288
FAX: +81-82-243-0455

Hanwa Eco Steel Corporation



4F, Shinkamagaya F Tower,
2-8-17, Shinkamagaya,
Kamagaya,
Chiba 273-0107
TEL: +81-47-404-8514
FAX: +81-47-404-8547

Sodensha Co., Ltd.



18-1, Amida,
Furukawa Kamizone,
Osaki, Miyagi 989-6264
TEL: +81-229-27-2165
FAX: +81-229-27-2166

Tekken Industry Company



2-10-2 Takase,
Maruoka-cho, Sakai,
Fukui 910-0355
TEL: +81-776-66-8215
FAX: +81-776-66-8251

Tatsuta Kogyo Co., Ltd.



6-5-4, Takami-cho, Yao,
Osaka 581-0017
TEL: +81-72-997-0255
FAX: +81-72-997-6111

Ohmi Sangyo Co., Ltd.



4-13-13, Tsuru-machi,
Taisho-ku, Osaka 551-0023
TEL: +81-6-4394-3500
FAX: +81-6-4394-3700

Stainless Pipe Kogyo Co., Ltd.



4-16-8, Mokuzai-dori,
Mihara-ku, Sakai,
Osaka 587-0042
TEL: +81-72-361-2882
FAX: +81-72-361-2886

Metaltech Co., Ltd.



4-29-9, Midori, Sumida-ku,
Tokyo 130-0021
TEL: +81-3-3633-8541
FAX: +81-3-3632-5530

Wing Co., Ltd.



1059-5, Tanaka-machi,
Isesaki, Gunma 372-0814
TEL: +81-270-61-5175
FAX: +81-270-61-5172

TOHO METAL Co., Ltd.



2-28-1, Horifune, Kita-ku,
Tokyo 114-0004
TEL: +81-3-5902-4122
FAX: +81-3-5902-4133

Japanlife Co., Ltd.



6F, Prime Tower, Kinshi-cho,
1-5-7, Kameido, Koto-ku,
Tokyo 136-0071
TEL: +81-3-6260-6301
FAX: +81-3-6260-6307

BiC Co., Ltd.



6F, Prime Tower, Kinshi-cho,
1-5-7, Kameido, Koto-ku,
Tokyo 136-0071
TEL: +81-3-6260-6365
FAX: +81-3-6260-6374

Metal Recycling

Showa Metal Co., Ltd.



6-26, HigashiOhgishima,
Kawasaki-ku, Kawasaki,
Kanagawa 210-0869
TEL: +81-44-277-1431
FAX: +81-44-277-1432

Hanwa Metals Co., Ltd.



SBS Logicom Nangang
Logistics Center 1F, 2-5-8,
Nanko-minami, Suminoe-ku,
Osaka 559-0032
TEL: +81-6-4703-4172
FAX: +81-6-4703-4174

Nikko Kinzoku Co.,Ltd.



1071, Tanoura,
Moji-ku, Kitakyusyu,
Fukuoka 801-0803
TEL: +81-93-332-0731
FAX: +81-93-332-0739

Seiki Co.,Ltd.



1-20, Nakata, Fuki,
Taketoyo-cho, Chita-gun,
Aichi 470-2531
TEL: +81-569-72-7551
FAX: +81-569-72-7552

Food Products

Hanwa Foods Co., Ltd.



1-7-4, Shintomi, Chuo-ku,
Tokyo 104-0041
TEL: +81-3-6228-3401
FAX: +81-3-3553-0177

Maruhon Honma Suisan CO.,Ltd



5-4-7, Hachikengojyohigashi,
Nishi-ku, Sapporo,
Hokkaido 063-0865
TEL: +81-11-756-3011
FAX: +81-11-756-3065

East Japan Foods Co., Ltd.



4-3-30, Kaduma-Minami,
Ishinomaki, Miyagi 986-0042
TEL: +81-225-94-8377
FAX: +81-225-94-8371

Energy & Life Living Materials

Toyo Energy Co., Ltd.



6F, HK Yodoyabashi Garden
Avenue Bldg., 4-3-9,
Fushimi-machi, Chuo-ku,
Osaka 541-0044
TEL: +81-6-6201-0681
FAX: +81-6-6201-0688

Seibu Service Co., Ltd.



17, Sumiyoshihama-machi,
Higashinada-ku, Kobe,
Hyogo 658-0042
TEL: +81-78-857-3818
FAX: +81-78-857-4141

Alpha Forme Co., Ltd.



17, Sumiyoshihama-machi,
Higashinada-ku, Kobe,
Hyogo 658-0042
TEL: +81-78-857-3818
FAX: +81-78-857-4141

Others

Halos Corporation



Prime Shintomi-cho Bldg.,
1-7-3, Shintomi, Chuo-ku,
Tokyo 104-0041
TEL: +81-3-3552-2698
FAX: +81-3-3552-2350

Hanwa Alpha Business Co., Ltd.



14F, Ginza Shochiku Square
1-13-1, Tsukiji, Chuo-ku,
Tokyo 104-8429
TEL: +81-3-3544-2401
FAX: +81-3-3544-2395

Network of Overseas Offices

Southeast Asia, South Asia and Australia

Overseas Offices

1 YANGON / MYANMAR
HANWA CO., LTD. MYANMAR REPRESENTATIVE OFFICE
 UNIT7, 11TH FLOOR, HAGL MYANMAR CENTRE TOWER 1, 192, KABA AYE PAGODA ROAD, BAHAN TOWNSHIP, YANGON, MYANMAR
 TEL: FAX: +95-1-9345-379

Subsidiaries

2 SINGAPORE / SINGAPORE
HANWA SINGAPORE (PRIVATE) LTD.
 1 RAFFLES PLACE, #11-61 ONE RAFFLES PLACE TOWER 2, 048616, SINGAPORE
 TEL: +65-6536-7822 FAX: +65-6536-7855

3 KUALA LUMPUR / MALAYSIA
HANWA (MALAYSIA) SDN. BHD.
 LOT 19-5, LEVEL 19, MENARA HAP SENG 2, NO.1, JALAN P. RAMLEE, 50250 KUALA LUMPUR, MALAYSIA
 TEL: +60-3-2022-2308 FAX: +60-3-2022-2164

4 PENANG / MALAYSIA
HANWA STEEL CENTRE (M) SDN. BHD.
 PLOT 33, JALAN PERUSAHAAN BUKIT MINYAK, BUKIT MINYAK INDUSTRIAL PARK, 14000 BUKIT MERTAJAM, PENANG, MALAYSIA
 TEL: +60-4-507-0033 FAX: +60-4-507-0055

5 BANGKOK / THAILAND
HANWA THAILAND CO., LTD.
 24TH FLOOR, UNIT 2401-2402, Q.HOUSE LUMPINI BUILDING, 1 SOUTH SATHORN ROAD, TUNGMAHAMEK, SATHORN, BANGKOK 10120, THAILAND
 TEL: +66-2-343-8877 FAX: +66-2-343-8878

6 CHONBURI / THAILAND
HANWA STEEL SERVICE (THAILAND) CO., LTD.
 700/625 MOO 4, 700/630 MOO 5, TAMBOL BAANKAO, AMPHUR PANTHONG, CHONBURI 20160, THAILAND
 TEL: +66-38-21-0200 FAX: +66-38-21-0085

7 RAYONG / THAILAND
HANWA METALS (THAILAND) CO., LTD.
 7/530 MOO 6 AMATA CITY INDUSTRIAL ESTATE, RAYONG, MAPYANGPHON SUB-DISTRICT, PLUAKDAENG, RAYONG 21140 THAILAND
 TEL: +66-33-017-741 FAX: +66-33-017-744

8 HO CHI MINH / VIETNAM
HANWA VIETNAM CO., LTD.
 UNIT 4-1, 19TH FLOOR, A&B TOWER, 76 LE LAI STREET, BENTHANH WARD, DISTRICT 1, HO CHI MINH CITY, VIETNAM
 TEL: +84-28-3822-5715 FAX: +84-28-3822-5725

9 HA NOI / VIETNAM
HANWA VIETNAM CO., LTD. HANOI BRANCH
 UNIT9-12, 9TH FLOOR, TNR TOWER, 54A NGUYEN CHI THANH, DONG DA DISTRICT, HA NOI, VIETNAM
 TEL: +84-24-7300-9155 FAX: +84-24-7300-9159

10 HA NOI / VIETNAM
HANWA SMC STEEL SERVICE HA NOI CO., LTD.
 LOT 47, QUANG MINH INDUSTRIAL ZONE, QUANG MINH TOWN, ME LINH DISTRICT, HA NOI, VIETNAM
 TEL: +84-24-3525-1522 FAX: +84-24-3525-1526

11 JAKARTA / INDONESIA
PT. HANWA INDONESIA
 JAKARTA MORI TOWER, 15TH FLOOR JL. JENDRAL SUDIRMAN KAV 40-41 JAKARTA 10210, INDONESIA
 TEL: +62-21-2509-8028

12 JAKARTA / INDONESIA
HANWA STEEL SERVICE INDONESIA
 MM 2100 INDUSTRIAL TOWN, BLOCK QQ-5, WEST CIKARANG, BEKASI 17520, INDONESIA
 TEL: +62-21-8998-1791 FAX: +62-21-8998-1794

13 SURABAYA / INDONESIA
PT. HANWA INDONESIA SURABAYA BRANCH
 SPAZIO 24HOUR OFFICES LANTAI 1 SUB CO UNIT 01 JALAN MAYJEND YONO SOEWOYO KAV.3 SURABAYA, JAWA TIMUR, 60226 INDONESIA
 TEL: +62-81-1988-5162

14 SURABAYA / INDONESIA
PT. HANWA ROYAL METALS
 JI.MAYJEN SUNKONO, DESA PRAMBANGAN, KEC KEBOMAS, KAB GRESIK 61161 JAWA TIMUR, INDONESIA
 TEL: +62-31-398-8262 FAX: +62-31-511-68370

15 HANWA / PHILIPPINES
HANWA PHILIPPINES CORP.
 14TH FLOOR, 6788 AYALA AVENUE, OLEDAN SQUARE, 1226 MAKATI CITY, METRO MANILA, PHILIPPINES
 TEL: +63-2-8817-5624 FAX: +63-2-8817-5956

16 MUMBAI / INDIA
HANWA INDIA PRIVATE LTD. HEAD OFFICE
 KANAKIA WALL STREET OFFICE NO 908, 9TH FLOOR B-WING, ANDHERI KUALA ROAD, CHAKALA, ANDHERI (EAST), MUMBAI 400 093, INDIA
 TEL: +91-22-4019-1300

17 NEW DELHI / INDIA
HANWA INDIA PRIVATE LTD. NEW DELHI OFFICE
 UNIT NO.301, TIME TOWER BUILDING, MG ROAD, SECTOR 28, GURUGRAM, HARYANA 122 002, INDIA
 TEL: +91-124-456-6100 FAX: +91-124-456-6111

18 CHENNAI / INDIA
HANWA INDIA PRIVATE LTD. CHENNAI OFFICE
 5H-1/5K/5K-1, 5TH FLOOR, CENTURY PLAZA, 560-562, ANNA SALAI, TEYNAMPET, CHENNAI 600 018, INDIA
 TEL: +91-44-33539100 FAX: +91-44-33539104

19 PERTH / AUSTRALIA
HANWA AUSTRALIA PTY LTD.
 ROOM 2843 AMP TOWER 140 ST GEORGES TERRACE PERTH WA 6000 AUSTRALIA
 TEL: +61-892-881-777

Other Affiliates

20 CHONBURI / THAILAND
PCM PROCESSING (THAILAND) LTD.
 AMATANAKORN INDUSTRIAL ESTATE, 700/411 (SOI KHOMAI 11) MOO 1, BAANGAO, PHARNTHONG, CHONBURI 20160, THAILAND
 TEL: +66-38-454-381 FAX: +66-38-454-386

21 BATANGAS / PHILIPPINES
SOHBI KOHGEI (PHILS.), INC.
 SPECIAL ECONOMIC ZONE, LIMA TECHNOLOGY CENTER, LIPA CITY, BATANGAS, PHILIPPINES
 TEL: +63-43-981-3830 FAX: +63-43-981-3829

22 BANGKOK / THAILAND
SIAM HANWA CO., LTD.
 24TH FLOOR, UNIT 2401-2402, Q.HOUSE LUMPINI BUILDING, 1 SOUTH SATHORN ROAD, TUNGMAHAMEK, SATHORN, BANGKOK 10120, THAILAND
 TEL: +66-2-343-8877 FAX: +66-2-343-8878

23 BANGKOK / THAILAND
HANWA FELLOWS ENGINEERING (THAILAND) CO., LTD.
 16TH FLOOR, UNIT 14B, BUBHAJIT BUILDING, 20 NORTH SATHORN RD., SILOM, BANGKOK 10500, THAILAND
 TEL: +66-2-234-7897 FAX: +66-2-234-7900

Australia



East Asia

Subsidiaries

1 SEOUL / KOREA

HANWA (KOREA) CO., LTD.

ROOM 3205, KOREA WORLD TRADE TOWER,
SAMSEONG-DONG, 511, YEONGDONG-DAERO,
GANGNAM-GU, SEOUL 06164, R.O.KOREA
TEL: +82-2-551-5387 FAX: +82-2-551-5575

2 BUSAN / KOREA

HANWA (KOREA) CO., LTD. BUSAN OFFICE

ROOM 504, INDUSTRY BUILDING, 37,
GWAEGAM-RO, SASANG-GU, BUSAN 46977,
R.O.KOREA
TEL: +82-51-319-1006 FAX: +82-51-319-1545

3 DALIAN / CHINA

HANWA (DALIAN) CO., LTD.

SHENMAO BUILDING, 12F, 147 ZHONGSHAN ROAD
XIGANG DISTRICT, DALIAN CITY, LIAONING 116011,
P.R.CHINA
TEL: +86-411-8-368-6954 FAX: +86-411-8-368-6934

4 QINGDAO / CHINA

HANWA (QINGDAO) CO., LTD.

UNIT 1006-7, SHANGRI-LA CENTRE OFFICE,
NO.9 HONG KONG MIDDLE ROAD, QINGDAO CITY,
SHANDONG 266071, P.R.CHINA
TEL: +86-532-8-577-9990 FAX: +86-532-8-577-9630

5 TIANJIN / CHINA

HANWA TRADING (SHANGHAI) CO., LTD. TIANJIN BRANCH

UNIT 1803, 18/F., METROPOLITAN TOWER,
183 NANJING ROAD HEPING DISTRICT,
TIANJIN 300051 P.R.CHINA
TEL: +86-22-6566-8618 FAX: +86-22-6566-8619

6 SHANGHAI / CHINA

HANWA TRADING (SHANGHAI) CO., LTD.

16F, SMEG PLAZA, 1386 HONG QIAO ROAD,
CHANG NING DISTRICT, SHANGHAI 200336,
P.R.CHINA
TEL: +86-21-6237-5260 FAX: +86-21-6237-5282

7 TAICANG / CHINA

CHANG FU STAINLESS STEEL CENTER (SUZHOU) CO., LTD.

NO.7 GUANZHOU EAST ROAD,
ECONOMIC DEVELOPMENT AREA, TAICANG CITY,
JIANGSU, P.R.CHINA 215400
TEL: +86-512-5359-0800 FAX: +86-512-5358-8942

8 WUHAN / CHINA

HANWA TRADING (SHANGHAI) CO., LTD. WUHAN BRANCH

ROOM 2106, K11 ATELIER, NO.626 JIEFANG
AVENUE, QIAOKOU DISTRICT, WUHAN CITY,
HUBEI 430032, P.R.CHINA
TEL: +86-27-8549-7132 FAX: +86-27-8578-7196

9 CHONGQING / CHINA

HANWA TRADING (SHANGHAI) CO., LTD. CHONGQING BRANCH

ROOM 1711, METROPOLITAN TOWER,
68 ZHOU RONG LU, CENTRAL DISTRICT,
CHONGQING 400010, P.R.CHINA
TEL: +86-23-6381-1101 FAX: +86-23-6381-7385

10 FUZHOU / CHINA

HANWA TRADING (SHANGHAI) CO., LTD. FUZHOU BRANCH

ROOM 1204, SHENGLONG FINANCIAL CENTER,
No.1 GUANGMING ROAD, FUZHOU CITY,
FUJIAN 350009, P.R.CHINA
TEL: +86-591-8-3354165 FAX: +86-591-8-3345202

11 NINGBO / CHINA

HANWA (NINGBO) METALS CO., LTD.

METAL ZONE, DINGHAI EAST ROAD,
ZHAOBAOSHAN STREET, ZHENHAI DISTRICT,
NINGBO CITY, ZHEJIANG PROVINCE
TEL: +86-574-5587-7611

12 DONGGUAN / CHINA

HANWA STEEL SERVICE (DONGGUAN) CO., LTD.

NO.42 WEIJIAN ROAD, CHASHAN TOWN,
DONGGUAN CITY, GUANGDONG 523391,
P.R.CHINA
TEL: +86-769-8182-1000 FAX: +86-769-8182-1001

13 GUANGZHOU / CHINA

GUANGZHOU HANWA TRADING CO., LTD.

UNIT 3701-3704, PROFIT PLAZA,
NO.76 WESTHUANGPU ROAD, GUANGZHOU CITY,
GUANGDONG 510623, P.R.CHINA
TEL: +86-20-8732-0451 FAX: +86-20-8732-0402

14 HONG KONG / CHINA

HANWA CO., (HONG KONG) LTD.

SUITE 1504, 15/F., 12 TAIKOO WAN ROAD,
TAIKOO SHING ISLAND EAST, HONG KONG
TEL: +852-2545-0110 FAX: +852-2542-2544

15 ZHONGSHAN / CHINA

GUANGZHOU HANWA TRADING CO., LTD. ZHONGSHAN BRANCH

UNIT 10, 28TH FLOOR, LIHE INTERNATIONAL
FINANCIAL CENTER, NO.16-3 ZHONGSHAN 3RD
ROAD, ZHONGSHAN CITY, GUANGDONG 528403,
P.R.CHINA
TEL: +86-760-2332-0706 FAX: +86-760-2332-0696

16 TAIPEI / TAIWAN

TAIWAN HANWA KOGYO CO., LTD.

RM.5, 7F., NO.57, FUXING N RD., SONGSHAN DIST.,
TAIPEI 10595, TAIWAN
TEL: +886-2-2721-3229 FAX: +886-2-2721-3226

17 KAOHSIUNG / TAIWAN

TAIWAN HANWA KOGYO CO., LTD.

ROOM B, 17TH FLOOR, NO.7 SU-WEI 4TH ROAD,
KAOHSIUNG, TAIWAN
TEL: +886-7-338-5508 FAX: +886-7-338-5433

Other Affiliates

18 SHANGHAI / CHINA

HANWA FELLOWS ENGINEERING (CHINA) CO., LTD.

16F, SMEG PLAZA, 1386 HONG QIAO ROAD,
CHANG NING DISTRICT, SHANGHAI,
200336 P.R.CHINA
TEL: +86-21-6237-5032 FAX: +86-21-6237-5190

19 NINGBO / CHINA

NINGBO BAOXIN STAINLESS STEEL CO., LTD.

XIAQU, BEILUN, NINGBO ECONOMIC &
TECHNOLOGICAL DEVELOPMENT ZONE,
ZHEJIANG, 315807, P.R.CHINA
TEL: +86-574-8671-8147 FAX: +86-574-8671-8132



North, South and Central America

Subsidiaries

1 NEW YORK / U.S.A.
HANWA AMERICAN CORP. HEAD OFFICE
 PARKER PLAZA, 12TH FLOOR, 400 KELBY STREET,
 FORT LEE, NJ 07024, U.S.A.
 TEL: +1-201-363-4500 FAX: +1-201-346-9890

2 SEATTLE / U.S.A.
SEATTLE SHRIMP & SEAFOOD COMPANY, INC.
 14205 SE 36TH STREET, SUITE 214, BELLEVUE,
 WA 98006, U.S.A.
 TEL: +1-206-812-2841 FAX: +1-206-812-2840

3 LOS ANGELES / U.S.A.
HANWA AMERICAN CORP.
LOS ANGELES BRANCH
 18300 VON KARMAN, SUITE 450, IRVINE, CA 92612,
 U.S.A.
 TEL: +1-949-955-2780 FAX: +1-949-955-2785

4 SAN DIEGO / U.S.A.
SAN DIEGO VISTA STEEL SERVICE
CORPORATION
 8753 KERNS STREET, SAN DIEGO, CA 92154,
 U.S.A.
 TEL: +1-619-671-9247 FAX: +1-619-671-9210

5 VANCOUVER / CANADA
HANWA CANADA CORP. HEAD OFFICE
 SUITE #1601-1166 ALBERNI STREET, VANCOUVER,
 B.C. V6E 3Z3, CANADA
 TEL: +1-604-876-1175 FAX: +1-604-876-1085

6 TORONTO / CANADA
HANWA CANADA CORP. TORONTO OFFICE
 UNIT 208, 4789 YONGE ST., TORONTO,
 ONTARIO M2N 0G3, CANADA
 TEL: +1-647-417-9701 FAX: +1-647-417-9705

7 MEXICO CITY / MEXICO
HANWA MEXICANA, S.A. DE C.V.
 PASEO DE LA REFORMA 255 PISO 11-A COL.
 CUAUHEMOC, CUAUHEMOC,
 CIUDAD DE MEXICO, CP 06500, MEXICO
 TEL: +52-55-5525-9934

8 CELAYA / MEXICO
HANWA STEEL SERVICE MEXICANA, S.A. DE C.V.
 AUTOPISTA QUERETARO-IRAPUATO, KM 35+500,
 AV. CELAYA NO.105, PARQUE INDUSTRIAL
 AMISTAD BAJIO, C.P. 38160, APASEO EL GRANDE,
 GUANAJUATO, MEXICO
 TEL: +52-413-158-6600 FAX: +52-413-158-6601

9 SANTIAGO / CHILE
HANWA CHILE LIMITADA
 APOQUINDO 5583, OFICINA 92, LAS CONDES,
 SANTIAGO, REPUBLIC OF CHILE
 TEL: +56-2-2247-5125 FAX: +56-2-2954-1803

Business Supporter

10 BOGOTA / COLOMBIA
ALCECAP S.A.S.
 CALLE 64A NO.97A-50, BOGOTÁ.D.C., COLOMBIA
 TEL: +57-31-8800-1897

Europe, Middle East and Africa

Overseas Offices

1 LONDON / UNITED KINGDOM
HANWA CO., LTD. LONDON BRANCH
 7TH FLOOR, 55 STRAND, LONDON, WC2N 5LS,
 U.K.
 TEL: +44-20-7839-4448 FAX: +44-20-7839-3994

2 JOHANNESBURG /
REPUBLIC OF SOUTH AFRICA
HANWA CO., LTD. JOHANNESBURG BRANCH
 2ND FLOOR, WEST TOWER, NELSON MANDELA
 SQUARE, MAUDE STREET, SANDTON,
 JOHANNESBURG, 2196, SOUTH AFRICA
 TEL: +27-11-881-5966 FAX: +27-11-881-5611

Subsidiaries

3 AMSTERDAM / NETHERLANDS
HANWA EUROPE B.V.
 WTC TOWER-A, LEVEL3, STRAWINSKYLAAN 305,
 1077XX, AMSTERDAM, THE NETHERLANDS
 TEL: +31-20575-2460 FAX: +31-20575-2461

4 VIENNA / AUSTRIA
HANWA EUROPE B.V. VIENNA BRANCH
 WIPPLINGERSTRASSE 34 TOP 174, 1010 WIEN,
 AUSTRIA
 TEL: +43-1-532-01-65 FAX: +43-1-532-01-65-20

5 MILAN / ITALIA
HANWA ITALIA S.R.L.
 04-107, VIA VITTOR PISANI, 15, 20124, MILAN, MI,
 ITALY

6 DUBAI / U.A.E.
HANWA MIDDLE EAST FZE
 DUBAI AIRPORT FREE ZONE, EAST WING,
 BLDG NO.6E, OFFICE NO.549, P.O.BOX 293873,
 DUBAI, U.A.E.
 TEL: +971-4-701-7565 FAX: +971-4-701-7560

7 DUBAI / U.A.E.
HANWA MIDDLE EAST STEEL TRADING L.L.C
 UNIT 125, FIRST FLOOR, THE IRIDIUM BUILDING,
 UMM SUQEIM ROAD, AL BARSHA 1, DUBAI, U.A.E.
 TEL: +971-4-701-7565 FAX: +971-4-701-7560

8 KUWAIT / KUWAIT
HANWA MIDDLE EAST FZE, KUWAIT OFFICE
 1ST FLOOR, OFFICE NO.5, SAWABER 6,
 KHALEED BIN WALEED ST., BLOCK NO.6,
 PLOT NO.6, SHARQ, P.O.BOX 1114, DASMAN,
 15462, KUWAIT
 TEL: +965-2-243-7259 FAX: +965-2-243-7263

9 DAMMAM / SAUDI ARABIA
HANWA MIDDLE EAST FZE, DAMMAM OFFICE
 TEL: +966-13-842-0845 FAX: +966-13-842-0847

10 ISTANBUL / TURKEY
HANWA TURKEY IMPORT EXPORT &
TRADING LLC
 ACIBADEM MAH, CECEN SK, AKASYA A KULE KENT
 ETABI BLOK NO:25A IC KAPI NO:191 USKUDAR,
 ISTANBUL, TURKEY
 TEL: +90-216-771-9314 FAX: +90-216-771-9315

Other Affiliate

11 TORUN / POLAND
SOHBI CRAFT POLAND sp.z o.o.
 OSTASZEWO 57H, 87-148, LYSSOMICE, POLAND
 TEL: +48-56-621-2711 FAX: +48-56-621-2734

Africa



Overseas Processing Plants

CHANG FU STAINLESS STEEL CENTER (SUZHOU) CO., LTD.



NO.7 GUANZHOU EAST ROAD, ECONOMIC DEVELOPMENT AREA, TAICANG CITY, JIANGSU, P.R.CHINA 215400
TEL: +86-512-5359-0800
FAX: +86-512-5358-8942

HANWA STEEL SERVICE (DONGGUAN) CO., LTD.



NO. 42 WEIJIAN ROAD, CHASHAN TOWN, DONGGUAN CITY, GUANGDONG 523391, P.R.CHINA
TEL: +86-769-8182-1000
FAX: +86-769-8182-1001

HANWA STEEL CENTRE (M) SDN. BHD.



PLOT 33, JALAN PERUSAHAAN BUKIT MINYAK, BUKIT MINYAK INDUSTRIAL PARK, 14000 BUKIT MERTAJAM, PENANG, MALAYSIA
TEL: +60-4-507-0033
FAX: +60-4-507-0055

HANWA STEEL SERVICE (THAILAND) CO., LTD.



700/625 MOO 4, 700/630 MOO 5, TAMBOL BAANKAO, AMPHUR PANTHONG, CHONBURI 20160, THAILAND
TEL: +66-38-21-0200
FAX: +66-38-21-0085

PCM PROCESSING (THAILAND) LTD.



AMATANAKORN INDUSTRIAL ESTATE, 700/411 (SOI KHOMAI 11) MOO 1, BAANGAO, PHARNTHONG, CHONBURI 20160, THAILAND
TEL: +66-38-454-381 FAX: +66-38-454-386

HANWA SMC STEEL SERVICE HA NOI CO., LTD.



LOT 47, QUANG MINH INDUSTRIAL ZONE, QUANG MINH TOWN, ME LINH DISTRICT, HA NOI, VIETNAM
TEL: +84-24-3525-1522
FAX: +84-24-3525-1526

PT. HANWA STEEL SERVICE INDONESIA



MM2100 INDUSTRIAL TOWN, BLOCK QQ-5, WEST CIKARANG, BEKASI 17520, INDONESIA
TEL: +62-21-8998-1791
FAX: +62-21-8998-1794

SAN DIEGO VISTA STEEL SERVICE CORPORATION



8753 KERNS STREET, SAN DIEGO, CA 92154, U.S.A.
TEL: +1-619-671-9247
FAX: +1-619-671-9210

HANWA STEEL SERVICE MEXICANA, S.A. DE C.V.



AUTOPISTA QUERETARO-IRAPUATO, KM 35+500, AV. CELAYA NO.105, PARQUE INDUSTRIAL AMISTAD BAJIO, C.P. 38160, APASEO EL GRANDE, GUANAJUATO, MEXICO
TEL: +52-413-158-6600 FAX: +52-413-158-6601

SOHBI CRAFT POLAND sp.z o.o.



OSTASZEWO 57H, 87-148, LYSOMICIE, POLAND
TEL: +48-56-621-2711
FAX: +48-56-621-2734

SOHBI KOHGEI (PHILS.), INC.



SPECIAL ECONOMIC ZONE, LIMA TECHNOLOGY CENTER, LIPA CITY, BATANGAS, PHILIPPINES
TEL: +63-43-981-3830

Company Profile

Corporate Name:	Hanwa Co., Ltd.
President:	Yoichi Nakagawa
Date Established:	April 1, 1947
Paid-in Capital:	¥45.7 billion
Number of Employees: (consolidated)	5,442
Line of Business:	Domestic and Import-Export business in: Steel Products, Steelmaking Raw Materials, Construction Materials, Metals, Scraps, Recycling Materials, Industrial Machinery, Amusement Facilities, Energy, Life Living Materials, Food Products, Lumber, Machinery and Others
Offices:	Osaka Head Office, Tokyo Head Office, Nagoya Branch Office, Kyushu Branch Office, Hokkaido Branch Office, Tohoku Branch Office, Niigata Branch Office, Hokuriku Branch Office, Chugoku Branch Office, Hachinohe Branch Office, Akita Branch Office, Atsugi Branch Office, Shizuoka Branch Office, Wakayama Branch Office, Okayama Branch Office, Fukuyama Branch Office, Shikoku Branch Office, Okinawa Branch Office
Overseas Offices:	(North, South and Central America) New York, Seattle, Los Angeles, San Diego, Vancouver, Toronto, Guam, Mexico City, Celaya, Santiago (Asia) Seoul, Busan, Tianjin, Qingdao, Dalian, Shanghai, Taicang, Chongqing, Wuhan, Fuzhou, Guangzhou, Dongguan, Zhongshan, Hong Kong, Taipei, Kaohsiung, Bangkok, Chonburi, Rayong, Yangon, Hanoi, Ho Chi Minh City, Kuala Lumpur, Penang, Singapore, Jakarta, Surabaya, Manila, Mumbai, New Delhi, Chennai (Europe, Middle East & Africa) London, Wien, Amsterdam, Milan, Kuwait, Dammam, Dubai, Johannesburg, Istanbul (Oceania) Perth
Distribution Centers:	Hanwa Logistics Tokyo Co., Ltd. (Head Office, Funabashi Factory) Hanwa Logistics Osaka Co., Ltd. / Hanwa Logistics Nagoya Co., Ltd. Hanwa Co., Ltd. Tomakomai Logistic Center, Hanwa Co., Ltd. Sendai Logistic Center, Hanwa Co., Ltd. Kyushu Logistic Center
Stock Exchange Listings:	Tokyo Stock Exchange Prime Market
Bank References:	Sumitomo Mitsui Banking Corporation Mizuho Bank, Ltd. MUFG Bank, Ltd. The Sumitomo Trust and Banking Co., Ltd. Resona Bank, Ltd.
URL:	http://www.hanwa.co.jp/

● Osaka Head Office

4-3-9, Fushimi-machi, Chuo-ku,
Osaka 541-8585, Japan
TEL: +81-6-7525-5000
FAX: +81-6-7525-5365

● Tokyo Head Office

1-13-1, Tsukiji, Chuo-ku,
Tokyo 104-8429, Japan
TEL: +81-3-3544-2171
FAX: +81-3-3544-2351

● Nagoya Branch Office

JP Tower Nagoya 35F, 1-1-1, Meieki,
Nakamura-ku, Nagoya,
Aichi 450-6335, Japan
TEL: +81-52-977-3600
FAX: +81-52-977-3630

● Kyushu Branch Office

Taihaku Center Bldg., 2-19-24, Hakata-ekimae,
Hakata-ku, Fukuoka 812-0011, Japan
TEL: +81-92-471-7121
FAX: +81-92-471-7060

● Hokkaido Branch Office

MetLife Sapporo Kitananjo Bldg., 3-1-25,
Kita-sanjo Nishi, Chuo-ku, Sapporo,
Hokkaido 060-0003, Japan
TEL: +81-11-219-7375
FAX: +81-11-219-7376

● Tohoku Branch Office

Sendai Dai-ichi Seimei Tower Bldg., 4-6-1,
Ichiban-cho, Aoba-ku, Sendai,
Miyagi 980-0811, Japan
TEL: +81-22-227-7981
FAX: +81-22-227-7969

● Niigata Branch Office

NISSAY REAL ESTATE Niigata-ekimae Bldg. 7F,
1-4-5, Higashi Oodouri, Chuo-ku, Niigata,
Niigata 950-0087, Japan
TEL: +81-25-255-1777
FAX: +81-25-255-1776

● Hokuriku Branch Office

Urban Place, 18-7, Ushijima-cho, Toyama,
Toyama 930-0858, Japan
TEL: +81-76-432-6313
FAX: +81-76-432-6317

● Chugoku Branch Office

Hiroshima-fukuromachi Bldg., 5-25,
Fukuro-machi, Naka-ku,
Hiroshima 730-0036, Japan
TEL: +81-82-543-2570
FAX: +81-82-543-2561

● Hachinohe Branch Office

Kyoei Hachinohe Bancho Bldg., 9-5, Bancho,
Hachinohe, Amori 031-0031, Japan
TEL: +81-178-73-1170
FAX: +81-178-22-2211

● Akita Branch Office

Akita Square Bldg., 4-1-2, Nakadori, Akita,
Akita 010-0001, Japan
TEL: +81-18-838-1995
FAX: +81-18-838-1996

● Atsugi Branch Office

Nihonseimei Hon-Atsugi Bldg., 1-2-1,
Asahi-cho, Atsugi, Kanagawa 243-0014, Japan
TEL: +81-46-226-9005
FAX: +81-46-227-0121

● Shizuoka Branch Office

Mizunomori Bldg., 14-1, Minami-cho,
Suruga-ku, Shizuoka 422-8067, Japan
TEL: +81-54-654-7080
FAX: +81-54-654-7082

● Wakayama Branch Office

Nankai Wakayamashieki Bldg., 3-17,
Higashikuramaecho, Wakayama,
Wakayama 640-8203, Japan
TEL: +81-73-428-7230
FAX: +81-73-428-7231

● Okayama Branch Office

Morinomachi Grace Office Square 6F,
2-10-12, Shimoishii, Kita-ku, Okayama,
Okayama 700-0907, Japan
TEL: +81-86-212-2001
FAX: +81-86-212-2010

● Fukuyama Branch Office

Meiji-Yasuda Seimei Fukuyama-ekimae Bldg.,
1-25, Nobehiro-cho, Fukuyama,
Hiroshima 720-0064, Japan
TEL: +81-84-973-5701
FAX: +81-84-924-8707

● Shikoku Branch Office

Nippon Life Takamatsu Bldg. 7F, 1-1-5,
Ban-cho, Takamatsu, Kagawa 760-0017, Japan
TEL: +81-87-811-2750
FAX: +81-87-811-2753

● Okinawa Branch Office

Kokuba Bldg., 3-21-1, Kumoji, Naha,
Okinawa 900-0015, Japan
TEL: +81-98-860-9115
FAX: +81-98-861-5516

Company History

April 1947	Company established
December 1948	Tokyo Branch Office opened
November 1952	Nagoya Branch Office opened
April 1957	Tenth Anniversary of founding (established Hanwa Scholarship Foundation)
January 1961	Funabashi Distribution Center opened
October	Becomes designated wholesale trader for Sumitomo Metal Industries, Ltd.
April 1963	Becomes designated wholesale trader for Fuji Steel Works (present Nippon Steel Corporation)
March 1964	Hong Kong Office opened
July 1965	New York Office opened
August 1968	Becomes designated wholesale trader for Kawasaki Steel Corporation
August 1971	Listed in the First Section of the Tokyo Stock Exchange and Osaka Securities Exchanges
February 1974	Nagoya Distribution Center opened
January 1975	London Office opened
November	Nanko Distribution Center opened
April 1976	Hanwa Health Insurance Society established
April 1977	Hanwa welfare pension funds initiated
November 1988	Keiyo Distribution Center opened
August 1994	Vancouver Office opened
April 1995	Tohoku and Kyushu Branch Offices opened
January 1998	Used internal funds to repurchase and retire 100 million shares of stock
May	Sendai Factory opened (present Sendai Logistic Center)
August 1999	Used tender offer to purchase and retire 80 million shares of stock
October 2000	Started E-commerce "hanwa-steel.com" in steel business
April 2002	Hanwa Steel Service Co., Ltd. established
June 2004	Hanwa Steel Service (Thailand) Co., Ltd. established
September 2005	Hanwa Steel Service (Dongguan) Co., Ltd. established
April 2006	Hokkaido Branch Office opened
February 2007	Niigata Branch Office opened
February	Hiroshima Branch Office (present Chugoku Branch Office) opened
April 2008	Hanwa India Private Ltd. established
June	Hanwa Europe B.V. established
September	PT. Hanwa Steel Service Indonesia established
May 2009	Hanwa Co., Ltd. Tomakomai Logistics Center established
October	Kitakanto Branch Office opened
April 2010	Okinawa Branch Office opened
April 2011	Mito Branch Office, Atsugi Branch Office, Tohoku Branch Hachinohe Office opened
October	Shizuoka Branch Office opened Hanwa (Dalian) Co., Ltd. established
December	Hanwa (Qingdao) Co., Ltd., Hanwa Vietnam Co., Ltd. established
February 2012	Hanwa (Beijing) Co., Ltd. established
April	Okayama Branch Office opened Kyushu Logistics Center opened
November	Hanwa Mexicana, S.A. DE C.V. established
February 2013	P.T. Hanwa Royal Metals established
January 2014	Hanwa Co., Ltd. Myanmar Branch established
February	Hanwa Chile Limitada established
July	Hokuriku Branch Office opened
March 2015	Fukuyama Branch Office opened
March 2016	Wakayama Branch Office opened
June	Hanwa Co., Ltd. Manila Representative Office established
June 2017	Kitakanto Steel Center opened in Kitakanto Branch Office
May 2018	Hanwa Steel Centre (M) Sdn. Bhd. acquired as subsidiary
October	Shikoku Branch Office opened
August 2019	Hanwa SMC Steel Service Ha Noi Co., Ltd. acquired as subsidiary
April 2021	Akita Branch Office Opened
November	Hanwa Canada Corp. Toronto Office established
June 2022	Hanwa Daisun established
September	Hanwa Italia S.r.l. established



HANWA CO., LTD.

Osaka Head Office:	4-3-9, Fushimi-machi, Chuo-ku, Osaka 541-8585, Japan TEL: +81-6-7525-5000 FAX: +81-6-7525-5365
Tokyo Head Office:	1-13-1, Tsukiji, Chuo-ku, Tokyo 104-8429, Japan TEL: +81-3-3544-2171 FAX: +81-3-3544-2351
Nagoya Branch Office:	JP Tower Nagoya 35F, 1-1-1, Meieki, Nakamura-ku, Nagoya, Aichi 450-6335, Japan TEL: +81-52-977-3600 FAX: +81-52-977-3630
Kyushu Branch Office:	Taihaku Center Bldg., 2-19-24, Hakata-ekimae, Hakata-ku, Fukuoka 812-0011, Japan TEL: +81-92-471-7121 FAX: +81-92-471-7060
Hokkaido Branch Office:	MetLife Sapporo Kitasanjo Bldg., 3-1-25, Kita-sanjo Nishi, Chuo-ku, Sapporo, Hokkaido 060-0003, Japan TEL: +81-11-219-7375 FAX: +81-11-219-7376
Tohoku Branch Office:	Sendai Dai-ichi Seimei Tower Bldg., 4-6-1, Ichiban-cho, Aoba-ku, Sendai, Miyagi 980-0811, Japan TEL: +81-22-227-7981 FAX: +81-22-227-7969
Niigata Branch Office:	NISSAY REAL ESTATE Niigata-ekimae Bldg. 7F, 1-4-5, Higashi Oodouri, Chuo-ku, Niigata, Niigata 950-0087, Japan TEL: +81-25-255-1777 FAX: +81-25-255-1776
Hokuriku Branch Office:	Urban Place, 18-7, Ushijima-cho, Toyama, Toyama 930-0858, Japan TEL: +81-76-432-6313 FAX: +81-76-432-6317
Chugoku Branch Office:	Hiroshima-fukuromachi Bldg., 5-25, Fukuro-machi, Naka-ku, Hiroshima 730-0036, Japan TEL: +81-82-543-2570 FAX: +81-82-543-2561
Hachinohe Branch Office:	Kyoei Hachinohe Bancho Bldg., 9-5, Bancho, Hachinohe, Aomori 031-0031, Japan TEL: +81-178-73-1170 FAX: +81-178-22-2211
Akita Branch Office:	Akita Square Bldg., 4-1-2, Nakadori, Akita, Akita 010-0001, Japan TEL: +81-18-838-1995 FAX: +81-18-838-1996
Atsugi Branch Office:	Nihonseimei Hon-Atsugi Bldg., 1-2-1, Asahi-cho, Atsugi, Kanagawa 243-0014, Japan TEL: +81-46-226-9005 FAX: +81-46-277-0121
Shizuoka Branch Office:	Mizunomori Bldg., 14-1, Minami-cho, Suruga-ku, Shizuoka 422-8067, Japan TEL: +81-54-654-7080 FAX: +81-54-654-7082
Wakayama Branch Office:	Nankai Wakayamashieki Bldg., 3-17, Higashikuramaecho, Wakayama, Wakayama 640-8203, Japan TEL: +81-73-428-7230 FAX: +81-73-428-7231
Okayama Branch Office:	Morinomachi Grace Office Square 6F, 2-10-12, Shimoishii, Kita-ku, Okayama, Okayama 700-0907, Japan TEL: +81-86-212-2001 FAX: +81-86-212-2010
Fukuyama Branch Office:	Meiji-Yasuda Seimei Fukuyama-ekimae Bldg., 1-25, Nobehiro-cho, Fukuyama, Hiroshima 720-0064, Japan TEL: +81-84-973-5701 FAX: +81-84-924-8707
Shikoku Branch Office	Nippon Life Takamatsu Bldg. 7F, 1-1-5, Ban-cho, Takamatsu, Kagawa 760-0017, Japan TEL: +81-87-811-2750 FAX: +81-87-811-2753
Okinawa Branch Office:	Kokuba Bldg., 3-21-1, Kumoji, Naha, Okinawa 900-0015, Japan TEL: +81-98-860-9115 FAX: +81-98-861-5516

