

HANWA CORPORATE PROFILE

# THE FORCE OF GROWTH

## **Coping with changing times and markets quickly, we make a great contribution to society by satisfying various needs of customers as a “distribution specialist”**

Success in today’s markets demands speed and the ability to meet a broad range of needs. Change is occurring on an unprecedented scale. Only companies that can adapt quickly will survive. Hanwa has experience and accomplishments in the field of “distribution” that span more than half a century.

We know how to build powerful businesses and move quickly in the pursuit of value creation and customer satisfaction.

Dedicated to corporate citizenship, we want our business operations to help make communities and the world a better place to live. This is why we prioritize compliance and other activities that enable us to fulfill our obligation to society.

Through such activities, Hanwa keeps nurturing a corporate culture that will enhance the value and reliability of our company. We aim to make greater contributions by fulfilling our social responsibilities.



# **THE FORCE OF GROWTH**



## President's Message

Hanwa supplies a broad spectrum of products, including steel, metals, scraps, food products, energy, life living materials, lumber, machinery and many other items, to an equally diverse range of customers.

Since our inception, we have based operations on the mission of serving our customers as “distribution specialists.” Year after year, we have used specialized skills and an extensive service network to meet customers’ needs with precisely the right solutions. This skill has made Hanwa earn a reputation as a trading company where customers know they can place their trust, in return receiving outstanding products and services.

As markets become increasingly global, companies in all industries are facing increasingly heated competition in Japan and around the world. The more rapid the pace of change, the more diverse and complex the needs of our customers become. We respond to these demands with value-added products and services, highly specialized ideas, and other forms of support. This allows us to function as each customer’s “best partner” in creating solutions for specific issues. Adhering to this approach is why we can offer trading company logistics with a difference.

The sincere advice and support of all stakeholders forms the basis for all our activities. We place great value on every customer relationship along with the accompanying opportunities. As we pursue more growth and progress, we will retain our devotion to contributing to society by performing functions that are unique to Hanwa while serving as “a trading company known for thinking from perspective users.”

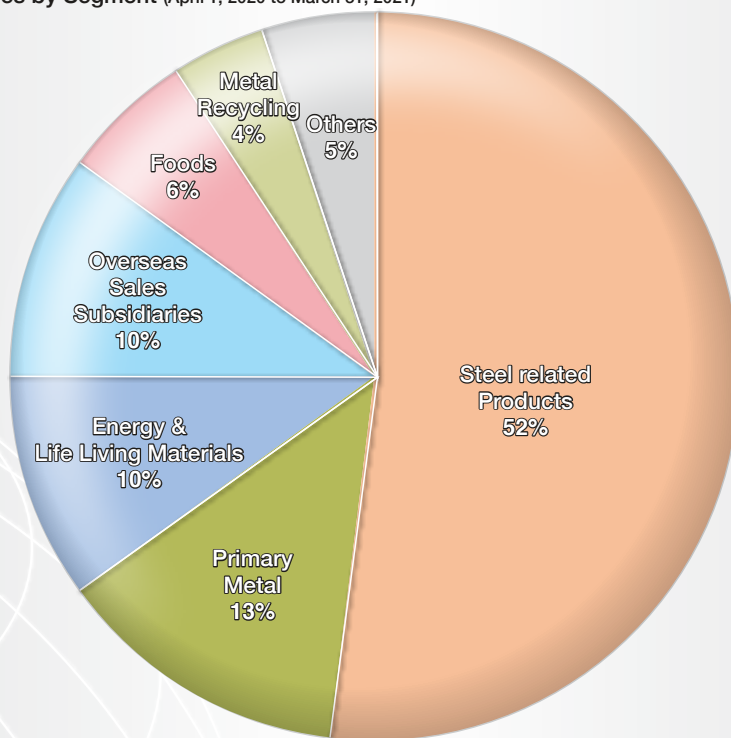


President Hironari Furukawa

## Contents

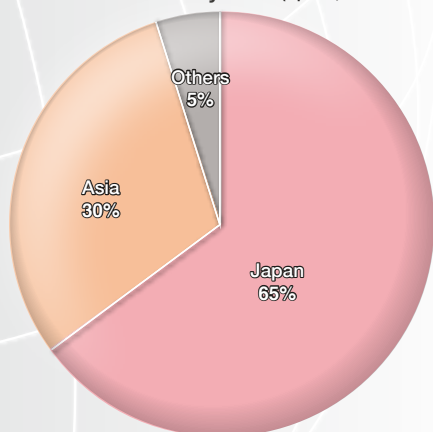
President's Message .....	2
Financial Highlights .....	3
Management Policy .....	5
Business Solution .....	7
<hr/>	
Steel Products .....	9
Steel Bars/Steel Shapes/Ferrous Raw Materials/ Steel Plates/Steel Sheets Sales/ Automotive Steel Products/ Structural Steel Sheets, Pipes & Tubes/ Stainless Steel & Aluminum Sheets/ Wire Products, Special Steel/ Steel Structure Marketing/Project Development/ Thermal-insulation Construction/ International Trade Department/ Steel Sheets/Steel Centers in China/ Steel Centers in Thailand and Indonesia/ Steel Center in America	
<hr/>	
Primary Metal .....	17
<hr/>	
Metal Recycling .....	19
<hr/>	
Food Products .....	21
<hr/>	
Energy/Life Living Materials .....	23
Energy/Life Living Materials/ Synthetic Resins/Lubricant Raw Materials/ Refuse Plastics and Paper Fuel (RPF)/ Metal Interleaving Paper	
<hr/>	
Lumber & Plywood .....	27
<hr/>	
Machinery .....	29
Amusement Equipment/ Industrial Machinery	
<hr/>	
Environmental Activity .....	31
Environmental Management System/ For Preservation of Biological Diversity	
<hr/>	
Corporate Citizenship .....	33
CSR Activities/ Hanwa Scholarship Program	
<hr/>	
Domestic Network .....	35
Network of Domestic Offices and Distribution Centers/ Domestic Affiliated Companies	
<hr/>	
Overseas Network .....	39
Network of Overseas Offices/ Contact with Overseas Bases/ Overseas Processing Plants/ Company Profile/ Company History	

● Composition of Net Sales by Segment (April 1, 2020 to March 31, 2021)

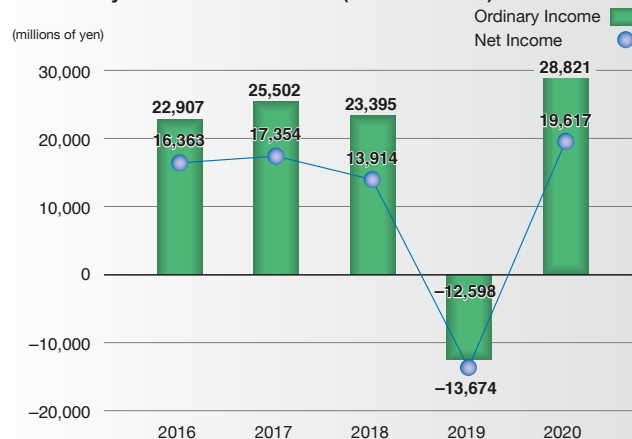


# Financial Highlights

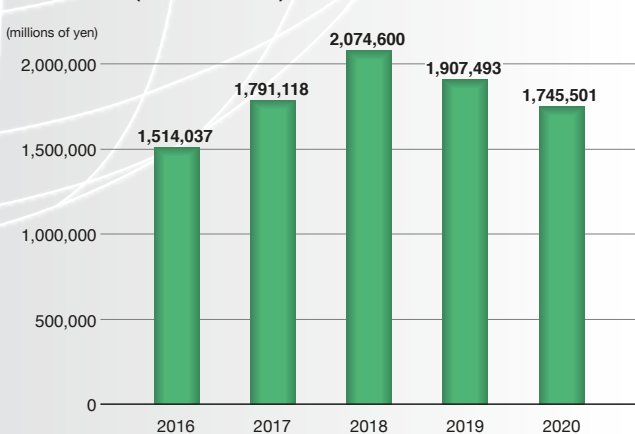
● Composition of Net Sales by Area (April 1, 2020 to March 31, 2021)



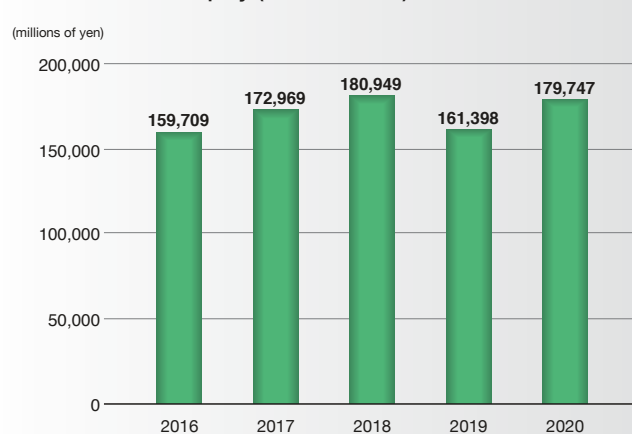
● Ordinary Income/Net Income (Consolidated)



● Net Sales (Consolidated)



● Shareholders' Equity (Consolidated)



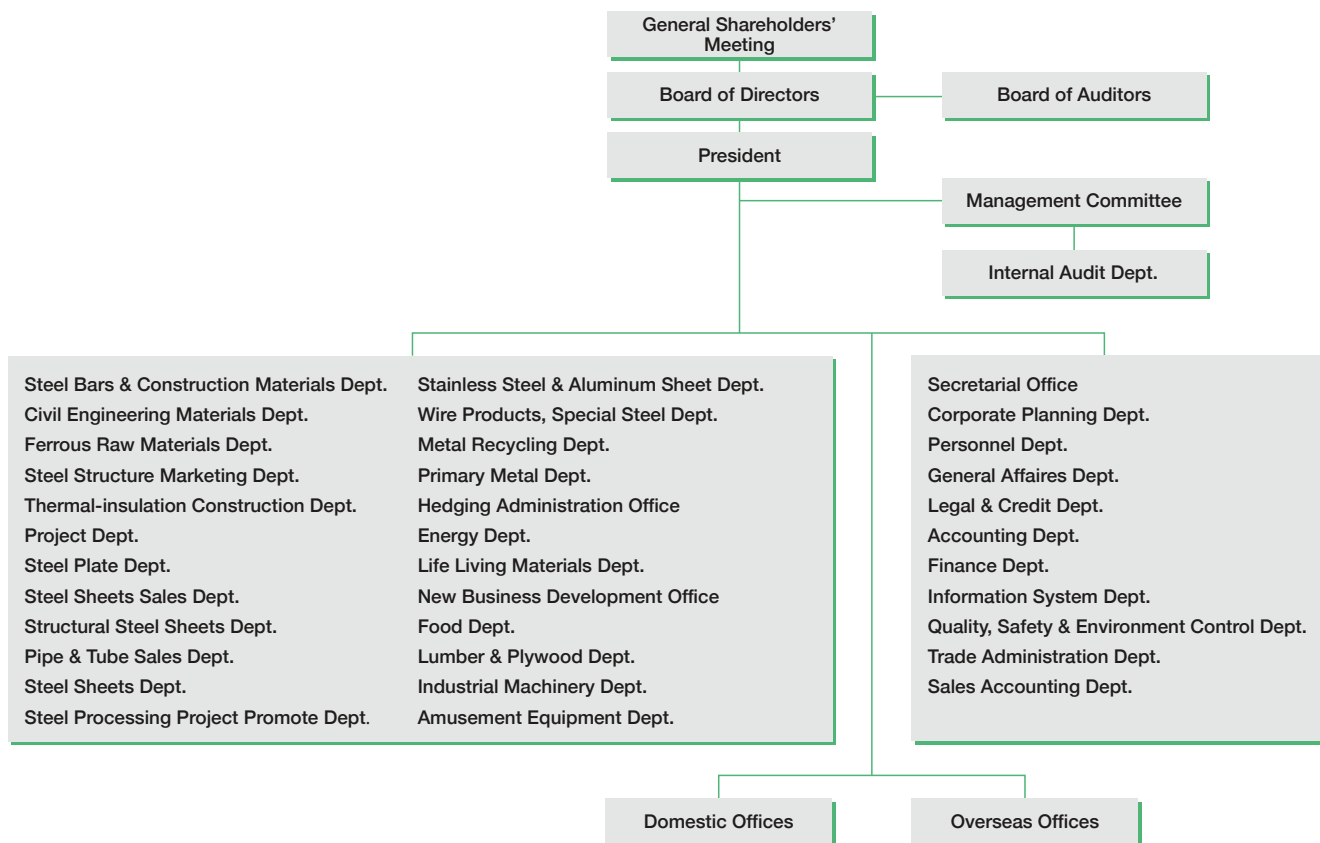
# Hanwa will continue to grow as markets evolve even faster while becoming more diverse and global.

Hanwa has constantly pursued growth in its value as a company. Since our inception in 1947, Hanwa has conducted aggressive business operations based on the “management that takes the offensive” with the goal of further increasing our value as a company. The Hanwa Group has achieved steady growth in our core steel business as well as metals, scraps, food products, energy, life living materials, lumber, machinery and other businesses.

Even in an operating environment that is changing at a remarkable pace, the Hanwa Group remains dedicated to sustained growth as an organization that can accurately meet the needs of customers.

## Organization

Shareholders stand at the top of the Hanwa organization. Representing the shareholders, the directors make decisions involving management policies and strategies. The board of directors is followed by a variety of business units active in many market sectors along with administrative departments. All departments work closely together with the aim of rapidly meeting customers’ increasingly varied needs. This organization facilitates collaboration and allows managers to reach decisions quickly, providing an ideal base for Hanwa’s business operations.



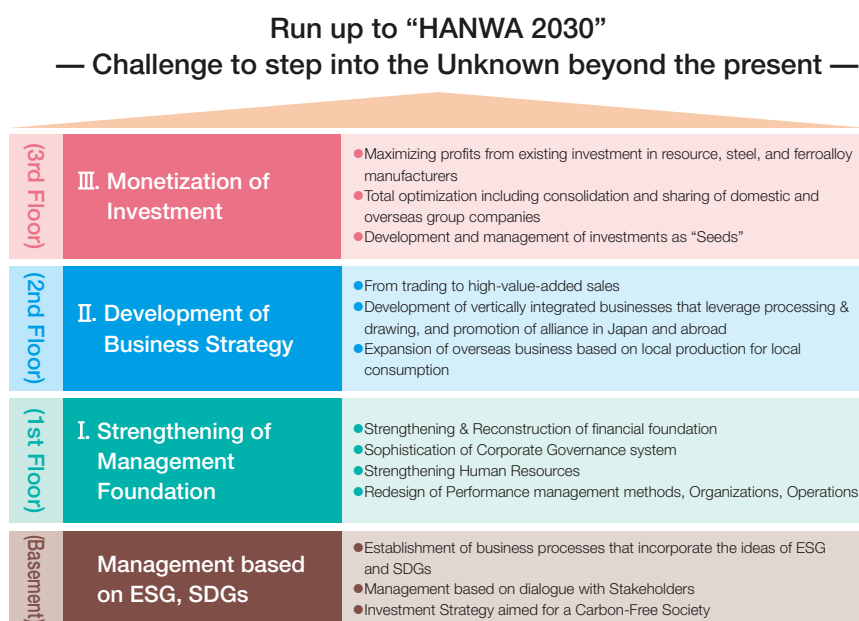
# Build a long-term Growth Strategy and strength a Management Foundation

## Theme of the Medium-Term Business Plan

The theme of the Medium-Term Business Plan from FY2020 to FY2022 is ‘Run up to “HANWA 2030” — Challenge to step into the Unknown beyond the present —’ as the first step toward long-term growth ten years ahead.

We will strengthen corporate foundation and improve medium-to long-term profitability in well-balanced manner and advance initiatives aimed at achieving sustainable growth, based on a three-story structure that comprises “Management based on ESG, SDGs” as basement floor, “I. Strengthening of Management Foundation” as 1st Floor, “Development of Business Strategy” as 2nd Floor and “III. Monetization of Investment” as 3rd Floor.

## Basic Policy on the Medium-Term Business Plan



## Quantitative Targets

Through development of business strategies in each business segment and monetization of strategic investments sown in the previous medium-term business plan, we will aim to increase transaction volume of steel and number of new customers across our group and achieve ordinary income of 30 billion yen. In addition, through financial discipline that emphasizes BS/CF and promoting investments/strengthening management of investments, we will strive to strengthen financial foundation that supports long-term growth by accumulating shareholders’ equity to at least 200 billion yen and achieving Net DER approximately 130%.

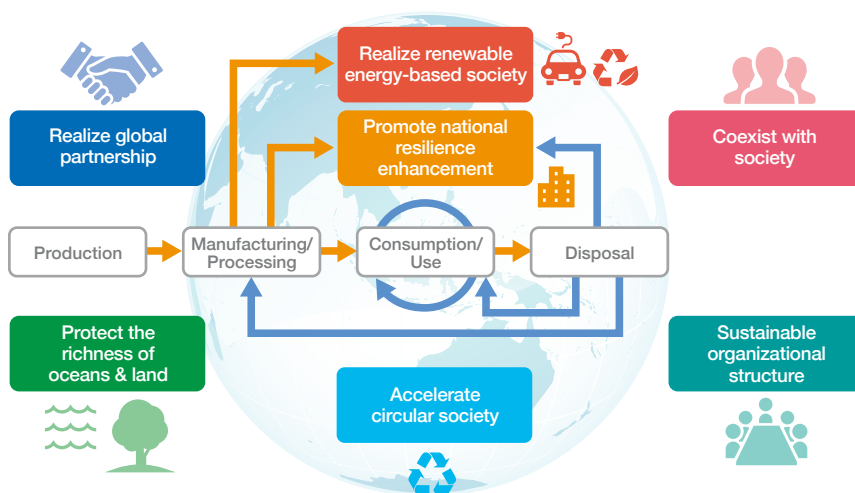
	FY2019 (Actual)	FY2022 (Target)
Net Sales (billion yen)	1,907.4	2,100.0 <sup>*1</sup>
Ordinary income (billion yen)	(12.5)	30.0
Consolidated transaction volume of Steel (million ton)	12.5	15.0
Consolidated number of new customers (in total)	2,666 <sup>*2</sup>	5,000
Shareholders’ equity (billion yen)	161.3	200.0 (or more)
Net DER	161%	approximately 130%
Investment amount (billion yen / in total)	76.8	50.0

<sup>\*1</sup> “Accounting Standard for Revenue Recognition (ASBJ Statement No. 29)” is not applied in calculating Financial Targets for FY2022.  
<sup>\*2</sup> Figures in FY2019 are the number of new customers on non-consolidated basis.

## Management based on ESG, SDGs

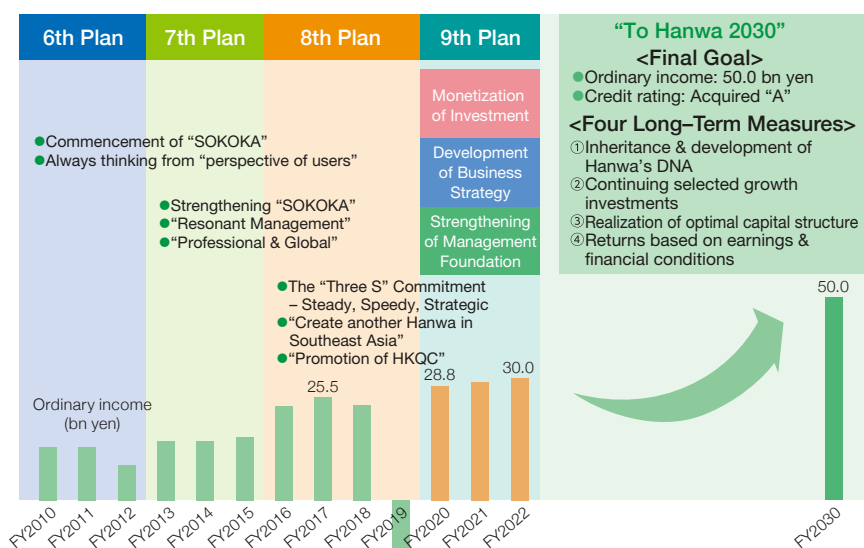
We are so far contributing to realization of a circular society by engaging in scrap and waste recycling business as a distributor, enhancing national resilience through construction materials, and expanding sales of renewable energies. Going forward, we aim to further sophisticate circular supply chain management system through expanding transaction of biomass fuel, parts of battery for vehicle, etc. and achieve sustainable growth and coexistence with environment and society.

Our challenge to new SDGs-integrated businesses × Distribution specialist × SUSTAINABLE DEVELOPMENT GOALS



## Outlook for 2030

Final goal for FY2030, 10 years after the start of this plan, is to earn an ordinary income of 50 billion yen and credit rating of A. We will make constant efforts to achieve further growth based on the four long-term measures – ① Inheritance & development of Hanwa’s DNA ② Continuing selected growth investments ③ Realization of optimal capital structure ④ Returns based on earnings & financial conditions.







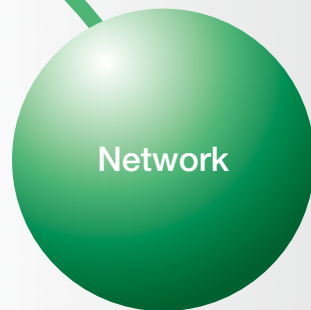
### The nucleus of Hanwa's operations

In this time of rapid changes in our markets, we remain committed to our policy of always putting the customer first. By serving as "distribution specialists," we are dedicated to precisely meeting the needs of customers in order to earn their trust as "a trading company that makes a difference."



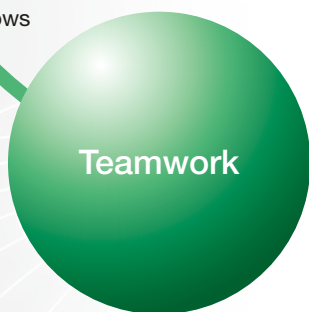
### The footwork required to act with speed and agility

Hanwa firmly believes in positioning markets at the center of its operations. Front-line activities are a source of information and lessons that are available nowhere else. Speed and agility are vital to being in the right place at the right time to gather this knowledge. Recognizing the importance of spending time in the field, Hanwa business professionals use swift footwork to move from one location to another. This constant focus on the essence of business activities allows Hanwa to supply customers with solutions of the highest caliber.



### The foundation for skills in information and sales

Hanwa has a powerful network that spans the globe. In Japan, Hanwa offices and distribution centers work closely together to serve customers. Overseas, we have an extensive network of offices and subsidiaries, particularly in Asia. Skills in information and sales that originate from this network are a critical component of our business operations. With these capabilities, we can meet the expectations of every customer as "distribution specialists."



### A cohesive organization that thrives on teamwork

Conventional general trading companies operate by making each business a largely autonomous unit. Hanwa's operations go beyond this vertical structure. Our business operations benefit from powerful teamwork among all departments and people in our organization. All available resources are used to meet our customers' needs. Teamwork has one more important benefit: the ability to build mutually beneficial ("win-win") relationships by creating the best possible partnership with each customer.

# Business Solution

# “Customers first” is the core business policy of Hanwa. We are in the business of growing with our customers.

## Hanwa’s trading company vision

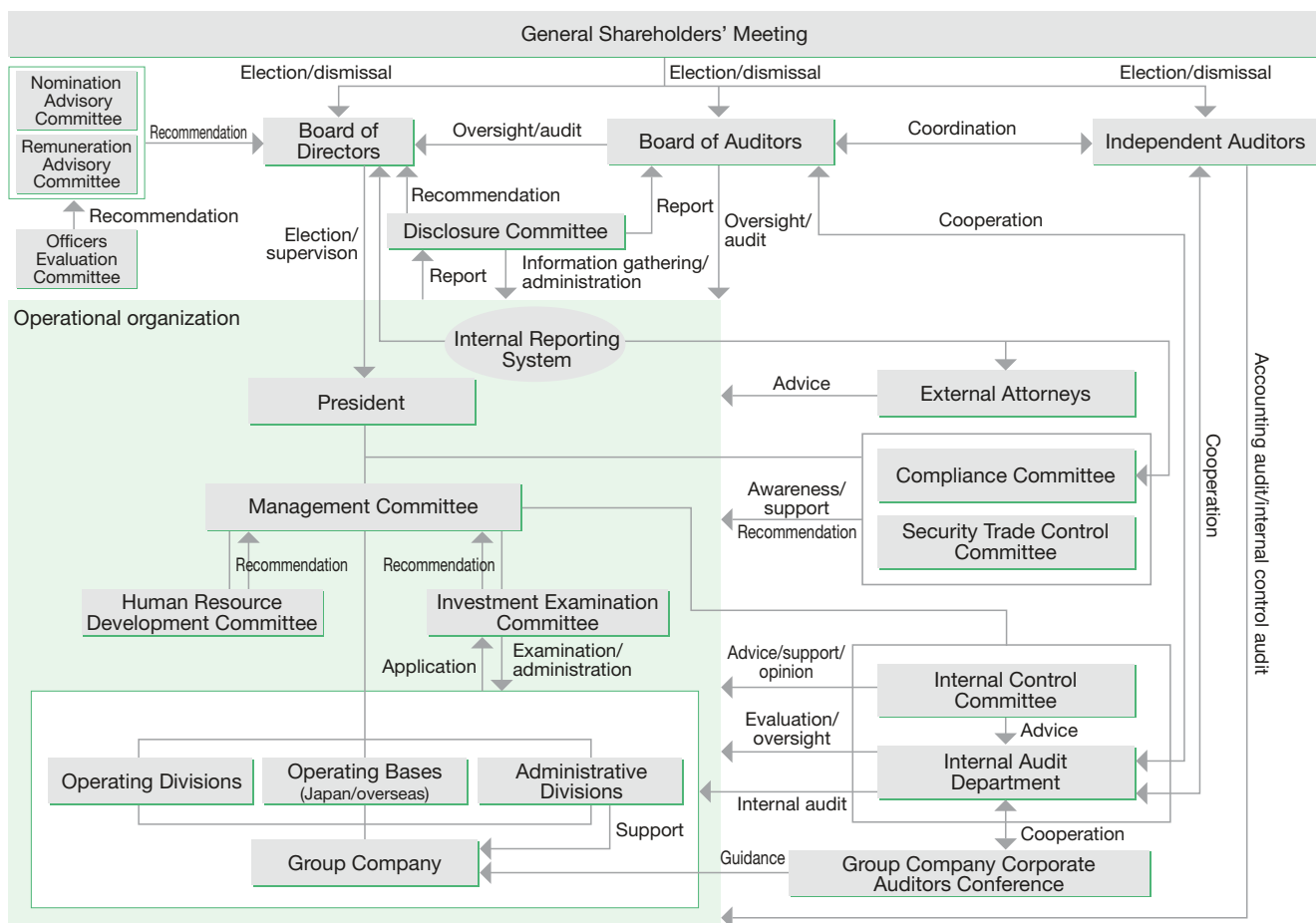
In general, trading companies use a vertically aligned organization to earn profits by serving as an intermediary for business transactions. Furthermore, trading companies invest primarily for the purpose of increasing relationships for earning these intermediary profits.

Hanwa aims to be a different type of trading company. We are dedicated to putting our customers first and prospering with our customers. This is why we use horizontal collaboration that goes far beyond conventional vertical organizational structures. Using this approach produces improvements and ideas that originate from strong partnerships between Hanwa and our customers. Only this type of trading company can function as a “true trading company” that performs a valuable role in society.

## Corporate governance

“Customers first” is the core business policy of Hanwa. This is precisely why we are committed to fulfilling our social obligations as a responsible corporate citizen. Putting customers at the center of our operations requires that we earn a reputation among all stakeholders as a “company that has value.” We will maintain a highly transparent management system that complies with laws, regulations and ethical standards. In addition, we will participate in many community and charitable programs. Our goal is to use a commitment to CSR to make our corporate brand even more respected.

With these goals in mind, we place priority on establishing and operating a system of internal controls to ensure that we do business efficiently and properly.







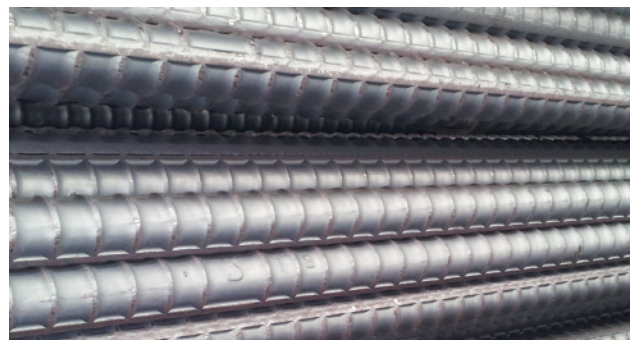
## Steel Products

Steel is Hanwa's major product, accounting for about half of total sales. We sell steel bars, building materials, sheets, pipes, wires, and many other steel products. With this broad lineup, we can meet the requirements of customers in almost any industry.

With some of Japan's largest steel distribution centers and a network of overseas coil centers, Hanwa ranks among the leaders in terms of inventories and steel processing volume. In recent years, off-shore trading has become another source of growth in the steel business.

## Steel Bars

Steel bars, a widely used construction material, have been one of the Hanwa's main businesses since its inception. Steel bars are also a key product for electric arc furnace steelmakers, which transform ferrous scrap into a variety of steel products. Hanwa uses strong ties rooted in mutual trust with steel bar manufacturers to serve as a reliable supplier of rebar to construction companies in all areas of Japan. Furthermore, as a trading company, Hanwa has the largest inventory and processing operations in Japan. This makes it possible to meet customers' needs with speed and precision. Quality and safety management are becoming increasingly important as buildings become taller and incorporate technologies to withstand earthquakes. One result is the growth in demands for even better traceability for steel bars, which are a critical building material. Hanwa uses expertise gained from actual projects to meet these exacting requirements of manufacturers and users. Companies can rely on Hanwa for quick and accurate support that includes new proposals along with stringent quality and safety management.



## Steel Shapes

In the market for H-beams, one of the most widely used types of steel, Hanwa ranks first in Japan in terms of the volume of materials sold. We have many clear competitive advantages. For example, we use high-volume procurement but can also supply small numbers of beams for a customer's just-in-time delivery system. Operating our own processing centers is another valuable advantage. Skills gained from operations in Japan also have earned us high marks in overseas markets for steel shapes.



## ● Ferrous Raw Materials

In recent years, sustainable use of natural resources has been the subject of discussions and studies on a global scale. In Japan, which has few natural resources, steel scrap is an important resource for the steel industry. Many emerging countries near Japan are consumers of steel scrap. As a result, Japan performs an extremely important role as an exporter of steel scrap to other Asian countries. At Hanwa, the ferrous raw materials business is the nucleus of the company's recycling operations. By handling a large volume of steel scrap, Hanwa is contributing to the creation of a global recycling-oriented society.

## ● Steel Plates

Hanwa sells steel plates and sheets for a diverse range of requirements within Japan. End users include manufacturers in shipbuilding, construction machinery, industrial machinery and other sectors. We also supply plates and sheets for building construction, bridges and civil engineering and other domestic demand related projects. The main product is steel plates purchased from Japanese and foreign steelmakers. In addition, we have a growing processed plates and sheets business, which adds value by performing cutting, bending, welding, shortening and other processes.

## ● Steel Sheets Sales

This department sells steel sheet coils and products mainly to steel sheet distributors and processors. Hanwa has its own docks and dockside distribution centers, which include cutting and processing equipment, in the Tokyo, Osaka and Nagoya areas. This provides a solid base for further growth in sales. Distribution centers have many functions. As bonded warehouses, centers can accept imported steel products directly from ships and perform customs clearance. Centers can store large volumes of inventories in response to shift in supply-demand dynamics and market conditions. And centers hold a large selection of products and sizes. These capabilities allow Hanwa to make quick and small rod deliveries of supply steel products with customized dimensions, and provide other services that are fine-tuned to match each customer's requirements.

## ● Automotive Steel Products

Hanwa sells steel products to automakers and a large number of automotive parts manufacturers. This business has been growing steadily thanks to our dedication to locating supply bases near customers and always putting the customer first. At our coil centers in Japan and overseas, which supply many products to the automobile industry, we perform many types of secondary processes. Capabilities include slitting, leveling, blanking and many other processes.

## ● Structural Steel Sheets, Pipes & Tubes

Hanwa supplies many types of materials using steel sheets for housing construction, civil engineering projects and other applications. By selling users' products, we build mutually beneficial relationships with customers. In addition, we develop new materials and highly distinctive products and make extensive use of consulting-based sales. Activities also encompass niche markets, operations one step ahead of new markets and production bases in Asia. Also we perform the business of value-added products of Japanese manufactures mainly in China. Our goals are sustaining growth and building deeper relationships with customers.



## ● Stainless Steel & Aluminum Sheets

To meet the needs of customers, we are constantly working on enlarging our lineup of aluminum products, which extends from aluminum sheets and extrusion molding materials to processed aluminum products. Also we use diverse expertise in creating proposals in our stainless steel business to supply highly functional products with outstanding durability, resistance to corrosion and beauty. Our stainless steel products cover all market sectors, ranging from hot and cold-rolled sheets to shapes, pipes and processed products.

### Highlight

*Hanwa Fellows Engineering (Shanghai) Co., Ltd. and Hanwa Fellows Engineering (Thailand) Co., Ltd.*

Hanwa Fellows Engineering (Shanghai) Co., Ltd. and Hanwa Fellows Engineering (Thailand) Co., Ltd. are engineering firms that perform two roles. One is the preparation of fabrication diagrams for processed steel products like H-beams used to construct buildings. The other is the supervision of fabrication, quality assurance and other activities involving steel products that have been ordered. Both companies are dedicated to supplying the best possible coordination for precisely meeting the needs of customers.

## ● Wire Products, Special Steel

In the wire rods and specialty steel sector, Hanwa handles mother materials, semi-products and finished products. We can accurately identify customers' expanding needs at each stage of the value chain and meet those requirements with our information, distribution and processing capabilities.

As economic globalization progresses, the needs of our customers are becoming even more diverse. This is why our department has professional team devoted exclusively to serving customers in Japan and overseas. We use our global network to accurately and quickly meet customers' needs for both general and specialty products. In addition, we offer many types of support for Japanese customers that are just starting overseas operations. Companies can count on us for assistance in not only the procurement of materials, but logistics, processing and international marketing.

Steel wires and specialty steel are essential to the manufacture of automobiles, construction equipment, machine tools and many other products. The construction industry also uses these materials. Steel wires and specialty steel are rarely used as it is. A variety of processes are needed to make finished wire and specialty steel products. High skill is required to select and propose the steel products for each application, heat treatment requirement and other needs. Individuals with expertise in steel are vital to conducting this business, which demands customized proposals for each customer. This department has an extensive program to foster the development of steel professionals who can serve customers anywhere in the world. With these resources, we supply products in Japan, perform exports, imports, offshore trades and processing trades, and participate in numerous other types of transactions.

### Major products

- Wires Rods, Wires, Wire Products  
Wire rods, deformed bar-in-coils, hard drawn steel wires, special steel wires, stainless steel wires, nails, fasteners, wire mesh, and other all wire products
- Special Steel  
Carbon and Alloy steel for machine structural use, cold finished carbon and alloy steel bar, free-cutting steel, bearing steel, tool steel, stainless steel, titanium, nickel high alloy, forged products, aluminum wire rods, steel bars



## Steel Structure Marketing

Leveraging our strong steel procurement ability, we cooperate with over 100 fabricators (roofing and wall processing companies) all over Japan to carry out contracted construction for our clients, general contractors. To meet the needs of our clients and affiliated companies, we focus on enhancing our contract fulfillment framework. Through cooperation with our 100% subsidiary on-site constructor, SK Engineering Co., Ltd. and a steel engineering company Fellows Co., Ltd., we promote structural steel business, utilizing our unique functionality.



## Project Development

Information and real estate are the key components for the activities of the Project Development Department. Staff members of the department collect and analyze information from many sources worldwide and distribute information, facilitating cooperation among different business units, and assist in developing new business opportunities and in marketing new products. Using abundant experience of real estate transactions and expertise in constructing buildings, we support our customers, devising ways for the effective use of their land and buildings. In this way, our activities deepen the relationships of mutual trust between our customers and us.



## Thermal-insulation Construction

Our Thermal-insulation Construction Department started as an inherited business in July 2018. We perform marketing, design, and construction by a coherent system, working on thermal-insulation projects for facilities requiring temperature management such as refrigerated and cold storage warehouses, fixed temperature warehouses, distribution centers, and food processing factories, using the special knowledge accumulated through a long history, more than half century. Our work is not limited to thermal-insulation alone, but also includes full contracts for interiors, furnishings, and exteriors. As a company with top market share in this industry, we will continue to strengthen the trust that our clients have in our brand.



## ● International Steel Trade

The market for steel products has undergone dramatic changes during the past decade. Rapid globalization as steel demand increased worldwide is the main force behind this change. Hanwa uses its overseas network to conduct steel transactions on a global scale. This allows us to meet rising demand for steel as emerging countries build infrastructure projects, growth continues in the energy sector, and manufacturers of automobiles, ships and many other products consume more steel.

We sell steel to customers around the world. We operate in the United States, Canada, Colombia, Mexico and other countries in the Americas. Operations include China, South Korea and other countries in eastern Asia, Thailand, Singapore, Malaysia, Indonesia, Vietnam, Philippines, Myanmar and other southeastern Asian countries, and southern Asia, chiefly India. In the Middle East, we have customers in the U.A.E., Saudi Arabia, Kuwait and other countries. In Europe, we sell steel in the United Kingdom, Germany, Italy, the Netherlands and many other countries.

Growth in demand for Japanese steel products is particularly strong for applications involving environmental protection or the use of advanced technologies.

Our staff with many years of international business experience are constantly using our global network to gather information about the economy, the steel market and other important subjects. Using this information allows us to supply customers with valuable information and ideas for solutions in addition to selling them steel products.

### Major products

- Automotive products  
Steel sheets, stainless steel, pipes, others
- Transport containers  
Steel sheets, stainless steel, others
- Home appliances • OA • Motors  
Steel sheets, stainless steel, others
- Shipbuilding  
Steel plates, steel shapes, others
- Construction machinery • Industrial machinery  
Steel plates, others
- Civil engineering • Construction materials  
Steel shapes, pipes, steel sheets, others
- Energy  
Pipes, steel plates, stainless steel, steel shapes, others
- Others  
Rails, high-performance materials, others





## Steel Sheets

Hanwa supplies steel sheets to manufacturers of electrical machinery, automobile parts and many other products. To increase overseas production and sales activities, many manufacturers in Japan that use steel sheets have moved production to other countries in recent years. We long ago established a unified organization for steel sheets that covers Japan and overseas markets to serve these manufacturers.

Our operations for steel sheets encompass many areas and activities in order to maintain a reliable supply of steel products for our customers. We sell this steel primarily to the overseas factories of Japanese manufacturers of home appliances, office equipments, automobile parts and other products. We have an extensive supply network for steel sheets in China. Seven coil centers in southern, eastern and other areas of China process steel sheets to meet the requirements of users.

In Japan, we provide services that precisely meet the requirements of customers. With operations include Hanwa Steel Service in Shiga prefecture and a large number of cooperating centers of partner companies. We have earned a reputation for excellence by supplying customers with services that accurately reflect their needs and are closely linked to each production facility.

### Major products

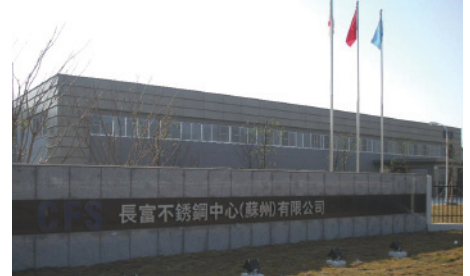
All types of steel sheets (pickled, cold-rolled, hot-dip coated, electroplated, and others), all types of colored steel sheets (colored, PVC and others), stainless steel sheets, specialty steel sheets, electrical steel sheets, steel sheet products, and others



## Steel Centers in China

### Chang Fu Stainless Steel Center (Suzhou) Co., Ltd.

Chang Fu Stainless Steel Center cuts and processes many types of steel, including ordinary steel, surface-treated steel sheets, stainless steel sheets and other materials. Established in 1995, this coil center now has a monthly processing capacity of 25,000 tons. Most steel is sold to subsidiaries of Japanese companies located in the Shanghai and Suzhou area. The steel center supplies steel sheets used to make copy machines, home appliances, automotive parts and building materials. Factory floor area and processing capacity were both approximately doubled when Chang Fu moved to a new building in 2008.



#### Equipment

Slitter processing lines .....	3
Leveler processing line .....	1
Mini-leveler processing lines .....	7
Shearing machines .....	4

### Hanwa Steel Service (Dongguan) Co., Ltd. (HSSD)

The city of Dongguan in Guangdong province is China's largest area of factories involved in the processing trade. Established in 2005, this company officially started operating in 2006. HSSD has a monthly processing capacity of 14,400 tons. Since then, equipment has been added to meet a broader range of customer needs in market sectors extending from office equipment, audio-visual devices and information technology products to home appliances and automobiles.

The company occupies a site of 66,413m<sup>2</sup> but the factory uses only 15,100m<sup>2</sup> and the administrative building 3,300m<sup>2</sup>. This provides ample space to add new businesses that are associated with conventional coil center activities. HSSD plans to begin considering its options for growth several years from now.



#### Equipment

Slitter processing lines .....	2
Mini-slitter processing lines .....	4
Leveler processing line .....	1
Mini-leveler processing lines .....	2
Down shearing machine .....	1

### Dongguan Tetsuwa Metals Co., Ltd.

Dongguan Tetsuwa Metals is a steel processing center that was established in 1995 as a joint venture. This company supplies quality steel sheets to customers in southern China. Operations are guided by a dedication to supplying steel sheets to customers with even greater speed and reliability. In 2003, Dongguan Tetsuwa received ISO9001 quality management and ISO14001 environmental management certification. The company has earned the trust of customers due to its outstanding quality management system and its flexibility to match customers' delivery schedules. The steel processing center performs shearing operations for coated, magnetic, cold-rolled, stainless steel and other types of steel sheets. Steel supplied by this company is used to manufacture components for audio-visual products, motors, printers, copy machines, computers and other products.



#### Equipment

Slitter processing lines .....	2
Mini-slitter processing line .....	1
Leveler processing line .....	1
Mini-leveler processing lines .....	2
Down shearing line .....	1



## Steel Centers in Thailand and Indonesia

### Hanwa Steel Service (Thailand) Co., Ltd. (HSST)

The strong desire of many companies to create a coil center in Thailand led to establish Hanwa Steel Service (Thailand) in 2004. Operations began in 2005. Completion in 2008 of work to expand operations doubled monthly processing capacity to about 10,000 tons. Major customers are Japanese manufacturers of electrical appliances and automotive parts. The company takes pride in its commitment to the motto of "sincerity leads to reflection, reflection leads to improvements, improvements lead to trust, and trust drives growth." Everyone is dedicated to providing customers with the same thoughtful and reliable services as at Hanwa's coil centers in Japan.



#### Equipment

Slitter processing lines .....	2
Leveler processing line.....	1
Mini-leveler processing lines.....	2
Shearing machines.....	3

### PCM Processing (Thailand) Ltd.

This company was established in 1999 as a joint venture. As a coil center specializing in colored steel sheets, PCM Processing (Thailand) is dedicated to three corporate policies: sharing satisfaction among everyone; acting quickly; and safety first. Based on these policies, the company has a production system that maintains high quality. Cutting capacity is about 2,200 tons per month. In 2007, the company installed a powder coating (PCM) line with a monthly capacity of 200 tons. By using expertise as a comprehensive processor of colored steel panels, PCM Processing (Thailand) plans to become an even more valuable partner for manufacturers of refrigerators, microwave ovens and other home appliances.



#### Equipment

Slit leveler processing lines.....	2
Sheet slitter processing line.....	1
Shearing machine.....	1

### PT. Hanwa Steel Service Indonesia (HSSI)

Established in Indonesia in 2008 as a wholly owned subsidiary of the Hanwa Group, HSSI is a coil center in an industrial park near Jakarta where many Japanese companies have factories. HSSI serves primarily manufacturers of home appliances and parts for motorcycles and automobiles. The company conducts hot-rolled coil, cold-rolled coil, electrolytical galvanized steel coil, galvanized iron steel coil and pre-coated colored coil and to process and sell stainless steel sheets. Operations are slated to begin in 2009 with monthly capacity of 7,000 tons for the company's first phase and 7,500 tons in the second phase in 2011. HSSI is determined to become a coil center that can earn the trust of customers by providing services that precisely match their needs.



#### Equipment

Slitter processing line.....	1
Mini-slitter processing line.....	1
Leveler processing line.....	1
Mini-leveler processing line .....	2
Shearing machine.....	3

## Steel Center in America

### San Diego Vista Steel Service Corporation

Established in San Diego, USA in 2009 as a wholly owned subsidiary of Hanwa Group, is the first coil center in USA.

This company has a monthly processing capacity of 7,000 MT, and plans to engage in processing and sales of steel sheet for Japanese manufacturers of home appliance in California and Mexico. It is trying hard to maintain customer confidence, putting high priority on safety.



#### Equipment

Slitter processing line.....	1
Mini-leveler processing line .....	1
Shearing machine.....	1



## Primary Metal Department-1 (Electronics and chemical raw materials)

Department-1 handles a wide range of materials and ingots such as recycled precious metals from urban mining, nickel, cobalt, lithium, metallurgical silicon and chemical raw materials. As demand for EV (electric cars) continues to grow, we supply nickel, cobalt, silicon, and other chemicals used in the on-board rechargeable battery industry, as well as precious metals, vanadium, rare earth metals used for catalysts and magnets which require a more diverse range of raw materials.

Also, our users are not limited to Japan only, but we do an increasing amount of business with overseas clients. Managing import, export, and third-country trade, using LME and LBMA futures hedge transactions, and utilizing inventory in local areas where there is demand, we purchase raw materials all over the world while simultaneously providing stable supplies.

### Major products

Ingots of nickel, cobalt, lithium, palladium, platinum, and rhodium (as well as recycled materials from urban mining including these precious metals), vanadium, silicon, rare earth metals, magnesium, and chemical materials, including basic chemical materials such as caustic soda

## Primary Metal

We trade precious resources such as nickel ingots, ferroalloys of chromium, silicon ore and manganese. We are directly sourcing from producers in Russia, South Africa, Kazakhstan, India, Malaysia, Indonesia, Mexico and other countries, specially from producers of China, where both supply and demand are immense. In combination with investment and financing functionality, we promote the expansion of “distinctive resources investment”.

### Highlight 1 *MM Metal Recycling B.V.*

In June 2016, MM Metal Recycling B.V. was founded in Moerdijk, North Brabant, Netherlands as a joint venture with Mitsubishi Materials Corporation. Europe is the largest source of gold and silver dregs (E-Scrap) generated, and this company acts as a center for performing operations such as acceptance, inspection, and sample collection of these materials.



### Highlight 2 *Waterberg JV*

JOGMEC (Japan Oil, Gas and Metals National Corporation) discovered platinum group metal deposits in South Africa in 2011 through cooperative investigation with Platinum Group Metals, a Canadian mining company, and the business plan was considered based on the research results under the name of Waterberg Project. In 2017, Impala Platinum Holdings Limited, the second-largest producer of platinum by volume in South Africa, joined as a development partner, and JOGMEC's interests were taken over by a Japanese company. Hanwa won these rights by bidding in March 2018. Alongside the start of production of platinum group metals such as palladium and platinum at this site, Hanwa will be carrying out sales of these products.





### Highlight 3 Bacanora Lithium

Once-in-a-century innovations such as electrically motorization (EV) and automatic driving are currently underway within the automobile industry. One of the key elements of these developments is rechargeable batteries, and there are especially high expectations for lithium ion batteries. In the midst of these conditions, Hanwa has been handling the raw materials essential for rechargeable battery manufacturing since the 1990s. In addition to nickel and cobalt, we are also focusing on lithium in earnest and investing in this project for that purpose.



## Primary Metal Department-2 (Steel raw materials)

Department-2 focuses on expanding trade in raw-materials as well as semi-finished and finished products with customers mainly in the steel industry. We contribute to the sustainable development of the social and economic infrastructure by providing a stable supply of metals available only in limited regions, such as nickel, chromium and manganese, to customers not only in Japan but also around the world; and by distributing high-value-added steel products, manufactured using our own metal resources, to our downstream customers. We also deal directly with resource majors in Indonesia, South Africa, India, Australia, Malaysia and other countries, building up a unique and stable two-way business structure for raw-material supply and products purchasing. This structure serves industries such as stainless steel, special steel, carbon steel and castings. In this way Hanwa deploys seamlessly integrated operations from the upstream side to the downstream side.

#### Major products

Nickel pig iron, semi-finished stainless steel products, chromium ore, manganese ore, iron ore, coal, ferrochromium, ferrosilicon, silicomanganese, metallic manganese, ferrovandium, ferroniobium, ferrotitanium, nickel / cobalt / manganese chemical raw materials, sulfuric acid, etc.

### Highlight 4 Samancor

Since we are investing in Samancor, one of the major chromium businesses in South Africa, both directly and indirectly through Japan South Africa Chrome Co., Ltd., a joint venture with JOGMEC (Japan Oil, Gas and Metals National Corporation), we are the largest individual stockholder. With an integrated value chain extending from mining to smelting, Samancor is one of the world's largest consistent supplier of chromium resources. We plan to increase sales in China, Southeast Asia, North America and Europe. In case of emergency, this entitles us to the right to supply a maximum of 400,000 tons of ferrochrome per year to Japanese customers.



### Highlight 5 OM Holdings

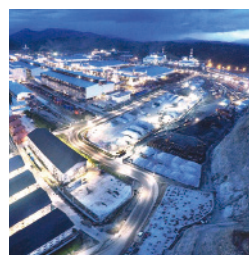
Hanwa has made an investment in OM Holdings (OMH), a company listed on the Australian Stock Exchange that owns a manganese mine in South Africa and Australia. A subsidiary of OMH has constructed a ferrosilicon and ferromanganese plant in Sarawak in Malaysia that is powered by clean, infinite and inexpensive hydroelectricity. Hanwa plans to establish frameworks for the consistent supply of ferroalloys to companies worldwide as a strategic partner.



### Highlight 6

PT. Indonesia Guang Ching Nickel & Stainless Industry/  
PT. Indonesia Tsingshan Stainless Steel

Due to its many years of accomplishments, Hanwa has been participating since 2014 in a nickel pig iron project in Indonesia with China's Tsingshan Steel Group, the world's largest producer of stainless steel. We carry out further expansion of our supply system for products ranging up to stainless steel semi-finished products, to customers in the stainless steel and special steel industries.



### Highlight 7

QMB New Energy Materials Co., Ltd.

In response to the sudden rise of the global EV (electric vehicle) industry, we have been participating in a nickel and cobalt chemical raw materials manufacturing project since 2018, utilizing the abundant nickel resources and existing infrastructure in Indonesia developed for the stainless steel raw materials project with Tsingshan Steel Group. This project includes both CATL, the world's largest electric vehicle rechargeable battery manufacturer in China, and GEM, a battery materials manufacturer which is also China's largest recycler. Through this project, we will grow alongside the global scale expansion of the electric vehicle industry.





# Metal Recycling

Hanwa is one of the first companies in Japan to establish a non-ferrous metals and specialty metals recycling business. Operations involve mainly aluminum, copper, zinc, lead, stainless steel and other metals where demand is substantial in Japan. We have solid positions in these markets, backed by expertise in organizing business on a global scale. In our recycling business of aluminum cans, we fully utilize expertise in collection, inventory and supply activities to aluminum rolling plants. We actively promote installation of new facilities and expansion of our base locations.

## Metal Recycling Department-1 (Copper and aluminum scraps)

Metal Recycling Department-1 handles recycling materials of copper and aluminum, and products of the same metals.

Hanwa started its copper and aluminum recycling business in the 1950s. Since then, we have been a supplier of scraps as high-grade alternative materials at a variety of users worldwide. We have also helped protect the global environment, that is one of our largest theme.

Going beyond traditional trading activities, our group company have our own processing facilities. We recycle aluminum cans, extrusion and other materials to meet the demands of our customers. For export of non-ferrous products from Japanese mills, we mainly handle aluminum and copper, to China, Hong Kong, and Taiwan. However, we are also proactively expanding our sales area into Southeast Asia, India, and the Middle East and expanding our sales to new materials as well.

### Major products

Copper and aluminum scraps

### Highlight 1 PT. Hanwa Royal Metals

Hanwa established PT. Hanwa Royal Metals in 2013 in Indonesia by combining Hanwa's non-ferrous metal recycling operations with those of the Indoprima Group, a large Indonesian corporate group. In Indonesia, where the recycling environment is under development, we are the only Japanese company with its own recycling facility. With this company, Hanwa can provide materials and services just as in Japan.



### Highlight 2 Seiki Metal Co., Ltd.

In October 2014, Seiki Metal Co., Ltd. became a Hanwa's subsidiary company. This company has an aluminum can recycling facility in the Tokyo area and plants in Nagoya and Oita for the production and sale of aluminum deoxidizer that is sold to blast furnace steelmakers. Combining the functions of a trading company and manufacturer, they will make it possible to achieve greater customer satisfaction.





## Metal Recycling Department-2

(Zinc, lead, tin, stainless steel scraps)

Metal Recycling Department-2 handles white metals such as lead, the main raw material for batteries of automobiles, and tin for solder, which is a crucial material for electronic components. In addition, we are supplying byproducts and secondary raw materials, produced by non-ferrous producers, to non-ferrous manufacturers in domestic and overseas, in accordance with the Basel convention and other regulations.

On the other hand, we are also engaged in recycling stainless steel, special steel, titanium, and heat-resistant alloys. Handling from stainless steel you encounter in daily life to the titanium and heat-resistant alloys used in the aerospace field, we focus on recycling scrap materials such as Ni, Cr, Mo, Co, W, and Ti. Not only trading them, but we also add value by collecting, sorting, and processing them in cooperation with Hanwa Group subsidiaries, to sell these precious recycled materials to various manufacturers.

### Major products

Ingot and scrap of Zinc, lead, and tin, scrap of stainless steel, and high-performance metal materials

### Highlight 1 Showa Metal Co., Ltd.

In April 2010, Showa Metal, Japan's largest recycler of rare metals, formed a specialty metals business with Hanwa. Showa Metal collects and sorts nickel scrap at its facilities in Kawasaki. This company has a titanium scrap recycling facility in Naoetsu, Niigata prefecture that can meet the high-quality standards of its customers. From both locations, it supplies materials with outstanding quality and substantial added value.



### Highlight 2 Hanwa Metals Co., Ltd.

Hanwa established this subsidiary in 2011 to operate a stainless steel scrap collection and storage facility in the South Port District of Osaka. This yard allows scrap to be easily loaded on large vessels to maintain consistent supply of recycled materials to stainless steel and special steel mills worldwide.



### Highlight 3 Nikko Kinzoku Co., Ltd.

Nikko Kinzoku is a special metals and non-ferrous scrap recycling company that became a member of the Hanwa Group in October 2015. No other company in Japan has more knowledge and experience in purification of low-grade materials. With its expertise in sorting and quality management, Nikko Kinzoku provides customers with the best possible recycling system.





## ● Food Products

Japan's marine product imports have been declining steadily. In response, Hanwa established a subsidiary to develop new domestic consumer markets. Leveraging its raw material procurement prowess and know-how in food processing overseas, Hanwa plans bring in high quality processed marine products from China, Thailand, Vietnam and other countries for actively marketing in Japan's consumer markets.

Hanwa has also established a marketing subsidiary in the U.S. as a part of its global sales network that goes beyond Japan. The U.S. subsidiary will focus on developing the American market.

Aquaculture is accounting for a growing share of marine products worldwide. Hanwa has established a subsidiary in Chile that will increase the procurement of farmed salmon and develop sales channels throughout South America. Consumers are becoming increasingly concerned about food safety. To supply food products with consistently high quality, Hanwa personnel are directly involved with procurement, processing and sales activities. These rigorous production oversight and quality assurance measures mean that consumers can purchase these products with confidence.

### Major products

Salmon, prawns and shrimp, octopus, mackerel, horse mackerel, herring roe, capelin, crab, chicken, others

## Food Products

Food Dept. is Japan's largest importer of many types of seafood. In recent years, to enter more markets, this business established subsidiaries in Europe and South America for purchasing activities. For sales activities, We also established subsidiary companies in the United States and Japan.

For products made at overseas partner factories, there is a powerful quality assurance framework in which Hanwa employees oversee every step from the procurement of ingredients to processing and sales.

### Highlight 1

*Targets food market sectors in Japan that are new to Hanwa*

#### Hanwa Foods Co., Ltd.



Established in 2012, Hanwa Foods is engaged primarily in the wholesale distribution of processed marine products. All products have outstanding quality because Hanwa oversees every aspect of production from procurement through processing.



**Highlight 2**

**Sales activities in North America**

**Seattle Shrimp & Seafood Company, Inc.**



This company was established in 2006 for the purpose of selling marine products in North America. While working with Hanwa offices around the world, this company procures high-quality marine products for distribution to supermarkets and wholesalers in North America.

<http://seattleshrimp.com>



Exhibition in Boston Seafood Show

**Highlight 3**

**Building stronger procurement channels worldwide**

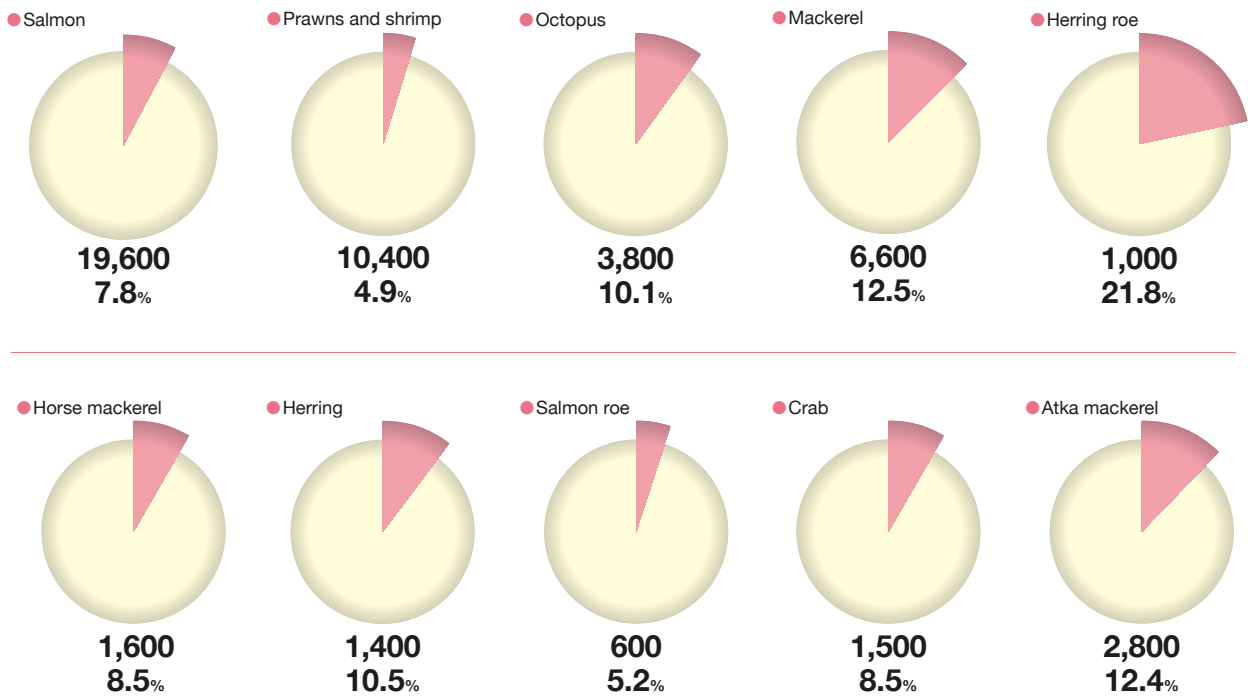
Established in the Netherlands in 2008, HANWA EUROPE B.V. purchases marine products from suppliers in Europe, Western Asia and Africa. In 2014, Hanwa established HANWA CHILE LIMITADA for the procurement of farmed salmon and the location of more products from South America to distribute.



**Highlight 4**

**Our share of Japan's seafood market (2020)**

(Unit: tons/years)







## Energy/Life Living Materials

In the energy business, we focus on supplying biomass energy and recycled energy to a wide range of industries, including the power-generation, steel, chemical and paper-and-pulp sectors nationwide. We also deal with base oil, urea water, additives, LNG, and petroleum products such as heavy fuels, gas oil, kerosene and bunker oil, and import and export used papers.

In the life living materials business, we handle plastic products such as raw materials for synthetic resin and polyethylene products such as shopping bags and garbage bags overseas.

## Energy

Hanwa supplies a wide range of energy products to consumers nationwide.

As energy sources diversify, we are expanding our handling of PKS and wood pellets for biomass power producers. In 2019 we chartered a dedicated biomass energy transport ship to ensure stable supply. We are also focusing on building up a supply system for recycled energy such as RPF, used tires and waste wood materials. In the industrial energy business, to meet the needs of consumers, we charter barges and have established logistical bases at Tomakomai, Funabashi and Osaka Sakurajima. In addition, we provide BCP support for emergency energy deliveries.

In the paper business, we focus on the recycling business such as domestic sales of used papers and overseas trade focusing on ASEAN countries.

### Main products

Industrial energy (heavy oil, kerosene, LPG, LNG, industrial gas), transportation energy (bunker oil, gasoline, diesel), lubricating oil, biomass energy (PKS, wood pellets), recycled energy (recycled heavy oil, RPF, discarded tires, discarded building-material chips), raw materials for lubricating oil (PAO, PIB, esters), additives, chemicals, paper products (cardboard boxes etc.), used paper (bottom or top parts of cardboard boxes etc.), etc.



Completion of biomass fuel transportation vessel Midori

\*Images above: PKS on the bottom left, Wood pellet on the bottom right

## Highlight 1 *Energy for Ships—Bunker Fuels*

The shipping industry is facing a huge change, after the International Maritime Organization (IMO) changed its sulphur limit regulation from 3.5% to 0.5% as of 1 January 2020.

Under such circumstances, our bunker team has been preparing and has been improving its global supply network, in order to ensure stable prices and product quality, especially in Asia-Pacific ports.



## Highlight 2 *Recycled Energy*

We import biomass energy (Ex: PKS, wood pellets)—expected as a promising renewable energy source—for biomass power generators.

We are also focusing on recycling heavy oils, scrap tires, recovered paper, and RPF made from waste paper and waste plastic products.



## ● Life Living Materials

Our life living materials business leverages our global procurement capabilities, which are centered on Asia, as well as our own logistics functions, which allow small-lot production of a wide variety of products, to sell life living materials to retailers nationwide. Our strength is our ability to provide a one-stop service that begins with product development and covers everything from raw-material feed to manufacturing, quality and inventory management, and delivery, and we offer a broad line-up of life living materials.

And through aggressive investment in overseas manufacturing plants that we operate jointly with partners and in logistics systems to strengthen our value chain, we are expanding our business even as competition intensifies.

Moreover, with an eye to realizing a carbon-free society, we are working to strengthen ties between the business and our synthetic resins business by expanding sales of environmentally-friendly products.



## ● Synthetic Resins

Our synthetic resins business sells mainly general-purpose resins such as polyethylene, polypropylene, and polystyrene to both domestic and foreign customers. Overseas, we are intent on strengthening the feed business, and are therefore being proactive in endeavoring to sell synthetic resins to manufacturing plants operated by our life living materials business.

And as we move toward the realization of a carbon-free society, we are striving to handle bioplastics and other feedstock for recycling, and reduce use through functional resins.

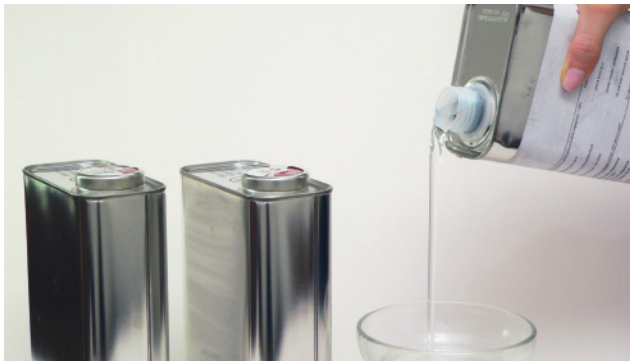


Various types of synthetic resin



## Lubricant Raw Materials

Hanwa sells base oils and additives that are needed for the production of lubricants. As the requirements for lubricant performance continue to become more demanding, manufacturers of lubricants are seeking raw materials of increasingly higher quality. Hanwa is working hard on meeting these needs by supplying high-performance synthetic lubricant ingredients like PAO, PIB and esters.



## Refuse Plastics and Paper Fuel (RPF)

Hanwa is deeply involved in the field of transforming waste materials into a source of energy as part of its recycling business. One activity is Refuse Plastics and Paper Fuel (RPF), which is attracting much attention as a substitute for fossil fuels like petroleum and coal. Effectively reusing waste materials contributes directly to protecting the global environment. Many industries, including paper, cement and lime, use RPF as one source of thermal energy.



## Metal Interleaving Paper

Hanwa exports and sells in Japan metal interleaving paper that is used by rolling mills that process stainless steel, copper, aluminum and other metals. Manufacturers use this paper during the rolling process and for packaging when shipping their products. Metal interleaving paper prevents surface scratches and clouding that can occur when two metal surfaces rub directly against each other.

Metal interleaving paper has higher quality than ordinary paper. For example, there is a much lower level of contaminants that can scratch metal surfaces. Additionally, metal interleaving paper has very small amounts of chlorine and sulfuric acid ions, which can cause metal to rust.





## Lumber & Plywood

In the lumber business, we import lumber, plywood and other wood products, are selling to building material trading companies, building material manufacturers, sales agents, wholesalers, home builders and many other companies. We are supplying to the thriving construction market in the Middle East and other regions by focusing on off-shore trade.

## Wood

To meet domestic housing and construction demand, we import and sell various lumber products from around the world, including North America (U.S., Canada), Europe (Finland, Sweden, Romania, Austria), Russia, and China.

Our extensive network around the globe and bargaining power, backed up by long-standing relationships between our suppliers and customers, enable us to be the frontrunner in the industry.

Especially in Nordic and Russian products, we hold the top market share with a wide range of products that outperform our competitors. In recent years we have developed new markets such as the export of Japanese logs and sales of domestic plywood. In addition, we are expanding our sales in the housing market, ranging from lumber to a wide range of building materials.

### Major products

- Structural material (Solid, Glulam, LVL)  
(Tree species: WW/RW, Western Hemlock/Douglas fir, Japanese cedar, Japanese cypress, etc.)  
Sources: North America, Europe, Russia, Japan
- Non-structural material (Solid, FJ, laminated, LVL)  
(Tree species: WW/RW, Western Hemlock/Douglas fir, Japanese cedar, Japanese cypress, etc.)  
Sources: North America, Europe, Russia, China, Japan
- Domestic coniferous plywood
- Dimension lumber  
(Tree species: SPF, WW, Japanese cedar)  
Sources North America, Europe, Japan
- Laminar and Genban  
(Tree species: WW/RW, Western Hemlock /Douglas fir, etc.)  
Sources: North America, Europe, Russia, China
- Precut products
- Steel ceiling joists
- Plaster boards and insulating material
- Interior and exterior building materials
- Unit reinforcing bar
- CAD drawing





## Highlight 1 Homebuilding Materials Business

We established a new team to focus on end users, namely housing companies in order to further expand our business from upstream lumber materials to downstream processed products. Taking advantage of purchasing raw materials in volume, we can supply products to each construction site in terms of quality, price and delivery.

In addition to wood products, we offer a wide range of products and services, ranging from building materials to drawing CAD diagram. We will create new businesses by finding the various needs of housing companies and utilizing Hanwa's resources including ability to gather information and take prompt action through networks both inside and outside Hanwa group. We are trying to be a partner who can offer solution to our customers.



## Highlight 2 Japan Lumber Products Business

Hanwa started this business in 2006 with exports of logs to India, which was one measure to lower a high level of pollen in the Tokyo area. Since then, operations have grown to cover China, South Korea, Taiwan and Southeast Asia and to include finished products. Furthermore, this business ranks first in Japan in the export volume of forest products.

Within Japan, this business is a source of ideas for plywood&fiber board materials used for homebuilding and other building construction products. Activities continue with the goal of increasing sales of wood materials in Japan by creating new sources of demand. For example, we supply wood for biomass power generation as one way

to prevent the waste of any wood materials. Moreover, we are building a sound infrastructure in order to maintain a reliable supply of Japanese forest products and materials.





## Machinery

The machinery business has two components: amusement facilities, mainly amusement park rides and other facilities; and industrial machinery, mainly steel processing machinery.

## Amusement Equipment

Hanwa is a source of a full line of support in the creation of entertaining spaces. Centered on the sale of amusement park equipment, this business provides assistance ranging from specialized facilities to comprehensive designs. We are the sales agent in Japan for many amusement park equipment manufacturers in Europe and the United States, which have the world's most advanced technologies in this field. Our goal is to use our experience and knowledge to bring the latest trends in amusement and leisure facilities to Japan.

A shift from thrill rides for young people to attractions for families is taking place in the amusement park industry. Assisting clients to benefit from this trend, we have created plans for multi-themed swimming pools. Our many accomplishments in family-oriented facilities have helped greatly increase attendance for our clients.

### Major products

Roller coasters, water rides, merry-go-rounds, attractions for children, role-playing games, water sliders, music fountains, others





# Industrial Machinery

In this business, we sell many types of steel fabrication equipment, including H-beam cutting machines, beveling machines, slitter and leveler processing lines, forming lines and shot blast. Cranes are another part of this business, including crab cranes, hoist cranes and others. Customers are in Japan as well as China, Southeast Asian countries and other countries. In response to rising concerns about the environment, we are increasing sales of water treatment equipment, dust collectors, deodorizers, crushers and other products that help protect the environment.

Another strength of this business is the establishment of a system for creating VE proposals for the efficient machinery required by the capital expenditure plans of Hanwa customers in other business units, especially operations involving steel.



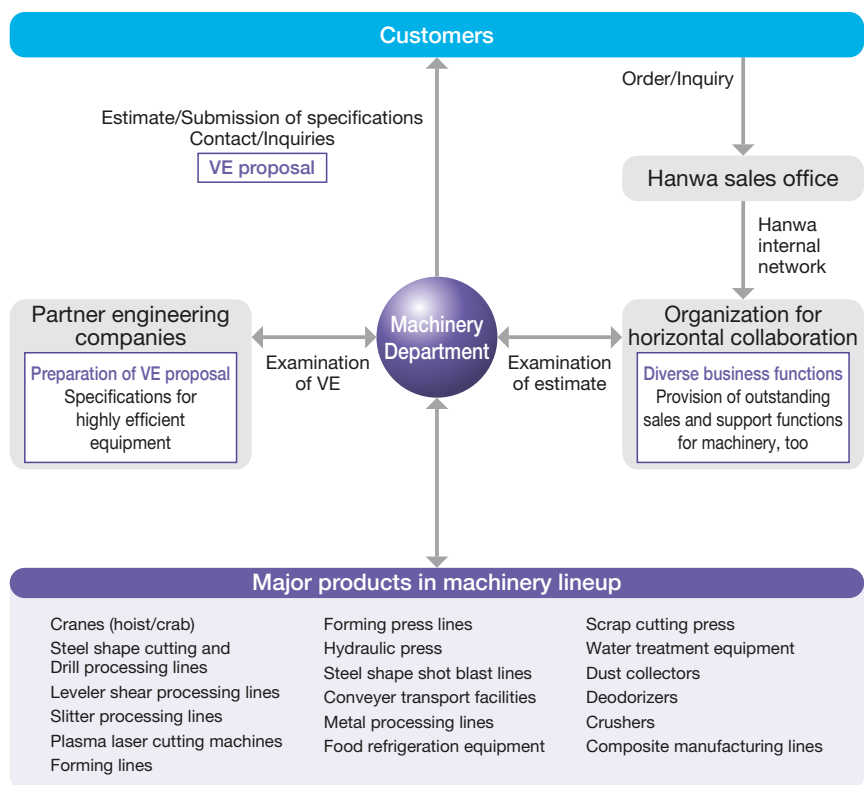
### Major products

Steel shape cutting machines, hole punching machines, shot blast, forming lines, tip processing machines, slitter processing lines, leveler shear processing lines, cranes, beveling machines, dust collectors, deodorizers, water treatment equipment, crushers, others

Hanwa can supply corporate clients with comprehensive assistance for capital investment. Close ties between our industrial machinery business and prominent machinery manufacturers give us an expansive information network and engineering skills. This allows us to devise the best solution for each capital investment plan.

We understand that capital investment are vital to the growth of our corporate clients. Our industrial machinery business can create VE proposals that precisely match the needs of each company. Our proposals cover every aspect of capital investment, providing an “equipment flow” that begins with the transport of materials and extends through manufacturing and processing lines.

We invite companies to contact a Hanwa sales representative. We will send a team of specialists who can determine issues and requirements and help devise solutions.





# Environmental Activity

Hanwa has an environmental management system and is constantly making improvements to this system. All business operations comply with environmental laws and regulations and contribute to the creation of an economy in which resources are recycled. Furthermore, our operations use resources and energy efficiently and protect the environment in many ways. Every business unit establishes targets and other objectives in order to further upgrade environmental performance.

As a “trading company that makes a difference,” we are dedicated to preserving the environment for future generations. We will continue to do everything possible to help establish a framework for sustainable development.

## Environmental Management System

Hanwa establish the Environmental Committee, operating the Environment Management System (EMS).

Officers are appointed by the Environmental Committee and bear the responsibility for maintenance and control of the internal EMS. CSR & Environment Section was established to provide organizational support for the Environmental Committee’s Secretariat and the management officers. Internal environment auditors are selected from among persons who have completed the internal auditor training course conducted by inspection and registration companies, and they carry out audits twice a year. Each department, branch and business location appoints environment responsible officers who promote EMS-related practical work and internal education.

### The Environmental Policy of Hanwa Co., Ltd.

#### Basic Policy

Living by our motto of “Footwork, Teamwork and Network” and our ongoing efforts to improve operations under the principles of Hanwa Knowledge Quality Control (HKQC), Hanwa Co., Ltd. and Hanwa Group companies—in our position as a trading company that has made a name for ourselves through our business activities—will endeavor our utmost to attain sustainable development so that future generations will inherit a fertile global environment.

#### Guidelines for Corporate Action

##### (1) Continuous improvement of the environmental management system.

Hanwa Co., Ltd. will implement and review its environmental objectives and goals based on this environmental policy, and operate and continually improve the environmental management system.

##### (2) Compliance with relevant environmental laws and regulations.

Hanwa Co., Ltd. will comply with relevant environmental international treaties, laws and regulations of Japan and countries concerned, and other agreements and requirements, etc. of the trade industry which Hanwa Co., Ltd. agrees to obey.

##### (3) Contribution to a sustainable recycling system for an economic society.

By actively engaging in the recycling business etc., Hanwa Co., Ltd. will contribute to the realization of a sustainable recycling system for an economic society.

##### (4) The effective use of natural resources and energy.

Hanwa Co., Ltd. will give careful consideration to the preservation of the global environment, and make use of resource and energy effectively.

##### (5) Consideration of natural environment.

In addition to always considering the reduction of adverse environment impacts and making every effort to prevent pollution, Hanwa Co., Ltd. recognizes the critical importance of the conservation and sustainable use of biodiversity and will always take the natural environment into consideration.

##### (6) Promotion of environmental awareness.

Hanwa Co., Ltd. will inform all employees of this policy and actively encourage them to recognize the importance of environmental preservation. This environmental policy will also be made available to the public.

## For Preservation of Biological Diversity

For Earth environment protection and preservation of biological diversity, Hanwa has aggressively obtained world certifications.

### For fishery resources protection, MSC-CoC certification obtained

The fishery industry certified by MSC, which operates the international non-profit organization Marine Stewardship Council, is managed appropriately to enable sustainability. With the system for certifying an environment-friendly fishery industry, certification is made on the following three principles: (1) fishery resources are being maintained at sustainable levels, (2) impact on the ecosystem has been minimized, and (3) the resource management system is functioning effectively. Hanwa has obtained MSC-CoC certification in order to ensure reliable distribution of MSC certified fishery products. "Distribution of fishery products in a sustainable fishery industry" prevents depletion of the world's oceans, maintains the fishing industry for the future, and contributes to protection of fishery products.

### HANWA Received Forest Certifications

For the preservation of forests and responsible use of forest products, Hanwa has received chain-of-custody certification (FSC C018719) in accordance with the certification systems of the Forest Stewardship Council® (FSC®), the Programme for the Endorsement of Forest Certification Schemes (PEFC) and the Sustainable Green Ecosystem Council (SGEC). The SGEC, which is a forest certification solely for Japan, promotes the preservation and sustainable management of forests for the purpose of revitalizing Japan's forestry and lumber industries. Chain-of-custody certification is given to companies with management frameworks that prevent the use of uncertified products during the processing and distribution stages. These certifications demonstrate Hanwa's commitment to supplying environmentally responsible lumber in order to play a role in increasing sustainable forest management practices.

Note: CoC (Chain of Custody) certification attests that in the course of all product manufacturing, processing and distribution, certification is properly managed and that non-certified products are not commingled with certified products, and labels are not falsified.

## ISO14001: 2015 certification

All Hanwa business sites in Japan received ISO14001 certification for their environmental management systems in April 2000 and have renewed ISO14001:2015 successfully in 2016. In accordance with the environmental policy, we are constantly improving these systems while using a variety of business activities with the goal of achieving sustainable growth.

Certification date: April 27, 2000  
Certification agent: Lloyd's Register Quality Assurance Limited (LRQA)  
Certification number: 0066379





# Corporate Citizenship

Hanwa has a strong commitment to corporate citizenship as part of activities to fulfill the company's social obligations. Accordingly, we position corporate social responsibility (CSR) as a key element of all our activities as a company. Hanwa has been conducting a scholarship program for more than 50 years. We are expanding the scope of this program with the goal of fostering the development of people who can play key roles in industry, academia and other sectors of society as globalization progresses in the 21<sup>st</sup> century.

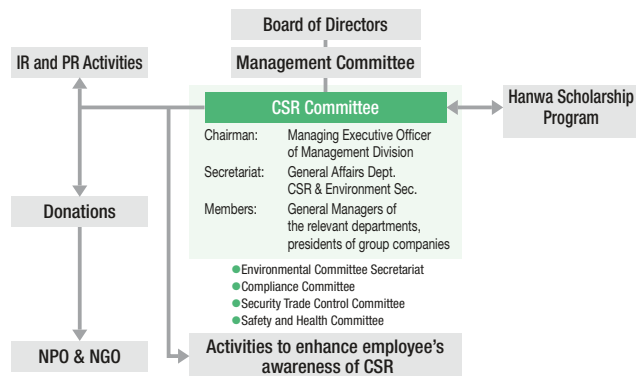
## CSR Activities

### Hanwa's Framework for Promoting CSR

Companies in all industries must deal with major changes in their operating environments. Economic globalization, rising concerns about the environment, and increasing emphasis on human rights worldwide are a few examples of these changes. Hanwa is responding to these events by taking another look at the proper role of a company. We want to be a company with even better communications with stakeholders and the ability to make progress along with society. This is why corporate social responsibility is an integral part of our operations. We are committed to complying with laws and regulations, reflecting environmental issues in our business activities, maintaining highly transparent operations, contributing to society, improving our workplace environments and taking other actions. Our objective is to use these measures for the constant growth in our corporate value.

The Hanwa CSR Committee was established in April 2004 to oversee CSR activities. Since then, we have conducted many programs to fulfill our corporate citizenship obligations. The goals are ensuring compliance with laws and regulations and ethical standards and creating a highly transparent management framework. We have several CSR organizational units, such as the Compliance Committee, Environmental Committee and Hanwa Scholarship Foundation. To perform CSR programs seamlessly, all activities are supervised by the CSR Committee.

### ● The Organization chart of CSR Committee



### Compliance

Hanwa has established a Corporate Ethics Philosophy and Corporate Ethics Guidelines and has a Compliance Committee to oversee compliance programs. The committee has prepared a Compliance Manual that is distributed to all employees. Giving everyone a thorough understanding of the importance of compliance and ensuring compliance with laws, regulations and social guidelines are vital to our ability to fulfill our obligations to society.

In addition, to prevent improper behavior and other incidents, we place emphasis on maintaining a workplace environment that facilitates openness and visualization.



## Hanwa Scholarship Program

### Philosophy of the Hanwa Scholarship Program

The Hanwa Scholarship Foundation was established in 1957 as part of activities to commemorate the 10th anniversary of Hanwa's establishment.

Jiro Kita, the founder of Hanwa, decided to establish the foundation based on the philosophy of "contributing to society based on an awareness of a company's social responsibilities." The foundation began with a contribution of ¥10 million when Hanwa's own capital was ¥100 million.

When the scholarship program began, Japan's economy was starting to improve. But economic restraints still prevented many talented and ambitious students from attending high schools. The foundation was established to provide scholarships to outstanding students with limited economic resources. The objective was to foster the development of individuals who could make significant contributions to progress in Japan.

Jiro Kita believed "People are a treasure for society as a whole rather than merely for individual companies. Helping educate many talented individuals is an endeavor that will have an effect on Japan's future." This spirit remains at the heart of the scholarship program today.

### Looking Ahead to More Achievements

The Hanwa Scholarship Foundation, which became a Public Interest Incorporated Foundation in April 2011, continues to grow steadily, and as of the end of March 2021, it had distributed a total of JPY686.22 million in scholarships, having 84 graduate students, 44 international students, 898 university, junior college, and technical college students, and 151 high school students, for a total of 1,177 recipients. In addition to the existing domestic scholarships based on lending, in fiscal 2015 it launched a benefit-based overseas scholarship program.

As globalization progresses, the foundation hope that as many students as possible will expand their horizons through studying abroad, hone their knowledge, and succeed among talented young people from around the world. Japan has become an economically prosperous country. Beginning in 2021, we are expanding eligibility for our benefit-type scholarships to domestic students, with a goal of creating a comprehensive system that meets the needs of the times.

On the other hand, there has been a rising arguments on the revitalization of education, including a decline in the population due to the declining birthrate, widening economic disparities, degradation of social morals, and a decline in the level of education. Under characteristics as a private scholarship foundation, the Hanwa Scholarship Foundation will further develop its activities, and support the younger students who will lead the next generation to play an active role in society.

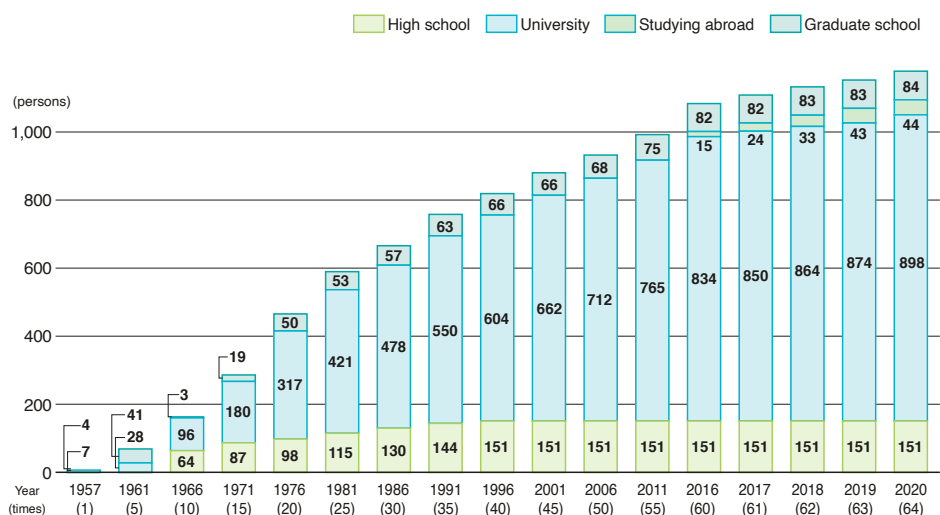


Founder, Hanwa Co., Ltd.  
and Hanwa Scholarship  
Foundation

**Jiro Kita**

北 二郎

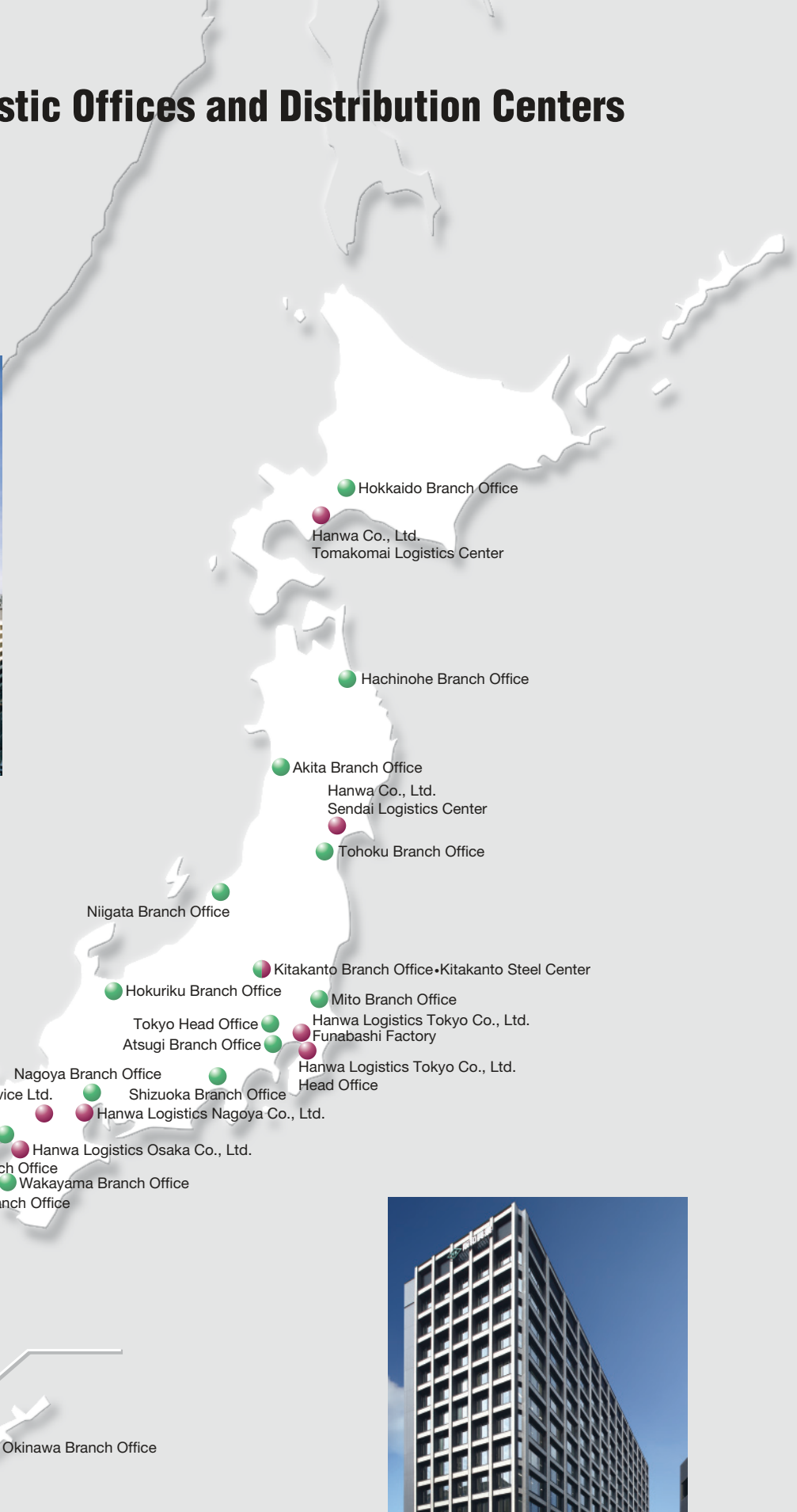
### Accumulated Number of Scholarship Students



# Network of Domestic Offices and Distribution Centers

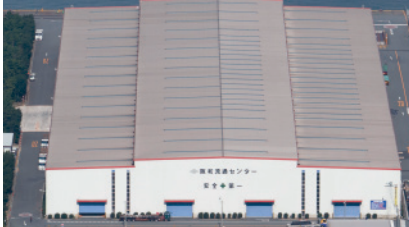


Tokyo Head Office



Osaka Head Office

- Head Office/Branch Office
- Distribution Center/Steel Service/Steel Center



● Hanwa Logistics Tokyo Co., Ltd.

**Head Office**

3-7-2 Akanehama, Narashino, Chiba 275-0024  
 TEL: 047-454-8001 FAX: 047-454-8916  
<http://www.hanwa.co.jp/hrc/tokyo/>  
 Land area: 65,874 m<sup>2</sup>  
 Warehouse capacity: 70,000 tons  
 Fabrication facilities: Leveler processing line,  
 H-beam processing line



**Funabashi Factory**

1-17-1 Hinode, Funabashi, Chiba 273-0015  
 TEL: 047-432-2940 FAX: 047-432-2942  
 Land area: 30,780 m<sup>2</sup>  
 Warehouse capacity: 4,094 KL  
 Facilities: Fuel oil tank/supply station



● Hanwa Logistics Osaka Co., Ltd.

1-65 Chikkoyawata-machi, Sakai-ku, Sakai,  
 Osaka 590-0901  
 TEL: 072-225-2720 FAX: 072-225-2727  
<http://www.hanwa.co.jp/hrc/osaka/>  
 Land area: 92,357 m<sup>2</sup>  
 Warehouse capacity: 140,000 tons  
 Fabrication facilities: Leveler processing line with  
 Automatic packaging line, H-beam processing  
 line, Column processing line (cutting•beveling)



● Hanwa Logistics Nagoya Co., Ltd.

13 Kaneoka, Tobishima-mura, Ama-gun,  
 Aichi 490-1445  
 TEL: 0567-55-2691 FAX: 0567-55-2664  
<http://www.hanwa.co.jp/hrc/nagoya/>  
 Land area: 74,340 m<sup>2</sup>  
 Warehouse capacity: 100,000 tons  
 Fabrication facilities: Leveler processing line,  
 H-beam processing line, Column processing  
 line (cutting•beveling), and Aluminum scrap  
 shredder



● Hanwa Steel Service Ltd.

Minakuchi-Second-Techno-park,  
 32-2 Hinokigaoka, Minakuchi-cho, Kouga,  
 Shiga 528-0068  
 TEL: 0748-63-8211 FAX: 0748-63-8260  
<http://www.hanwa.co.jp/hss/>  
 Land area: 23,347 m<sup>2</sup>  
 Warehouse capacity: 18,000 tons  
 Fabrication facilities: Slitter processing line  
 2 lines, Minileveler line 1 line, and Blanking  
 press line 2 lines



● Hanwa Co., Ltd.  
**Tomakomai Logistics Center**

20-2 Harumi-cho Tomakomai, Hokkaido 059-1374  
 TEL: 0144-52-1015 FAX: 0144-57-6402  
 Land area: 18,868 m<sup>2</sup>  
 Warehouse capacity: 10,000 tons



● Hanwa Co., Ltd.  
**Sendai Logistics Center**

2-3 Matsuzakadaira, Taiwa-cho, Kurokawa-gun,  
 Miyagi 981-3408  
 TEL: 022-347-1675 FAX: 022-347-1676  
 Land area: 19,227 m<sup>2</sup>  
 Warehouse capacity: 8,000 tons  
 Fabrication facilities: H-beam cutting line,  
 Shot-blast line



● Hanwa Co., Ltd.  
**Kyushu Logistics Center**

293-3 Koga, Tsukushino-city, Fukuoka 818-0047  
 TEL: 092-918-7350 FAX: 092-918-7351  
 Land area: 48,916 m<sup>2</sup>  
 Warehouse capacity: 20,000 tons



● Hanwa Co., Ltd.  
**Kitakanto Steel Center**

1059-3, Tanaka-machi, Isesaki, Gunma 372-0814  
 TEL: 0270-27-4523 FAX: 0270-27-4550  
 Land area: 26,769 m<sup>2</sup>



# Domestic Affiliated Companies

## Steel

### Hanwa Eco Steel Corporation



4F, Shinkamagaya F Tower,  
2-8-17, Shinkamagaya,  
Kamagaya,  
Chiba 273-0107  
TEL: +81-47-404-8514  
FAX: +81-47-404-8547

### S.K. Engineering Co., Ltd.



16F, Ginza Shochiku  
Square Bldg.,  
1-13-1 Tsukiji, Chuo-ku,  
Tokyo 104-8429  
TEL: +81-3-3544-5101  
FAX: +81-3-3544-8711

### Tohan Steel Co., Ltd.



1-17-1, Hinode, Funabashi,  
Chiba 273-0015  
TEL: +81-47-431-8201  
FAX: +81-47-431-8205

### Daikoh Owano Co., Ltd.



8-1-41, Nanko-higashi,  
Suminoe-ku,  
Osaka 559-0031  
TEL: +81-6-6612-5781  
FAX: +81-6-6612-3882

### Mie Kogyo Co., Ltd.



6381-1, Karasu-cho, Tsu,  
Mie 514-0315  
TEL: +81-59-292-2811  
FAX: +81-59-292-3055

### Subaru Steel Co., Ltd.



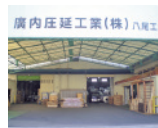
11F, Kintetsushinnanba Bldg.,  
1-4-38, Minatomachi,  
Naniwa-ku, Osaka 556-0017  
TEL: +81-6-6635-2330  
FAX: +81-6-6635-2340

### Kaneki Co.,Ltd.



17-2, Gionden, Ichida,  
Kumiyama-cho, Kuse-gun,  
Kyoto 613-0022  
TEL: +81-774-43-5425  
FAX: +81-774-44-1927

### Hirouchi Atsuen Kogyo Co., Ltd.



4-8-16, Shigino-Nishi,  
Jyoto-ku, Osaka 536-0014  
TEL: +81-6-6963-2201  
FAX: +81-6-6963-2207

### San Ei Metal Co., Ltd.



6F, HK Yodoyabashi Garden  
Avenue Bldg., 4-3-9,  
Fushimi-machi, Chuo-ku,  
Osaka 541-0044  
TEL: +81-6-4707-0301  
FAX: +81-6-4707-2810

### Hokuriku Column Co., Ltd.



2-33-5, Ariiso, Imizu,  
Toyama 933-0251  
TEL: +81-766-86-1171  
FAX: +81-766-86-2005

### Fukuoka Kogyo Co.,Ltd.



2-88-1, Shouwa-machi,  
Tsuyama,  
Okayama 708-0886  
TEL: +81-868-23-2171  
FAX: +81-868-23-2184

### Taiyokozai Co.,Ltd.



4F, HK Yodoyabashi Garden  
Avenue Bldg., 4-3-9,  
Fushimi-machi, Chuo-ku,  
Osaka 541-0044  
TEL: +81-6-6221-0220  
FAX: +81-6-6221-0221

### Matsuoka Kozai Co., Ltd



76-1, Konan-cho Nojiri,  
Koka, Shiga 520-3307  
TEL: +81-748-86-3003  
FAX: +81-748-86-6535

### Daiko Sangyo Co., Ltd.



8F, VPO Hon-machi Central,  
4-4-7, Kitakyuhouji-machi,  
Chuo-ku, Osaka 541-0057  
TEL: +81-6-6121-9171  
FAX: +81-6-6121-9176

### Daisun Co., Ltd.



4-5-7, Itachibori, Nishi-ku,  
Osaka 550-0012  
TEL: +81-6-6543-7722  
FAX: +81-6-6543-2400

### Metaltech Co., Ltd.



4-29-9, Midori, Sumida-ku,  
Tokyo 130-0021  
TEL: +81-3-3633-8541  
FAX: +81-3-3632-5530

### MS HIYOSHI KOZAI Co., Ltd.



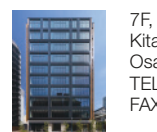
4-5-33, Kitamura, Imabari,  
Ehime 799-1502  
TEL: +81-898-35-5803  
FAX: +81-898-35-5804

### STAINLESS PIPE KOGYO Co., Ltd.



4-16-8, Mokuzai-dori,  
Mihara-ku, Sakai,  
Osaka 587-0042  
TEL: +81-72-361-2882  
FAX: +81-72-361-2886

### IZUMO TEC Co., Ltd.



7F, VPO Hon-machi Central, 4-4-7,  
Kitakyuhouji-machi, Chuo-ku,  
Osaka 541-0057  
TEL: +81-6-6243-1068  
FAX: +81-6-6243-1138

### KAMEI Co., Ltd.



3-20-14, Takewara,  
Matsuyama,  
Ehime 790-0053  
TEL: +81-89-945-8181  
FAX: +81-89-945-8189

### SANYO KOUZAI Co., LTD.



2-1-13, Minami Yoshijima,  
Naka-ku, Hiroshima,  
Hiroshima 730-0826  
TEL: +81-82-243-0288  
FAX: +81-82-243-0455

### Ohmi Sangyo Co., Ltd.



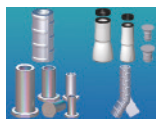
4-13-13, Tsuru-machi,  
Taisho-ku, Osaka 551-0023  
TEL: +81-6-4394-3500  
FAX: +81-6-4394-3700

### WING Co., Ltd.



1059-5, Tanaka-machi,  
Isesaki, Gunma 372-0814  
TEL: +81-270-61-5175  
FAX: +81-270-61-5172

**Japanlife Co., Ltd.**



13F, Ginza Shochiku Square 1-13-1, Tsukiji, Chuo-ku, Tokyo 104-0045  
TEL: +81-3-6260-6301  
FAX: +81-3-6260-6307

**Sodensha Co., Ltd.**



18-1, Amida, Furukawa Kamizone, Osaki, Miyagi 989-6264  
TEL: +81-229-27-2165  
FAX: +81-229-27-2166

**Tatsuta Kogyo Co., Ltd.**



6-5-4, Takami-cho, Yao, Osaka 581-0017  
TEL: +81-72-997-0255  
FAX: +81-72-997-6111

**Tekken Industry Company**



2-10-2 Takase, Maruoka-cho, Sakai, Fukui 910-0355  
TEL: +81-776-66-8215  
FAX: +81-776-66-8251

**BiC Co., Ltd.**



13F, Ginza Shochiku Square 1-13-1, Tsukiji, Chuo-ku, Tokyo 104-0045  
TEL: +81-3-6260-6365  
FAX: +81-3-6260-6374

**Metal Recycling**

**Showa Metal Co., Ltd.**



6-26, HigashiOhgishima, Kawasaki-ku, Kawasaki, Kanagawa 210-0869  
TEL: +81-44-277-1431  
FAX: +81-44-277-1432

**Hanwa Metals Co., Ltd.**



SBS Logicom Nangang Logistics Center 1F, 2-5-8, Nanko-minami, Suminoe-ku, Osaka 559-0032  
TEL: +81-6-4703-4172  
FAX: +81-6-4703-4174

**SEIKI Co.,LTD.**



1-20, Nakata, Fuki, Taketoyo-cho, Chita-gun, Aichi 470-2531  
TEL: +81-569-72-7551  
FAX: +81-569-72-7552

**Nikko Kinzoku Co.,Ltd.**



1071, Tanoura, Moji-ku, Kitakyusyu, Fukuoka 801-0803  
TEL: +81-93-332-0731  
FAX: +81-93-332-0739

**Maruhon Honma Suisan CO.,Ltd**



5-4-7, Hachikengojyohigashi, Nishi-ku, Sapporo, Hokkaido 063-0865  
TEL: +81-11-756-3011  
FAX: +81-11-756-3065

**East Japan Foods Co., Ltd.**



4-3-30, Kaduma-Minami, Ishinomaki, Miyagi 986-0042  
TEL: +81-225-94-8377  
FAX: +81-225-94-8371

**Energy/Life Living Materials**

**Others**

**Toyo Energy Co., Ltd.**



6F, HK Yodoyabashi Garden Avenue Bldg., 4-3-9, Fushimi-machi, Chuo-ku, Osaka 541-0044  
TEL: +81-6-6201-0681  
FAX: +81-6-6201-0688

**Halos Corporation**



4F, Hanwa Bekkan NO2, Bldg., 1-7-3, Shintomi, Chuo-ku, Tokyo 104-0041  
TEL: +81-3-3552-2698  
FAX: +81-3-3552-2350

**Seibu Service Co., Ltd.**



17, Sumiyoshihama-machi, Higashinada-ku, Kobe, Hyogo 658-0042  
TEL: +81-78-857-3818  
FAX: +81-78-857-4141

**Hanwa Alpha Business Co., Ltd.**



1-13-1, Tsukiji, Chuo-ku, Tokyo 104-8429  
TEL: +81-3-3544-2401  
FAX: +81-3-3544-2395

**Alpha Forme Co., Ltd.**



17, Sumiyoshihama-machi, Higashinada-ku, Kobe, Hyogo 658-0042  
TEL: +81-78-857-3818  
FAX: +81-78-857-4141

**Food**

**Hanwa Foods Co., Ltd.**



1-7-4, Shintomi, Chuo-ku, Tokyo 104-0041  
TEL: +81-3-6228-3401  
FAX: +81-3-3553-0177

# Network of Overseas Offices

## South East and South Asia

### Overseas Offices

**1 YANGON / MYANMAR**  
HANWA CO., LTD. MYANMAR REPRESENTATIVE OFFICE  
Steel/Others

**2 MANILA / PHILIPPINES**  
HANWA CO., LTD. MANILA REPRESENTATIVE OFFICE  
Steel/Others

### Subsidiaries

**3 SINGAPORE / SINGAPORE**  
HANWA SINGAPORE (PTE) LTD.  
Steel/Petroleum/Non-ferrous metals/Chemicals/ Others

**4 KUALA LUMPUR / MALAYSIA**  
HANWA (MALAYSIA) SDN.BHD.  
Steel/Non-ferrous metals/Food/Others

**5 PENANG / MALAYSIA**  
HANWA STEEL CENTRE (M) SDN. BHD.  
Processing and sale of hot-rolled steel sheets, cold-rolled sheets, galvanized steel sheets, stainless steel sheets and others (COIL CENTER)

**6 BANGKOK / THAILAND**  
HANWA THAILAND CO., LTD.  
Steel/Metals and alloys/Non-ferrous metals/ Food/Others

**7 CHONBURI / THAILAND**  
HANWA STEEL SERVICE (THAILAND) CO., LTD.  
Shearing for thin strips, galvanized steel sheets and other products and sale of processed steel products (COIL CENTER)

**8 HO CHI MINH CITY / VIETNAM**  
HANWA VIETNAM CO., LTD.  
Steel/Food/Chemicals/Non-ferrous metals/ Others

**9 HANOI / VIETNAM**  
HANWA VIETNAM CO., LTD. HANOI BRANCH  
Steel/Food/Chemicals/Paper/ Non-ferrous metals/Others

**10 HANOI / VIETNAM**  
HANWA SMC STEEL SERVICE HA NOI CO., LTD.  
Processing and sale of cold-rolled sheets, hot-rolled steel sheets, galvanized steel sheets, pre-coated colored steel sheets and others (COIL CENTER)

**11 JAKARTA / INDONESIA**  
PT. HANWA INDONESIA  
Steel/Food/Lumber/Non-ferrous metals/Others

**12 JAKARTA / INDONESIA**  
PT. HANWA STEEL SERVICE INDONESIA  
Processing and sale of hot-rolled steel sheets, cold-rolled sheets, electrolytical galvanized steel sheets and others (COIL CENTER)

**13 SURABAYA / INDONESIA**  
PT. HANWA ROYAL METALS  
Recycling of non-ferrous metals

**14 MUMBAI / INDIA**  
HANWA INDIA PRIVATE LTD. HEAD OFFICE  
Steel/Metals and alloys/Petroleum/Lumber/ Others

**15 NEW DELHI / INDIA**  
HANWA INDIA PRIVATE LTD. NEW DELHI OFFICE  
Steel/Metals and alloys/Petroleum/Lumber/Others

**16 CHENNAI / INDIA**  
HANWA INDIA PRIVATE LTD. CHENNAI OFFICE  
Steel/Metals and alloys/Petroleum/Lumber/Others

### Other Affiliates

**17 CHONBURI / THAILAND**  
PCM PROCESSING (THAILAND) LTD.  
Cutting and processing of high-grade pre-coated colored steel sheets (PCM coil) (COIL CENTER)

**18 RAYONG / THAILAND**  
FURUKAWA UNIC (THAILAND) CO., LTD.  
Manufacture and sale of components for mobile cranes

**19 BATANGAS / PHILIPPINES**  
SOHBI KOHGEI (PHILS.), INC.  
Manufacture and sale of precision stamped components for computers and other office equipment, home appliance, automobiles and other products

**20 BANGKOK / THAILAND**  
SIAM HANWA CO., LTD.  
Metal die diffusion hardening surface processing service

**21 BANGKOK / THAILAND**  
HANWA FELLOWS ENGINEERING (THAILAND) CO., LTD.  
Production of fabrication diagrams for steel frames and processed steel components, supervision of fabrication and types of custom-made steel components

**22 BINH DUONG / VIETNAM**  
NST SAIGON COIL CENTER CO., LTD.  
Processing and sale of cold-rolled sheets, galvanized steel sheets, silicon steel sheets, and others (COIL CENTER)



## East Asia

### Subsidiaries

#### 1 SEOUL / KOREA

HANWA (KOREA) CO., LTD.  
Steel/Metals and alloys/  
Non-ferrous metals/Petroleum/Chemicals/Others

#### 2 BUSAN / KOREA

HANWA (KOREA) CO., LTD. BUSAN OFFICE  
Steel/Metals and alloys/Non-ferrous metals/Others

#### 3 DALIAN / CHINA

HANWA (DALIAN) CO., LTD.  
Steel/Metals and alloys/Lumber/Food/Others

#### 4 QINGDAO / CHINA

HANWA (QINGDAO) CO., LTD.  
Steel/Food/Lumber/Others

#### 5 SHANGHAI / CHINA

HANWA TRADING (SHANGHAI) CO., LTD.  
Steel/Metals and alloys/Food/Chemicals/Others

#### 6 SHANGHAI / CHINA

RI HONG STAINLESS (SHANGHAI) CO., LTD.  
Processing and sale of stainless steel strips and  
other steel materials (COIL CENTER)

#### 7 WUHAN / CHINA

HANWA TRADING (SHANGHAI) CO., LTD. WUHAN BRANCH  
Steel/Metals and alloys/Food/Chemicals/Others

#### 8 FUZHOU / CHINA

HANWA TRADING (SHANGHAI) CO., LTD. FUZHOU BRANCH  
Steel/Metals and alloys/Food/Chemicals/Others

#### 9 CHONGQING / CHINA

HANWA TRADING (SHANGHAI) CO., LTD. CHONGQING BRANCH  
Steel/Metals and alloys/Food/Chemicals/Others

#### 10 TIANJIN / CHINA

HANWA TRADING (SHANGHAI) CO., LTD.  
TIANJIN BRANCH  
Steel/Petroleum/Metals and alloys/  
Non-ferrous metals/Others

#### 11 HONG KONG / CHINA

HANWA CO., (HONG KONG) LTD.  
Steel/Non-ferrous metals/Food/Others

#### 12 GUANGZHOU / CHINA

GUANGZHOU HANWA TRADING CO., LTD.  
Steel/Metals and alloys/Food/Others

#### 13 ZHONGSHAN / CHINA

GUANGZHOU HANWA TRADING CO., LTD. ZHONGSHAN BRANCH  
Steel/Non-ferrous metals/Food/Others

#### 14 TAIPEI / TAIWAN

TAIWAN HANWA KOGYO CO., LTD.  
Steel/Metals and alloys/Petroleum/Chemicals/  
Others

#### 15 KAOHSIUNG / TAIWAN

TAIWAN HANWA KOGYO CO., LTD. KAOHSIUNG OFFICE  
Steel/Non-ferrous metals/Metals and alloys/  
Others

#### 16 DONGGUAN / CHINA

HANWA STEEL SERVICE (DONGGUAN) CO., LTD.  
Processing and sale of cold-rolled sheets,  
coated steel sheets, stainless steel products  
(COIL CENTER)

#### 17 TAICANG / CHINA

CHANG FU STAINLESS STEEL CENTER (SUZHOU) CO., LTD.  
Processing and sale of stainless steels, cold-  
rolled sheets, coated steel sheets products (COIL  
CENTER)

### Other Affiliates

#### 18 DONGGUAN / CHINA

DONGGUAN TETSUWA METALS CO., LTD.  
Shearing for cold-rolled sheets, galvanized steel  
sheets, silicon steel sheets, stainless steel  
sheets, steel sheets and other materials and sale  
of these products (COIL CENTER)

#### 19 SHENZHEN / CHINA

SHENZHEN NS STEEL CENTRE CO., LTD.  
Shearing for steel sheets, galvanized steel sheets  
and other products and sale of processed steel  
products (COIL CENTER)

#### 20 NINGBO / CHINA

NINGBO BAOXIN STAINLESS STEEL CO., LTD.  
Manufacture and sale of stainless steel cold-  
rolled sheets (manufacturer of stainless steel  
cold-rolled sheets)

#### 21 WUHAN / CHINA

WUHAN FUBOHE AUTO PARTS CO., LTD.  
Heat set processing of automotive seat leather,  
surface leather cutting, sale and export of  
surface leather, sale and export of cut products

#### 22 SHANGHAI / CHINA

HANWA FELLOWS ENGINEERING (CHINA) CO., LTD.  
Production of fabrication diagrams for steel  
frames and processed steel components,  
supervision of fabrication and types of cus-  
tom-made steel components



## North, South and Central America

### Subsidiaries

**1 NEW YORK / U.S.A.**  
 HANWA AMERICAN CORP.  
 HEAD OFFICE  
 Steel/Food/Petroleum/Others

**2 SEATTLE / U.S.A.**  
 HANWA AMERICAN CORP.  
 SEATTLE BRANCH  
 Food

**3 SEATTLE / U.S.A.**  
 SEATTLE SHRIMP & SEAFOOD COMPANY, INC.  
 Sale of frozen shrimp and seafood

**4 LOS ANGELES / U.S.A.**  
 HANWA AMERICAN CORP.  
 LOS ANGELES BRANCH  
 Steel/Metals and alloys

**5 BOGOTA / COLOMBIA**  
 HANWA AMERICAN CORP.  
 COLOMBIA BRANCH  
 Steel

**6 SAN DIEGO / U.S.A.**  
 SAN DIEGO VISTA STEEL SERVICE CORP.  
 Shearing for thin strips, galvanized steel sheets  
 and other products and sale of processed steel  
 products (COIL CENTER)

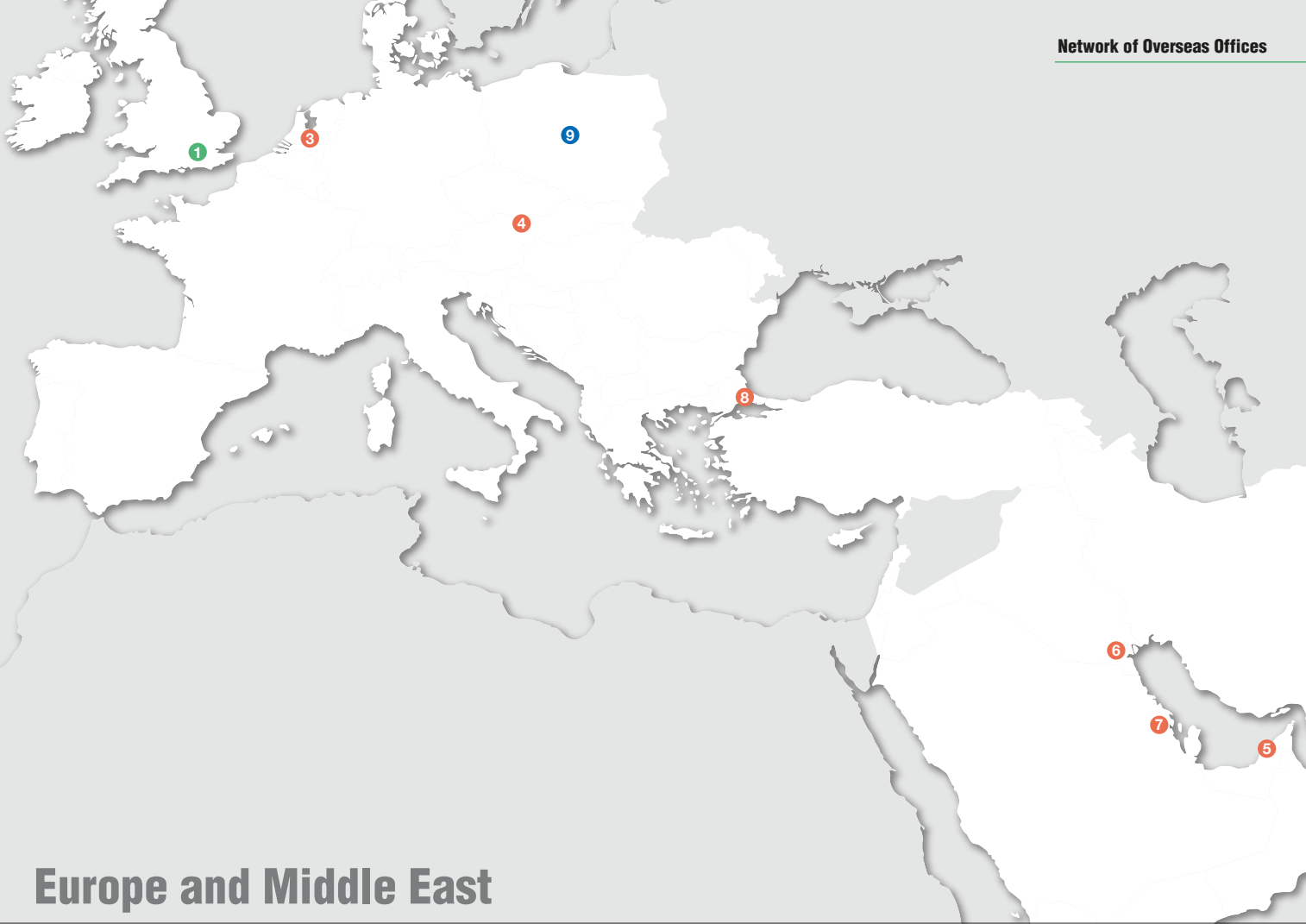
**7 VANCOUVER / CANADA**  
 HANWA CANADA CORP.  
 Lumber/Steel

**8 TRONTO / CANADA**  
 HANWA CANADA CORP.  
 TRONTO BRANCH  
 Food

**9 MEXICO CITY / MEXICO**  
 HANWA MEXICANA, S.A. DE C.V.  
 Steel

**10 CELAYA / MEXICO**  
 HANWA STEEL SERVICE MEXICANA, S.A. DE C.V.  
 Processing and sale of hot-rolled steel sheets,  
 cold-rolled sheets, galvanized steel sheets,  
 stainless steel sheets and others (COIL CENTER)

**11 SANTIAGO / CHILE**  
 HANWA CHILE LTDA.  
 Food/Steel/Non-ferrous metals/Lumber



## Europe and Middle East

### Overseas Offices

**1 LONDON / UNITED KINGDOM**

HANWA CO., LTD. LONDON BRANCH  
Steel/Non-ferrous metals/Metals and alloys/  
Petroleum/Others

**2 JOHANNESBURG /  
REPUBLIC OF SOUTH AFRICA**

HANWA CO., LTD. JOHANNESBURG BRANCH  
Metals and alloys/Others

### Subsidiaries

**3 AMSTERDAM / NETHERLANDS**

HANWA EUROPE B.V.  
Steel/Non-ferrous metals/Foods/Others

**4 VIENNA / AUSTRIA**

HANWA EUROPE B.V. VIENNA BRANCH  
Lumber/Others

**5 DUBAI / U.A.E.**

HANWA MIDDLE EAST FZE  
Steel/Lumber/Others

**6 KUWAIT / KUWAIT**

HANWA MIDDLE EAST FZE, KUWAIT OFFICE  
Steel/Lumber/Others

**7 DAMMAM / SAUDI ARABIA**

HANWA MIDDLE EAST FZE, DAMMAM OFFICE  
Steel/Lumber/Others

**8 ISTANBUL / TURKEY**

HANWA TURKEY IMPORT EXPORT &  
TRADING LLC  
Steel

### Other Affiliate

**9 TORUN / POLAND**

SOHBI CRAFT POLAND Sp. z o.o.  
Manufacture and sale of precision stamped com-  
ponents for office equipment, home appliances  
and other products





# Contact with Overseas Bases

## South East and South Asia

### Overseas Offices

**HANWA CO., LTD. MYANMAR REPRESENTATIVE OFFICE**  
UNIT 7&9, 11TH FLOOR, HAGL MYANMAR CENTRE TOWER 1, 192,  
KABA AYE PAGODA ROAD, BAHAN TOWNSHIP, YANGON, MYANMAR  
TEL•FAX: +95-1-9345-379

**HANWA CO., LTD. MANILA REPRESENTATIVE OFFICE**  
14TH FLOOR, 6788 AYALA AVENUE, OLEDAN SQUARE,  
1226 MAKATI CITY, METRO MANILA, PHILIPPINES  
TEL: +63-2-8817-5624 FAX: +63-2-8817-5956

### Subsidiaries

**HANWA SINGAPORE (PRIVATE) LTD.**  
1 RAFFLES PLACE, #11-61 ONE RAFFLES PLACE TOWER 2,  
048616, SINGAPORE  
TEL: +65-6536-7822 FAX: +65-6536-7855

**HANWA (MALAYSIA) SDN. BHD.**  
LOT 19-5, LEVEL 19, MENARA HAP SENG 2, NO.1,  
JALAN P.RAMLEE, 50250 KUALA LUMPUR, MALAYSIA  
TEL: +60-3-2022-2308 FAX: +60-3-2022-2164

**HANWA THAILAND CO., LTD.**  
24TH FLOOR, UNIT 2401-2402, Q.HOUSE LUMPINI BUILDING,  
1 SOUTH SATHORN ROAD, TUNGMAHAMEK, SATHORN,  
BANGKOK 10120, THAILAND  
TEL: +66-2-343-8877 FAX: +66-2-343-8878

**HANWA VIETNAM CO., LTD.**  
UNIT 4-1, 19TH FLOOR, A&B TOWER, 76 LE LAI STREET,  
DISTRICT 1, HO CHI MINH CITY, VIETNAM  
TEL: +84-28-3822-5715 FAX: +84-28-3822-5725

**HANWA VIETNAM CO., LTD. HANOI BRANCH**  
UNIT9-12, 9TH FLOOR, TNR TOWER, 54A NGUYEN CHI THANH,  
DONG DA DISTRICT, HANOI, VIETNAM  
TEL: +84-24-7300-9155 FAX: +84-24-7300-9159

**PT. HANWA INDONESIA**  
MIDPLAZA 1 BUILDING, 9TH FLOOR, JL. JEND.  
SUDIRMAN KAV. 10-11, JAKARTA 10220, INDONESIA  
TEL: +62-21-5785-3033 FAX: +62-21-5785-3045

**HANWA INDIA PRIVATE LTD. HEAD OFFICE**  
KANAKIA WALL STREET OFFICE NO 908, 9TH FLOOR B-WING,  
ANDHERI KUALA ROAD, CHAKALA, ANDHERI (EAST),  
MUMBAI 400 093, INDIA  
TEL: +91-22-4019-1300

**HANWA INDIA PRIVATE LTD. NEW DELHI OFFICE**  
UNIT NO.301, TIME TOWER BUILDING, MG ROAD, SECTOR 28,  
GURUGRAM, HARYANA 122 002, INDIA  
TEL: +91-124-456-6100 FAX: +91-124-456-6111

**HANWA INDIA PRIVATE LTD. CHENNAI OFFICE**  
5H-1/5K/5K-1, 5TH FLOOR, CENTURY PLAZA, 560-562,  
ANNA SALAI, TEYNAMPET, CHENNAI 600 018, INDIA  
TEL: +91-44-33539100 FAX: +91-44-33539104

## East Asia

### Subsidiaries

**HANWA (KOREA) CO., LTD.**  
ROOM 3205, KOREA WORLD TRADE TOWER, SAMSEONG-DONG, 511,  
YEONGDONG-DAERO, GANGNAM-GU, SEOUL 06164, R.O.KOREA  
TEL: +82-2-551-5387 FAX: +82-2-551-5575

**HANWA (KOREA) CO., LTD. BUSAN OFFICE**  
ROOM 504, INDUSTRY BUILDING, 37,  
GWAEGAM-RO, SASANG-GU, BUSAN 46977, R.O.KOREA  
TEL: +82-51-319-1006 FAX: +82-51-319-1545

**HANWA (DALIAN) CO., LTD.**  
SENMAO BUILDING, 12F, 147 ZHONGSHAN STREET, DALIAN CITY,  
LIAONING 116011, P.R.CHINA  
TEL: +86-411-8-368-6954 FAX: +86-411-8-368-6934

**HANWA (QINGDAO) CO., LTD.**  
UNIT 1006-7, SHANGRI-LA CENTRE OFFICE, NO.9 HONG KONG  
MIDDLE ROAD, QINGDAO CITY, SHANDONG 266071, P.R.CHINA  
TEL: +86-532-8-577-9990 FAX: +86-532-8-577-9630

**HANWA TRADING (SHANGHAI) CO., LTD.**  
16F, SMEG PLAZA, 1386 HONG QIAO ROAD, CHANG NING  
DISTRICT, SHANGHAI 200336, P.R.CHINA  
TEL: +86-21-6237-5260 FAX: +86-21-6237-5282

**HANWA TRADING (SHANGHAI) CO., LTD. WUHAN BRANCH**  
ROOM 2106, K11 ATELIER, NO.626 JIEFANG Avenue,  
QIAOKOU DISTRICT, WUHAN CITY, HUBEI 430032, P.R.CHINA  
TEL: +86-27-8549-7132 FAX: +86-27-8578-7196

**HANWA TRADING (SHANGHAI) CO., LTD. FUZHOU BRANCH**  
ROOM 1204, SHENGLONG FINANCIAL CENTER, NO.1 GUANGMING  
ROAD, FUZHOU CITY, FUJIAN 350009, P.R.CHINA  
TEL: +86-591-8-3354165 FAX: +86-591-8-3345202

**HANWA TRADING (SHANGHAI) CO., LTD. CHONGQING BRANCH**  
ROOM 1711, METROPOLITAN TOWER, 68 ZHOU RONG LU,  
CENTRAL DISTRICT, CHONGQING 400010, P.R.CHINA  
TEL: +86-23-6381-1101 FAX: +86-23-6381-7385

**HANWA TRADING (SHANGHAI) CO., LTD. TIANJIN BRANCH**  
UNIT 1803 18/F., METROPOLITAN TOWER, 183 NANJING ROAD  
HEPING DISTRICT, TIANJIN 300051 P.R.CHINA  
TEL: +86-22-6566-8618 FAX: +86-22-6566-8619

**HANWA CO., (HONG KONG) LTD.**  
SUITE 1504, 15/F., 12 TAIKOO WAN ROAD,  
TAIKOO SHING ISLAND EAST, HONG KONG.  
TEL: +852-2545-0110 FAX: +852-2542-2544

**GUANGZHOU HANWA TRADING CO., LTD.**  
UNIT 3701-3704, PROFIT PLAZA, NO.76 WESTHUANGPU ROAD,  
GUANGZHOU CITY, GUANGDONG 510623, P.R.CHINA  
TEL: +86-20-8732-0451 FAX: +86-20-8732-0402

**GUANGZHOU HANWA TRADING CO., LTD. ZHONGSHAN BRANCH**  
UNIT 10, 28TH FLOOR, LIHE INTERNATIONAL FINANCIAL CENTER,  
NO.16-3 ZHONGSHAN 3RD ROAD, ZHONGSHAN CITY,  
GUANGDONG 528403, P.R.CHINA  
TEL: +86-760-2332-0706 FAX: +86-760-2332-0696

**TAIWAN HANWA KOGYO CO., LTD.**  
RM.5, 7F., NO.57, FUXING N RD., SONGSHAN DIST., TAIPEI 10595,  
TAIWAN  
TEL: +886-2-2721-3229 FAX: +886-2-2721-3226

**TAIWAN HANWA KOGYO CO., LTD. KAOHSIUNG OFFICE**  
ROOM B, 17TH FLOOR, NO.7 SU-WEI 4TH ROAD, KAOHSIUNG,  
TAIWAN  
TEL: +886-7-338-5508 FAX: +886-7-338-5433

## Americas

### Subsidiaries

#### **HANWA AMERICAN CORP. HEAD OFFICE**

PARKER PLAZA, 12TH FLOOR, 400 KELBY STREET, FORT LEE,  
NJ 07024, U.S.A.  
TEL: +1-201-363-4500 FAX: +1-201-346-9890

#### **HANWA AMERICAN CORP. SEATTLE BRANCH**

14205 SE 36TH STREET, SUITE 214, BELLEVUE, WA 98006, U.S.A.  
TEL: +1-206-622-2102 FAX: +1-206-622-6464

#### **SEATTLE SHRIMP & SEAFOOD COMPANY, INC.**

14205 SE 36TH STREET, SUITE 214, BELLEVUE, WA 98006, U.S.A.  
TEL: +1-206-812-2841 FAX: +1-206-812-2840

#### **HANWA AMERICAN CORP. LOS ANGELES BRANCH**

18300 VON KARMAN, SUITE 450, IRVINE, CA 92612, U.S.A.  
TEL: +1-949-955-2780 FAX: +1-949-955-2785

#### **HANWA AMERICAN CORP. COLOMBIA BRANCH**

CARRERA 15 NO.93A-84, EDIFICIO BUSINESS 93, OFICINA 209,  
BOGOTA D.C., COLOMBIA  
TEL: +57-1-7047651 FAX: +57-1-7047710

#### **HANWA CANADA CORP. HEAD OFFICE**

SUITE #1601-1166 ALBERNI STREET, VANCOUVER,  
B.C. V6E 3Z3, CANADA  
TEL: +1-604-876-1175 FAX: +1-604-876-1085

#### **HANWA CANADA CORP. TRONTO BRANCH**

UNIT 208, 4789 YONGE ST., TRONTO, ONTARIO M2N 0G3,  
CANADA  
TEL: +1-647-417-9701 FAX: +1-647-417-9705

#### **HANWA MEXICANA, S.A. DE C.V.**

PASEO DE LA REFORMA 255 PISO 11-A COL. CUAUHTEMOC,  
CUAUHTEMOC, CIUDAD DE MEXICO, CP 06500, MEXICO  
TEL: +52-55-5525-9934 FAX: +52-55-5533-2774

#### **HANWA CHILE LIMITADA**

APOQUINDO 5583, OFICINA 92, LAS CONDES, SANTIAGO,  
REPUBLIC OF CHILE  
TEL: +56-2-2247-5125 FAX: +56-2-2954-1803

#### **HANWA GUAM CORP.**

428, CHALAN ANTONIO SUITE, 102, TAMUNING, 96913, GUAM  
TEL: +1-671-647-0133 FAX: +1-671-647-0135

## Europe, Middle East and Africa

### Overseas Offices

#### **HANWA CO., LTD. LONDON BRANCH**

7TH FLOOR, 55 STRAND, LONDON, WC2N 5LS, U.K.  
TEL: +44-20-7839-4448 FAX: +44-20-7839-3994

#### **HANWA CO., LTD. JOHANNESBURG BRANCH**

2ND FLOOR, WEST TOWER, NELSON MANDELA SQUARE,  
MAUDE STREET, SANDTON, JOHANNESBURG, 2196, SOUTH AFRICA  
TEL: +27-11-881-5966 FAX: +27-11-881-5611

### Subsidiaries

#### **HANWA EUROPE B.V.**

WTC TOWER-A, LEVEL3, STRAWINSKYLAAN 305, 1077XX,  
AMSTERDAM, THE NETHERLANDS  
TEL: +31-20575-2460 FAX: +31-20575-2461

#### **HANWA EUROPE B.V. VIENNA BRANCH**

WIPPLINGERSTRASSE 34 TOP 174, 1010 WIEN, AUSTRIA  
TEL: +43-1-532-0165 FAX: +43-1-532-016520

#### **HANWA MIDDLE EAST FZE**

DUBAI AIRPORT FREE ZONE, EAST WING, BLDG NO.6E,  
OFFICE NO.549, P.O.BOX 293873, DUBAI, U.A.E.  
TEL: +971-4-701-7565 FAX: +971-4-701-7560

#### **HANWA MIDDLE EAST FZE, KUWAIT OFFICE**

1ST FLOOR, OFFICE NO.5, SAWABER 6, KHALEED BIN WALEED ST.,  
BLOCK NO.6, PLOT NO.6, SHARQ, P.O.BOX 1114, DASMAN,  
15462, KUWAIT  
TEL: +965-2-243-7259 FAX: +965-2-243-7263

#### **HANWA MIDDLE EAST FZE, DAMMAM OFFICE**

TEL: +966-13-842-0845 FAX: +966-13-842-0847

#### **HANWA TURKEY IMPORT EXPORT & TRADING LLC**

ACIBADEM MAH, CECEN SK, AKASYA A KULE KENT ETABI  
BLOK NO:25A IC KAPI NO:191 USKUDAR, ISTANBUL, TURKEY  
TEL: +90-216-771-9314 FAX: +90-216-771-9315

# Overseas Processing Plants

## CHANG FU STAINLESS STEEL CENTER (SUZHOU) CO., LTD.



NO.7 GUANZHOU EAST ROAD, ECONOMIC DEVELOPMENT AREA, TAICANG CITY, JIANGSU, P.R.CHINA 215400  
TEL: +86-512-5359-0800  
FAX: +86-512-5358-8942

## RI HONG STAINLESS STEEL (SHANGHAI) CO., LTD.



NO.118, LIUHUA ROAD, PUTUO DISTRICT, SHANGHAI, 200331 P.R.CHINA  
TEL: +86-21-6627-6588  
FAX: +86-21-6627-8277

## HANWA STEEL SERVICE (DONGGUAN) CO., LTD.



NO. 42 WEIJIAN ROAD, CHASHAN TOWN, DONGGUAN CITY, GUANGDONG 523391, P.R.CHINA  
TEL: +86-769-8182-1000  
FAX: +86-769-8182-1001

## DONGGUAN TETSUWA METALS CO., LTD.



LONGXI INDUSTRIAL AREA, ZHOUXI NANCHENG DISTRICT, DONGGUAN CITY, GUANGDONG 523077, P.R.CHINA  
TEL: +86-769-2240-1299  
FAX: +86-769-2240-1099

## HANWA STEEL CENTRE (M) SDN. BHD.



PLOT 33, JALAN PERUSAHAAN BUKIT MINYAK, BUKIT MINYAK INDUSTRIAL PARK, 14000 BUKIT MERTAJAM, PENANG, MALAYSIA  
TEL: +60-4-507-0033  
FAX: +60-4-507-0055

## HANWA STEEL SERVICE (THAILAND) CO., LTD.



700/625 MOO 4, 700/630 MOO 5, TAMBOL BAANKAO, AMPHUR PANTHONG, CHONBURI 20160, THAILAND  
TEL: +66-38-21-0200  
FAX: +66-38-21-0085

## PCM PROCESSING (THAILAND) LTD.



AMATANAKORN INDUSTRIAL ESTATE, 700/411 (SOI KHOMAI 11) MOO 1, BAANGAO, PHARNTHONG, CHONBURI 20160, THAILAND  
TEL: +66-38-454-381 FAX: +66-38-454-386

## HANWA SMC STEEL SERVICE HA NOI CO., LTD.



LOT 47, QUANG MINH INDUSTRIAL ZONE, QUANG MINH TOWN, ME LINH DISTRICT, HA NOI, VIETNAM  
TEL: +84-24-3525-1522 FAX: +84-24-3525-1526

## PT. HANWA STEEL SERVICE INDONESIA



MM2100 INDUSTRIAL TOWN, BLOCK QQ-5, WEST CIKARANG, BEKASI 17520, INDONESIA  
TEL: +62-21-8998-1791  
FAX: +62-21-8998-1794

## SAN DIEGO VISTA STEEL SERVICE CORPORATION



8753 KERNS STREET, SAN DIEGO, CA 92154, U.S.A.  
TEL: +1-619-671-9247  
FAX: +1-619-671-9210

## HANWA STEEL SERVICE MEXICANA, S.A. DE C.V.



AUTOPISTA QUERETARO-IRAPUATO, KM 35+500, AV. CELAYA NO.105, PARQUE INDUSTRIAL AMISTAD BAJIO, C.P. 38160, APASEO EL GRANDE, GUANAJUATO, MEXICO  
TEL: +52-413-158-6600 FAX: +52-413-158-6601

## NST SAIGON COIL CENTER CO., LTD.



NO.3 STREET8, VIETNAM SINGAPORE INDUSTRIAL PARK, THUAN AN DISTRICT, BINH DUONG PROVINCE, S.R.VIETNAM  
TEL: +84-274-3784460 FAX: +84-274-3784465

## SOHBI CRAFT POLAND Sp. z o.o.



OSTASZEWO 57H, 87-148, LYSOMICE, POLAND  
TEL: +48-56-621-2711  
FAX: +48-56-621-2734

## SOHBI KOHGEI (PHILS.), INC.



SPECIAL ECONOMIC ZONE, LIMA TECHNOLOGY CENTER, LIPA CITY, BATANGAS, PHILIPPINES  
TEL: +63-43-981-3830  
FAX: +63-43-981-3829

## FURUKAWA UNIC (THAILAND) CO., LTD.



109/11 MOO 4, TAMBOL PLUAKDAENG AMPHUR PLUAKDAENG, RAYONG 21140, THAILAND  
TEL: +66-38-955-074  
FAX: +66-38-955-079



# Company Profile

<b>Corporate Name:</b>	Hanwa Co., Ltd.
<b>President:</b>	Hironari Furukawa
<b>Date Established:</b>	April 1, 1947
<b>Paid-in Capital:</b>	¥45.7 billion
<b>Number of Employees: (consolidated)</b>	4,845
<b>Line of Business:</b>	Domestic and Import-Export business in: Steel Products, Steelmaking Raw Materials, Construction Materials, Metals, Scraps, Recycling Materials, Industrial Machinery, Amusement Facilities, Energy, Life Living Materials, Food Products, Lumber, Machinery and Others
<b>Offices:</b>	Osaka Head Office, Tokyo Head Office, Nagoya Branch Office, Kyushu Branch Office, Hokkaido Branch Office, Tohoku Branch Office, Kitakanto Branch Office, Niigata Branch Office, Chugoku Branch Office, Hachinohe Branch Office, Akita Branch Office, Mito Branch Office, Atsugi Branch Office, Shizuoka Branch Office, Hokuriku Branch Office, Wakayama Branch Office, Okayama Branch Office, Fukuyama Branch Office, Shikoku Branch Office, Okinawa Branch Office
<b>Overseas Offices:</b>	(North, South and Central America) New York, Seattle, Los Angeles, San Diego, Vancouver, Tronto, Guam, Mexico City, Celaya, Bogota, Santiago (Asia) Seoul, Busan, Tianjin, Qingdao, Dalian, Shanghai, Taicang, Chongqing, Wuhan, Fuzhou, Guangzhou, Dongguan, Zhongshan, Hong Kong, Taipei, Kaohsiung, Bangkok, Chonburi, Yangon, Hanoi, Ho Chi Minh City, Kuala Lumpur, Penang Singapore, Jakarta, Manila, Mumbai, New Delhi, Chennai (Europe, Middle East & Africa) London, Wien, Amsterdam, Kuwait, Dammam, Dubai, Johannesburg, Istanbul
<b>Distribution Centers:</b>	Hanwa Logistics Tokyo Co., Ltd. (Head Office, Funabashi Factory) Hanwa Logistics Osaka Co., Ltd. / Hanwa Logistics Nagoya Co., Ltd. Hanwa Co., Ltd. Tomakomai Logistic Center, Hanwa Co., Ltd. Sendai Logistic Center, Hanwa Co., Ltd. Kyushu Logistic Center, Kitakanto Steel Center
<b>Stock Exchange Listings:</b>	The first Section of the Tokyo Stock Exchange
<b>Bank References:</b>	Sumitomo Mitsui Banking Corporation Mizuho Corporate Bank, Ltd. The Bank of Tokyo-Mitsubishi UFJ, Ltd. The Sumitomo Trust and Banking Co., Ltd. The Mitsubishi UFJ Trust and Banking Corporation Resona Bank, Limited
<b>URL:</b>	<a href="http://www.hanwa.co.jp/">http://www.hanwa.co.jp/</a>

## ● Osaka Head Office

4-3-9, Fushimi-machi, Chuo-ku,  
Osaka 541-8585, Japan  
TEL: +81-6-7525-5000  
FAX: +81-6-7525-5365

## ● Tokyo Head Office

1-13-1, Tsukiji, Chuo-ku, Tokyo 104-8429,  
Japan  
TEL: +81-3-3544-2171  
FAX: +81-3-3544-2351

## ● Nagoya Branch Office

JP TOWER NAGOYA 35F, 1-1-1, Meieki,  
Nakamura-ku, Nagoya,  
Aichi 450-6335, Japan  
TEL: +81-52-977-3600  
FAX: +81-52-977-3630

## ● Kyushu Branch Office

Taihaku Center Bldg., 2-19-24, Hakata-ekimae,  
Hakata-ku, Fukuoka 812-0011, Japan  
TEL: +81-92-471-7121  
FAX: +81-92-471-7060

## ● Hokkaido Branch Office

MetLife Sapporo Kitasanjo Bldg., 3-1-25,  
Kita-sanjo Nishi, Chuo-ku, Sapporo,  
Hokkaido 060-0003, Japan  
TEL: +81-11-219-7375  
FAX: +81-11-219-7376

## ● Tohoku Branch Office

Sendai Dai-ichi Seimei Tower Bldg., 4-6-1,  
Ichiban-cho, Aoba-ku, Sendai,  
Miyagi 980-0811, Japan  
TEL: +81-22-227-7981  
FAX: +81-22-227-7969

## ● Kitakanto Branch Office

1059-3, Tanaka-machi, Iseasaki,  
Gunma 372-0814, Japan  
TEL: +81-270-27-4510  
FAX: +81-270-27-4550

## ● Niigata Branch Office

Hokuetsu-daiichi Bldg., 1-2-25,  
Higashi Odouri, Chuo-ku,  
Niigata 950-0087, Japan  
TEL: +81-25-255-1777  
FAX: +81-25-255-1776

## ● Chugoku Branch Office

Hiroshima-fukuromachi Bldg., 5-25,  
Fukuro-machi, Naka-ku,  
Hiroshima 730-0036, Japan  
TEL: +81-82-543-2570  
FAX: +81-82-543-2561

## ● Hachinohe Branch Office

Kyoei Hachinohe Bancho Bldg., 9-5, Bancho,  
Hachinohe, Aomori 031-0031, Japan  
TEL: +81-178-73-1170  
FAX: +81-178-22-2211

## ● Akita Branch Office

Akita Square Bldg., 4-1-2, Nakadori, Akita,  
Akita 010-0001, Japan  
TEL: +81-18-838-1995  
FAX: +81-18-838-1996

## ● Mito Branch Office

Okaba Mito Sannomaru Bldg., 1-3-35,  
Minami-machi, Mito, Ibaraki 310-0021, Japan  
TEL: +81-29-300-0351  
FAX: +81-29-226-8230

## ● Atsugi Branch Office

Nihonseimei Hon-Atsugi Bldg., 1-2-1,  
Asahi-cho, Atsugi, Kanagawa 243-0014, Japan  
TEL: +81-46-226-9005  
FAX: +81-46-227-0121

## ● Shizuoka Branch Office

Mizunomori Bldg., 14-1, Minami-cho,  
Suruga-ku, Shizuoka 422-8067, Japan  
TEL: +81-54-654-7080  
FAX: +81-54-654-7082

## ● Hokuriku Branch Office

Urban Place, 18-7, Ushijima-cho, Toyama,  
Toyama 930-0858, Japan  
TEL: +81-76-432-6313  
FAX: +81-76-432-6317

## ● Wakayama Branch Office

Nankai Wakayamashieki Bldg., 3-17,  
Higashikuramaecho, Wakayama,  
Wakayama 640-8203, Japan  
TEL: +81-73-428-7230  
FAX: +81-73-428-7231

## ● Okayama Branch Office

KURASHIKI ARK SQUARE, 2-4-6, Showa,  
Kurashiki, Okayama 710-0057, Japan  
TEL: +81-86-435-7122  
FAX: +81-86-422-5622

## ● Fukuyama Branch Office

Meiji-Yasuda Seimei Fukuyama-ekimae  
Bldg., 1-25, Nobehiro-cho, Fukuyama,  
Hiroshima 720-0064, Japan  
TEL: +81-84-973-5701  
FAX: +81-84-924-8707

## ● Shikoku Branch Office

NISSAY Takamatsu Bldg. 7F, 1-1-5, Ban-cho,  
Takamatsu, Kagawa 760-0017, Japan  
TEL: +81-87-811-2750  
FAX: +81-87-811-2753

## ● Okinawa Branch Office

Kokuba Bldg., 3-21-1, Kumojo, Naha,  
Okinawa 900-0015, Japan  
TEL: +81-98-860-9115  
FAX: +81-98-861-5516

# Company History

April 1947	Company established
December 1948	Tokyo Branch Office opened
November 1952	Nagoya Branch Office opened
April 1957	Tenth Anniversary of founding (established Hanwa Scholarship Foundation)
January 1961	Funabashi Distribution Center opened
October	Becomes designated wholesale trader for Sumitomo Metal Industries, Ltd.
April 1963	Becomes designated wholesale trader for Fuji Steel Works (now Nippon Steel Corporation)
March 1964	Hong Kong Office opened
July 1965	New York Office opened
August 1968	Becomes designated wholesale trader for Kawasaki Steel Corporation
August	Listed in the First Section of the Tokyo Stock Exchange and Osaka Securities Exchanges
February 1974	Nagoya Distribution Center opened
January 1975	London Office opened
November	Nanko Distribution Center opened
April 1976	Hanwa Health Insurance Society established
April 1977	Hanwa welfare pension funds initiated
November 1988	Keiyo Distribution Center opened
August 1994	Vancouver Office opened
April 1995	Tohoku and Kyushu Branch Offices opened
January 1998	Used internal funds to repurchase and retire 100 million shares of stock
May	Sendai Factory opened
August 1999	Used tender offer to purchase and retire 80 million shares of stock
October 2000	Started E-commerce "hanwa-steel.com" in steel business
April 2002	Hanwa Steel Service Co., Ltd. established
June 2004	Hanwa Steel Service (Thailand) Co., Ltd. established
September 2005	Hanwa Steel Service (Dongguan) Co., Ltd. established
April 2006	Hokkaido Branch Office opened
February 2007	Niigata Branch Office opened
February	Hiroshima Branch Office (now Chugoku Branch Office) opened
April 2008	Hanwa India Private Ltd. established
June	Hanwa Europe B.V. established
September	PT. Hanwa Steel Service Indonesia established
May 2009	Hanwa Co., Ltd. Tomakomai Logistics Center established
October 2009	Kitakanto Branch Office opened
March 2010	Tokyo Head Office moved
April	Okinawa Branch Office opened
September	Osaka-Nanko Branch Office opened
April 2011	Mito Branch Office, Atsugi Branch Office, Tohoku Branch Hachinohe Office opened
October	Shizuoka Branch Office opened HANWA (DALIAN) CO., LTD. established
December	HANWA (QINGDAO) CO., LTD., HANWA VIETNAM CO., LTD. established
February 2012	HANWA (BEIJING) CO., LTD. established
April	Okayama Branch Office opened Kyushu Logistics Center opened
November	Hanwa Mexicana, S.A. DE C.V. established
February 2013	P.T. Hanwa Royal Metals established Hanwa Thailand Co., Ltd. Myanmar Branch established
February 2014	HANWA CHILE LIMITADA established
July	Hokuriku Branch Office opened
March 2015	Fukuyama Branch Office opened
March 2016	Wakayama Branch Office opened
June	Hanwa Co., Ltd. Manila Representative Office established
June 2017	Kitakanto Steel Center opened in Kitakanto Branch Office
May 2018	HANWA STEEL CENTRE (M) SDN. BHD. acquired as subsidiary
October	Shikoku Branch Office opened
August 2019	HANWA SMC STEEL SERVICE HANOI CO., LTD. acquired as subsidiary
April 2021	Akita Branch Office Opened
November	Hanwa Canada Corp. Tronto Branch established



## HANWA CO., LTD.

<b>Osaka Head Office:</b>	4-3-9, Fushimi-machi, Chuo-ku, Osaka 541-8585, Japan TEL: +81-6-7525-5000 FAX: +81-6-7525-5365
<b>Tokyo Head Office:</b>	1-13-1, Tsukiji, Chuo-ku, Tokyo 104-8429, Japan TEL: +81-3-3544-2171 FAX: +81-3-3544-2351
<b>Nagoya Branch Office:</b>	JP TOWER NAGOYA 35F, 1-1-1, Meieki, Nakamura-ku, Nagoya, Aichi 450-6335, Japan TEL: +81-52-977-3600 FAX: +81-52-977-3630
<b>Kyushu Branch Office:</b>	Taihaku Center Bldg., 2-19-24, Hakata-ekimae, Hakata-ku, Fukuoka 812-0011, Japan TEL: +81-92-471-7121 FAX: +81-92-471-7060
<b>Hokkaido Branch Office:</b>	MetLife Sapporo Kitasanjo Bldg., 3-1-25, Kita-sanjo Nishi, Chuo-ku, Sapporo, Hokkaido 060-0003, Japan TEL: +81-11-219-7375 FAX: +81-11-219-7376
<b>Tohoku Branch Office:</b>	Sendai Dai-ichi Seimei Tower Bldg., 4-6-1, Ichiban-cho, Aoba-ku, Sendai, Miyagi 980-0811, Japan TEL: +81-22-227-7981 FAX: +81-22-227-7969
<b>Kitakanto Branch Office:</b>	1059-3, Tanaka-machi, Isesaki, Gunma 372-0814, Japan TEL: +81-270-27-4510 FAX: +81-270-27-4550
<b>Niigata Branch Office:</b>	Hokuetsu-daiichi Bldg., 1-2-25, Higashi Oodouri, Chuo-ku, Niigata 950-0087, Japan TEL: +81-25-255-1777 FAX: +81-25-255-1776
<b>Chugoku Branch Office:</b>	Hiroshima-fukuromachi Bldg., 5-25, Fukuro-machi, Naka-ku, Hiroshima 730-0036, Japan TEL: +81-82-543-2570 FAX: +81-82-543-2561
<b>Hachinohe Branch Office:</b>	Kyoei Hachinohe Bancho Bldg., 9-5, Bancho, Hachinohe, Aomori 031-0031, Japan TEL: +81-178-73-1170 FAX: +81-178-22-2211
<b>Akita Branch Office:</b>	Akita Square Bldg., 4-1-2, Nakadori, Akita, Akita 010-0001, Japan TEL: +81-18-838-1995 FAX: +81-18-838-1996
<b>Mito Branch Office:</b>	Okaba Mito Sannomaru Bldg., 1-3-35, Minami-machi, Mito, Ibaraki 310-0021, Japan TEL: +81-29-300-0351 FAX: +81-29-226-8230
<b>Atsugi Branch Office:</b>	Nihonseimei Hon-Atsugi Bldg., 1-2-1, Asahi-cho, Atsugi, Kanagawa 243-0014, Japan TEL: +81-46-226-9005 FAX: +81-46-277-0121
<b>Shizuoka Branch Office:</b>	Mizunomori Bldg., 14-1, Minami-cho, Suruga-ku, Shizuoka 422-8067, Japan TEL: +81-54-654-7080 FAX: +81-54-654-7082
<b>Hokuriku Branch Office:</b>	Urban Place, 18-7, Ushijima-cho, Toyama, Toyama 930-0858, Japan TEL: +81-76-432-6313 FAX: +81-76-432-6317
<b>Wakayama Branch Office:</b>	Nankai Wakayamashieki Bldg., 3-17, Higashikuramaecho, Wakayama, Wakayama 640-8203, Japan TEL: +81-73-428-7230 FAX: +81-73-428-7231
<b>Okayama Branch Office:</b>	KURASHIKI ARK SQUARE, 2-4-6, Showa, Kurashiki, Okayama 710-0057, Japan TEL: +81-86-435-7122 FAX: +81-86-422-5622
<b>Fukuyama Branch Office:</b>	Meiji-Yasuda Seimei Fukuyama-ekimae Bldg., 1-25, Nobehiro-cho, Fukuyama, Hiroshima 720-0064, Japan TEL: +81-84-973-5701 FAX: +81-84-924-8707
<b>Shikoku Branch Office</b>	NISSAY Takamatsu Bldg. 7F, 1-1-5, Ban-cho, Takamatsu, Kagawa 760-0017, Japan TEL: +81-87-811-2750 FAX: +81-87-811-2753
<b>Okinawa Branch Office:</b>	Kokuba Bldg., 3-21-1, Kumoji, Naha, Okinawa 900-0015, Japan TEL: +81-98-860-9115 FAX: +81-98-861-5516

